

Aylsham Local History Society



The Lychgate
Aylsham Churchyard

AYLSHAM LOCAL HISTORY SOCIETY

CHAIRMAN

Canon J. Vyse
Tel: Aylsham 732128

SECRETARY

Mrs. J. Nolan
Tel: Aylsham 732226

EDITOR

T. Mollard, Flint Cottage, Calthorpe Rd. Erpingham
Tel: Cromer 761638

ANNUAL SUBSCRIPTION

Annual subscriptions (still only £2) became due from the date of our AGM. Payments should be made to our Hon. Treasurer: Alan Quinn, 65 Burgh Rd. Aylsham.

One problem expressed by some members is that it is not always easy to know who fellow members of the Society are. In the next issue of the Journal there will appear a complete list of paid-up members to make life easier. It will help if subscriptions are paid promptly to make the list as complete as possible.

AYLSHAM LOCAL HISTORY SOCIETY

JOURNAL & NEWSLETTER

Volume 1

Number 5

MARKET PLACE SHOPS

Ron Peabody

The interesting information given by Robin Rush about Aylsham's clock and watchmakers in last June's issue of our Journal prompts me to provide some details of Aylsham's traders also. My research was necessary as I wished to date some photographs in the Parish Archives collection, which were taken by Edmund Juba and show different views of the Market Place.

Checking through the directories I discovered that he is listed in Kelly's for 1875 - JUBA, Edmd, Hungate St. photographer - . To confirm this date I then checked the entries for the shopkeepers shown in the photographs, and also the publican whose name appears above the entrance to the Black Boys Inn.

The latter was - GARNER, Henry. Black Boys commercial hotel and posting house; also a billiard room and bowling green, and Inland Revenue office. He was landlord from 1865 until about 1875. The list of the Black Boys landlords I have been able to compile from directories is:-

1793	Richard Harriman
1836-1839	Charles Tattam
1845-1854	James Spanton
1856-1864	James Breese
1865-1875	Henry Garner
1877-1904	Christmas Stapleton

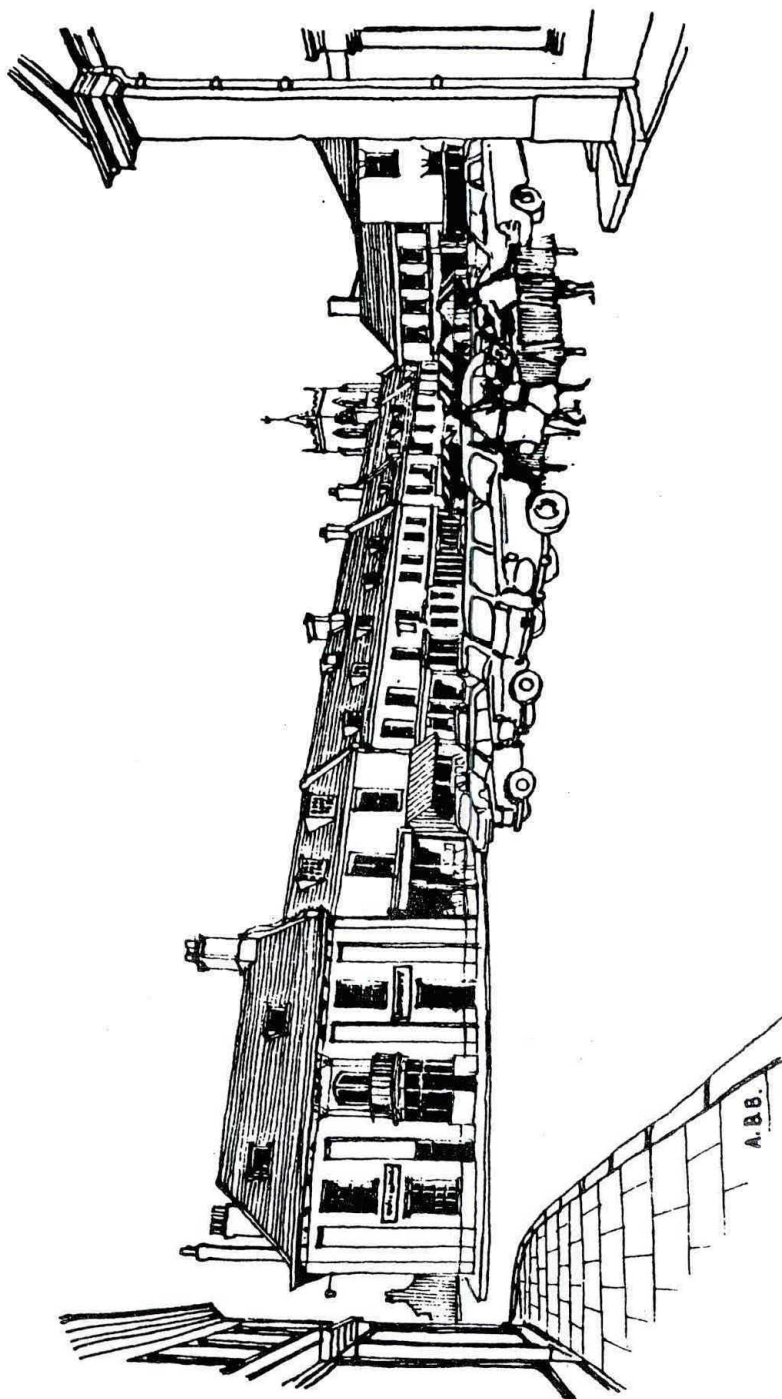
1908	William Pashley
1912	Ernest Pashley
1916	Lewis James Cope
1922	Edward Garrett
1923	Lewis James Cope
1924-1927	Mrs. Garrett
1928-c1930	Capt. R. Beard
1937-(post war)	Mrs Alice Emma Gathercole
(post war)	Helen & Frank Clark

The shop at present occupied by Barnwells is featured in one photograph as a printing and stationery business which has been carried on there for 150 years. In 1875 it was owned by - CLEMENTS Charles, printer bookseller, stationer, newsagent, fancy repository & stamp distributor [later he was agent for the Weir and other sewing machines] and he had traded there from about 1836. Charles H. Barnwell took over about 1900.

The shop now occupied by G.A. Key, Auctioneer and Estate agent was, in 1875, owned by WHITTAKER, Last Samuel, jeweller, watch and clock-maker. He traded there from about 1875 until 1900 and was also at some time an optician and agent for Sellar's sewing machines.

In 1935 our Post Office was built. To provide the site meant demolishing an ironmonger's shop which stood closer to the Black Boys corner(!) than does the Post Office [you can see how the kerb in Hungate Street has been set back]. In 1875 the Juba photograph shows it was owned by James Cornish. The full list of ironmongers trading there would include:-

1850 - 1853	Freeman & Austen
1854 - 1864	Baker Steddy Austen (father of the donor of the Soame Memorial pump)
1865 -c1879	James Cornish
c1883 -c1892	Frederick Love
c1896 -c1902	William Bond



A.B.B.

c1904 - 1922 Robert Samuel Last
c1925 Mrs. B.Last.

Two other shopkeepers are shown in the photographs, both of them in business in the Market Place for a number of years. They are: William Page and Charles Harvey Ward.

The shop now occupied by Budgen Supermarkets and next door, was, from 1858-1875, owned by William PAGE, grocer and linen draper. (He had a shop in Red Lion St. prior to this from 1850 until 1856). In 1877 it traded as Page & Son, and then from 1879 until sometime in the 1940s it was owned by Henry Page (also listed as the North Norfolk Supply Stores from 1937).

Charles Harvey WARD, grocer and draper, occupied and traded at "London House" which stood at the end of the Town Hall. He traded there from about 1869 until 1891 (known as Ward & Son in 1890) and had to move when "London House" was pulled down to make way for the extension to the Town Hall, erected in 1892 (now used as the kitchen, toilets and offices above). He then took over the premises previously owned by another grocer - Wm.D.MEERS. Today the premises are occupied by the Trustee Savings Bank. From 1892 until 1908 it continued as Ward & Son, and then traded as Ward & George until about 1937, another shop (now Key's) being added to the business also.

George Probert CLARKE was an ironmonger in the Market Place from 1883 until about 1925; after that I'm told that the premises became the china department of Messrs Henry Page, and now, once again it is an ironmongery business owned by the Clarke family.

The chemist's shop in the Market Place is another long established business, and it is interesting to see that the trade sign above the shop front [an apothecary's still] is shown in Juba's photograph, which means, of course, that it has been there for

over a hundred years. The list of chemists trading there is:-

1836-1839	Thomas Connold
1845-1856	John Symonds
1863-1869	George H. Clarke
1875-1883	Edward Robt. George
1888-1904	Octavius Corder
1907-1917	Joseph Dester Dester
1922	Dester & Co.
1923	Reeve/H. Dester
1924-1930	Walter Reeve
1932-1933	J. Staton
1937	David Paterson Latham.

These dates are approximate. If any of our members can correct, or add to these, or any of the other notes (particularly the more recent ones) I shall be pleased to hear from them.

ULPH FAMILY NEWS

At least two issues of the above newsletter have already appeared. This is a unique and ambitious attempt to list and track down all known details of families bearing the name ULPH. There are 335 known ULPHS alive around the world - 295 of them living in England. The name appears in the early Aylsham directories, and there are 27 listed in the current Norwich telephone directory. Are there any Aylsham ULPHS today? if so contact:-

Colin Ulph
281 Upper Shoreham Rd.
Shoreham by sea
West Sussex BN4 6BB

a grand family get-together is planned for April 1987 at Burnham Market.

AYLSHAM BRIDEWELL

The Bridewell at Aylsham was a feature of life in the town for a considerable time. It lasted for 282 years from the time it was built in 1543 by Robert Marsham until it finally closed down in 1825 when the County gaol in Norwich was opened. Robert Marsham was one of the first churchwardens, and the house of correction that he built is described by Dr.Sapwell as "- situated in the angle between Burgh Rd and Red Lion St., at what was formerly known as Bridewell corner".

There could never be any doubt about who founded the house. It is recorded that on the front of the keeper's house the following venerable inscription was cut or carved in wood

GOD SAVE OURE SUPREM HED KYNG
HENRY THE EYGHTE. PRAY FOR THE GOOD PROSPEREYTE
AND ASSTATE OF ROBERT MERSHAM AND JANE, HIS WYFE, THE
WICHE THIS HOWSE THEY CAUSED TO BE MADE, TO THE HONOR
OF THE TOWNE BE THEIR QWYCK LYFE. FINES.

This howse was made in the yer of our Lorde 1543

RM

IB

Dr.Sapwell, adding more detail, records that the inscription was carved on a wooden wall-plate, at first floor level, in a continuous line 38 feet long. Although the original intentions of the founder were that it would serve as a house of correction for vagabonds and prostitutes, like all other Bridewells it degenerated into an ordinary lock-up or prison for common felons.

This state of affairs continued until the early nineteenth century, when the movement started by the great prison reformers gained strength, and it is through the investigations into the state of the nation's prisons, and their reports, that we learn more of the conditions in Aylsham Bridewell. John Howard records that in April 1779 there were four prisoners in custody, and

"in the floor of the work (or day) room is a trap door into a dungeon which is $9\frac{1}{2}$ feet by 6. Above stairs are three rooms, not secure. No fireplace, no straw, court not secure, prisoners in it only on Sundays, no water no sewer, no implements for work, no allowance but two pennyworth of bread a day to vagrants. Keeper's salary £13-6-8."

The original house was re-built in 1787. It was not a very good restoration, but conditions in the prison certainly were improved. A report in 1812 describes the current state of affairs -

"at the back of the keeper's house is a courtyard 60ft. square, with a pump in it and two sewers. The prisoners have one hour in the morning to wash and clean themselves, which the rules require them to do before they receive their bread, and likewise half an hour in the evening for the same purpose. Soap and towels are allowed them by the County, a clean shirt every week, and clean sheets once a month.

On the ground floor are five cells which open into a well ventilated lobby, 40 ft. long and four feet wide, at the end of which is the Chapel, 18ft. by 10 and 8ft.6ins. high, with a fire-place.

Above stairs are five other cells, and an infirmary over the chapel and of the same size which opens into a lobby of the like dimensions. Each cell is 12ft.by 7

and 8ft.6inches high with arched roofs and fitted up with a crib bedstead, straw-in-sacking bed, one sheet, two blankets and a rug. In each door is a wicket or pot-hole of six inches by four.

There are also four cells adjoining to the keeper's wash-house, for the women, and these have glazed windows.

Yellow and brown striped clothing is provided for the prisoners by the County. Hemp blocks were heretofore used, but as there is no hemp supplied, a mill is now substituted for the grinding of corn, etc. The prison is whitewashed once a year"

Prisoners, of whom there were 14 in September 1805 and 9 in September 1810 were allowed sixpence a day in money, or in bread, pease and potatoes. We know that in 1794 the keeper of the Bridewell was Vincent Smith, but at the time of the above report the keeper was William Howes. His salary had just risen from £40 to £55 per annum, and in addition he received one quarter of the prisoners' earnings and coals, mops, brooms and pails for the use of the prison. The prison chaplain was the Rev. Mr. Addison whose duties comprised a sermon on Sundays and prayers on Wednesdays and Fridays - for this he received the handsome salary of £30 per annum. The surgeon was Mr. Taylor, who received no salary but charged for specific services.

The National concern over prison conditions was shared locally, and various reports exist which throw light on these conditions. One area of concern was over the mixing of hardened criminals with ordinary citizens who had landed in gaol for some trivial offence. The Hon. Edward Harbord relates the sorry tale of the man, Robinson, who normally an honest man, found himself sentenced to

12 months in Aylsham Bridewell for fowl stealing. Inside, he associated with hardened villains, Neale and Hardiment, who plotted to carry out the robbery and murder of a Mr. Baker of Wells. Robinson was persuaded to take part in the plot, but fortunately for him, Neale and Hardiment were released first, and eager to get on with their crime enlisted the services of some other petty criminal in his place. After the crime, the two main villains escaped punishment, but the unfortunate third man was hanged. In a state of remorse, Robinson confessed to his part in the original conspiracy.

Harbord's report throws the last light into conditions in Aylsham Bridewell. Writing about 1819, he says -

"the Bridewell at Aylsham contains eighteen separate cells, four of which the gaoler considers insecure; he is of opinion that the said four cells, situated as they are at a distance from his house, and having windows externally, will admit of the prisoners receiving from without, either food, spirituous liquors, or implements with which they might be enabled to effect their escape. The governor states that one prisoner did actually escape from one of the said cells, in the daytime, a few hours after his being admitted. The prisoner was a cripple. The escape occurred within the last twelve months. The materials with which the bridewell is built are very bad, the bricks appear to have been only half-burned; the inside of the walls is filled with rubbish. The bridewell was erected about thirty-five years ago, and the governor believes it was built by contract."

In its last years the prison must have been quite full -

"in the eighteen cells, the governor has at times been

obliged to dispose of between forty and fifty prisoners. The four insecure cells were added only about twelve months ago, and before that time he was occasionally compelled to place two, and sometimes three prisoners in each of the other cells. "

So the conditions we concern ourselves about today were prevalent over 150 years ago.

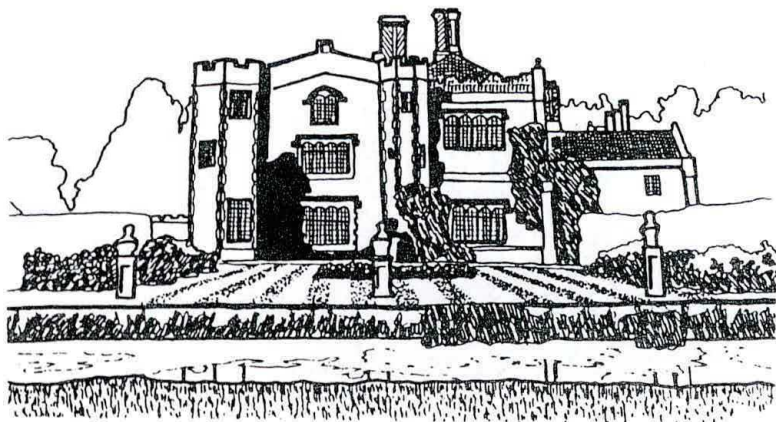
The new County Gaol at Norwich made the bridewell at Aylsham redundant, and Dr. Sapwell records that it was sold in August 1825 to a syndicate headed by Jno. Warnes and divided into lots, and re-sold as houses and shops.

MANNINGTON HALL & GARDENS

Over twenty members and friends went to Mannington Hall and gardens on 27th. July. The weather was absolutely perfect, especially for the walk around the gardens. Those of us who arrived at 2 pm were able to enjoy a walk before being shown around the house. The rose garden which has recently been established was an additional pleasure; the tea rooms were open, enabling some of us to have a 'cuppa' before the House tour.

We assembled at the front door at 3 pm to be welcomed by the Hon. Robin and Mrs. Walpole. We were given quite a detailed description of the outer part of the Hall and then commenced our tour of the house with the Hon. Robin and Mrs Walpole acting as our guides.

Although a small house, when compared to other stately homes there was a wealth of history, and so nice to see a 'lived-in' house. We learned a lot about this fifteenth century house, and learned, too, just how patchy that history is, and how much more of its history remains to be unravelled. The present owners are continually adding to the known history and trying to fill in the gaps. This is the very sort of activity that members of our Society would have every sympathy with.



Kaye Mosse voiced our thanks for the visit. Some of us also visited the ruined church opposite. Despite being open to the heavens, it was rather a novelty to see in the roofless nave, several chairs in place for a service and flowers placed around the walls. The latest member of the Walpole family had been baptised there during the morning, the font still containing the water used for the ceremony.

On arriving home the editor discovered he had left his pullover in the tea room and arranged to collect it the following Sunday. This he did in the middle of a torrential downpour, not another visitor in sight. How lucky we were to have chosen the right Sunday for our visit.

AYLSHAM LITERARY SOCIETY

Our directory entry in this issue [White's 1854] contains the first mention of the Aylsham Literary Society 'established in 1847 for the diffusion of useful and entertaining knowledge'. It is recorded in every subsequent directory, right up to the last Kelly's in 1937. By coincidence, the Society itself ended in November of 1937 after enjoying 90 years of continuous existence.

The first officials listed in the directory are Mr. George Copeman, Hon. Sec. and Mr. Charles Clements librarian. Mr. Copeman was also secretary of a society for 'the encouragement of industry and good conduct among servants and labourers' and clearly was concerned about improving the opportunities and conditions of the working classes.

Mention is made of Charles Clements in the Starling memoirs, where a brief glimpse is seen of him. The occasion was the visit of the Prince and Princess of Wales to Lord Suffield at Gunton Hall. The Prince and Princess drove through from Sandringham, and were met half-way by Lord Suffield. Because it was their first visit, crowds gathered, and the town was be-decked with flags, bunting and greenery. All sorts of jollifications were arranged, culminating in a grand display of fireworks in the evening. As Starling describes - " Mr. Charles Clements had the management of this, and here comes an amusing incident, for when he lighted the first piece, he lighted it at the wrong corner, and when it went off it was all flutters and explosions. Oh dear! how people did laugh, poor Charles' life for a few days must have been a misery".

Starling also tells us that Clements' father, Charles Clements senior, was a noted bell-ringer in his youth. In the 1850's - "if you stood in the Market Place just before 8 o'clock, you would see this old gentleman go trotting across the market with a little lantern in his hand, up the church steeple, and as soon as the clock

HYLSHAM LITERARY SOCIETY

THE READING ROOM

Is open to all Subscribers from 10 a.m.
till 10 p.m.

NOW CONTAINS UPWARDS OF 2000 VOLUMES.

The List of Newspapers and Periodicals now comprises the following:—Standard, Daily News, Telegraph, Pall Mall Gazette, Daily Press, Daily Graphic, Cromer and North Walsham Post, Norfolk News, Norfolk Chronicle, Illustrated London News, Graphic, Punch, Judy, Moonshine, Rural World, The Field, The Queen, Ladies' Pictorial, Exchange and Mart (*Friday*), Building News, Temple Bar, Chambers' Journal, Good Words, Century Magazine, Nineteenth Century, Strand Magazine, Argosy, English Illustrated Magazine, Windsor Magazine, Munsey Magazine, Bradshaw and Local Time Tables, Pearson's Magazine and Architectural Review, and others.

Periodicals are allowed to circulate as soon as replaced by next issue, on application to the Librarian.

Books are given out and received on Monday and Friday After noons from 3 to 4 p.m.; Wednesday and Saturday evenings from 8 to 9 p.m. Members are allowed to retain Books 14 days.

SUBSCRIPTIONS:

FAMILY MEMBERS, 10s. 6d., entitling the Member's Family and Visitors to the use of the Institution.

RESIDENT MEMBERS, 6s.; NON-RESIDENT, 5s.;
QUARTERLY, 2s.

* Subscriptions are payable in advance and become due on the first day of October, and should be paid before the first day of January following.

Mr. A. F. ALDOUS, Hon. Sec.
Mr. Geo. NEALE, Librarian.

struck eight, you would hear the curfew bell". At the death of Mr. Clements, this custom lapsed.

The Literary Society had its home in the Town Hall, where it had a reading room and an interesting library of over 2,000 volumes. There were lectures and occasionally concerts were put on by members. The advertisement for the Literary Society is reproduced from the Aylsham & District Almanac for 1897 and shows how well stocked the library was. The librarian at that time was George Neale, who was also sexton.

The natural successor to the Literary Society is the County Library. This came to Aylsham in 1926, settling in Dyes Loke in 1950. The number of books that the branch library has to offer has grown to over 14,000, so there is without doubt, a much wider choice, and Aylsham branch is the key into the wider system of the County Library, but just reading the list of periodicals available to the members of the Literary Society in 1897 would amaze any branch librarian of the 1980's. Today, no branch of the County Library could afford to offer such a wide range of titles. How much have we improved in the last hundred years?

I suppose one could argue that at least today's library service has a fleet of vehicles offering a mobile library service to all the surrounding villages, and that must be an improvement! But listen to Starling again, this time talking about the carts that went round serving villages. After listing the butchers, fishmongers, hawkers and tea-sellers, he says - " a friend of mine also went round with a small library of monthly volumes of books for several years. He was Harry Nash. He later joined the police force and became Deputy Chief Constable of Norfolk.". Nothing is ever new, it seems. If anything, promotion prospects for mobile librarians were better in those days.

But one thing is definitely new, and that is the following list of books recently added to the County

Library, and all of local interest. You would not have found any of them in the library of the Literary Institute, but you can obtain any of them through a visit to the branch library in Dyes Loke.

- | | |
|---------------------|--|
| BALDWIN J. ed. | 40 years of RAF Sculthorpe 1943-83 |
| BARRINGER J.C. ed. | Aspects of East Anglian prehistory |
| BROOKS P. | Have you heard about Blakeney? |
| CHAPMAN C | Bleak and lonely - Old St.Margaret's church, Hopton on sea |
| COZENS-HARDY B | The gardens of Letheringsett Hall and estate. |
| CRASKE S. | Sheringham - a century of change. |
| INNES H. | East Anglia. |
| LANCASTER-RENNIE J. | Cap and apron to cap and gown |
| MANN J.D. | Essex and Suffolk branch line steam |
| MOORE A. | Norfolk and the Grand Tour |
| NUDDS A. | The woods belong to me - a gamekeeper's Life. |
| OSBORNE D. | A view of Thetford past - Vol 2. |
| PHILLIPS C. | Great Eastern since 1900 |
| REID A. | Cromer and Sheringham: the growth of the holiday trade. 1877-1914 |
| ROBINSON B. | Peddars Way and North Norfolk Coast Path. |
| SCARFE N. | Suffolk in the Middle ages |
| SCOTLAND N. | Methodism and the revolt of the Field: a study of the Methodist contribution to agricultural trade unionism in East Anglia 1872-96 |
| SIMPER R. | East Anglian coast and waterways. |
| STEPHENS W. | The Great Ouse - Fenlands father. |
| STIBBONS P. | A Cromer Album. |
| TOOKE C. | Caister - 200 years a village. |
| TOOKEY J. | East Anglia - watercolours. |
| TRICKER R. | Chalk and churches. |
| TURNER D. | Two West Norfolk Airfields in the Great War. |
| WILSON R. | Red Alert - Lynn! |
| WYMER J. | Paleolithic sites of East Anglia |
| YAXLEY S. | Wymondham Abbey before the Dissolution the Episcopal Visitations of 1492-1532. |

AYLSHAM IN 1854

[Francis White & Co. : Directory of Norfolk.
published in Sheffield. March 1854]

AYLSHAM is a neat and well built market town, pleasantly seated on the southern acclivity of the vale of the Bure, and surrounded by a luxuriant district, richly diversified with picturesque beauty. It is distant 7 miles W.S.W. of North Walsham, 10 miles S. by W. of Cromer, 12 miles N. by W. of Norwich, and 120 miles N.E. by N. of London. The parish has increased its population since the year 1801, from 1667 to 2741, and includes many scattered houses, and the hamlets of *Dun-kirk* and *Drabblegate* on the opposite side of the river. Messrs. James Bulwer, Robt. Copeman, Thos. Rackham, Wm. Repton, and others, have neat residences in the town, and are owners of a large portion of the parish, which contains 4,308a. 1r. 33p. of land, comprised in the four manors of "*Aylsham on the part of the Duchy of Lancaster*," held by the Marquis of Lothian; *Aylsham Wood or Sextons*, of which Geo. Copeman, Esq. is lord; *Aylsham Vicarage*, held by the vicar; and *Bolwick H.U.*, of which John Warnes, Esq. is lord. The first three are subject to certain fines, but the last is held by copy of court roll, or Aylsham Lancaster, and subject to arbitrary fines. Bolwick Hall is situated 1½ miles S.W., Coldham Hall 1½ miles N.N.E., Aylsham Wood House 1 mile N. by E., and Bushy Place on the Cromer road, besides which, there are several other neat residences in the parish. During the reigns of Edward II. and III., Aylsham was the chief town in this part of the kingdom for the manufacture of *linen*, then called "*Aylsham Webbs*, cloth of Aylsham," &c., but in succeeding reigns this branch of business was superseded by the woollen manufacture, and in the time of James I., the people were chiefly employed in knitting worsted stockings, breeches and waistcoat pieces. Since the introduction of frame work knitting, the latter trade has also been discontinued. The town was

formerly governed by a bailiff, and had a weekly market on Saturday, but this has been changed to Tuesday. Cattle *fairs* are held on March 23rd, and the last Tuesday in September, and a *Hiring Session* on the first Tuesday in October, with a small fair on the following Tuesday, chiefly for pedlery and clothing, when the servants come to renew their apparel. The river Bure which washes the foot of the town was formerly only navigable from Yarmouth to Coltishall, but in 1773 an act was obtained for extending the navigation to Aylsham, for boats of 14 tons burthen, which was completed in 1779, at the cost of upwards of £6,000, including the cost of the bason and wharfs near the bridge, where a considerable business is done in coal, corn, and timber. The meetings of the South Erpingham Association for the prosecution of felons, and the encouragement of industry and good conduct among servants and labourers, are held at Aylsham. Mr. James Harrod is secretary to the

former, and Geo. Copeman, Esq. to the latter. The *Choral Society*, established in 1840, for the study and practice of sacred music, holds its meetings at the concert room, in Red Lion street. There is a convenient assembly room at the Black Boy Inn. The *Aylsham Medical Club*, established in 1839, provides medical and surgical assistance for the members and their families; upwards of 600 persons are now entitled to medical aid. Rev. E. T. Yates is treasurer, and Mr. Geo. Roe, secretary. The *Aylsham Literary Society*, established in 1847, for the diffusion of useful and entertaining knowledge, has an interesting library, reading room, and lectures on various scientific subjects are occasionally delivered: Chas. Clements, librarian, and Geo. Copeman, Esq., hon. sec. There are also various other societies for ameliorating the condition and the benefit of the labouring classes, among which is an *Horticultural Society*, which has been carried on with great success since the year 1850. A new *Police Station* was built in 1846, near the Cromer road: Wm. Hannant, resident officer. The *Gas Company* was established in 1850, with a capital of £1,500, in £10 shares. Mr. W. H. Scott, secretary. *Aylsham Spa* was formerly in great celebrity for the cure of asthma, and other chronic diseases, but is now but little used. It is about half a mile south of the town, and belongs to Mr. Elvin. In 1805, an earthen pot, containing 500 pieces of ancient silver coin, chiefly groats of Henry VII., and pennies of the Edwards, were ploughed up in a field near Aylsham. On Stowe Heath, 2 miles E., are several large *tumuli* or *barrows*, in which two urns, containing human bones and ashes, were found in 1808. The *Savings Bank*, established in 1818, has deposits amounting to upwards of £17,000, and is open from 12 to 1 o'clock, every Monday. Mr. George Bower, actuary. The jurisdiction of the *County Court*, held at the Dog Inn, embraces the following places, viz:—Alby, Aylsham, Banningham, Barniugham Parva, Belaugh, Blackling, Brampton, Burgh next Aylsham, Buxton, Calthorpe, Cawston, Colby, Coltishall, Corpusty, Erpingham, Foulsham, Guestwick, Hackford, Hevingham, Heydon, Hindolveston, Hauthois Great and Little, Ingworth, Irmingland, Itteringham, Lamas, Mannington, Marsham, Oulton, Oxnead, Sall, Saxthorpe, Scottow, Skeyton, Stratton, Strawless, Swanton Abbott, Themelthorpe, Thurning, Thwaite by Aylsham, Tuttington, Whitwell, Wickmere, Wolterton. Wood Dalling, and Wood Norton. *Judge*—Thos. Jacob Birch Esq.: *Clerk*—Alex. Edgell, Esq.: *High Bailiff*—Arthur John London, Esq.: *Deputy Bailiff*—Thos. Kerslake: *Sub. Bailiff*—Richd. Allen Pye, and Mr. W. H. Scott, *assistant clerk*, Market place.

THE CHURCH, dedicated to St. Michael, is a commodious and handsome gothic structure, consisting of nave, chancel, side aisles, transepts, and square tower, surmounted by a short spire. It has recently been thoroughly repaired and beautified, and a fine-toned organ was added in 1853, built by Howlett, of Norwich, at the expense of the Rev. E. T. Yates. The large east window, and that on the south side of the altar, were ornamented with stained glass in 1842 and '3, and several windows were similarly decorated in 1853, by Mr. Yarrington, of Norwich, and Pilkington, of St. Helens. The north transept was called St. Peter's

chapel, and had a guild in 1490. In the church are various memorials and monumental inscriptions, some inlaid with various old brasses; and here is a monument of Bishop Jeggon, who died in 1617. In the churchyard is the grave of Humphrey Repton, the celebrated landscape gardener, who died in 1818. The grave is planted with roses and heartsease, &c., and the headstone has a novel but interesting inscription. The living is a vicarage, valued in the King's book at £17 19s. 7d., and endowed with the rectorial tithes of that part of the parish, on the north side of the Bure, with a small manor on the opposite side of the river, where the great tithes belong to the Dean and Chapter of Canterbury, together with the advowson of the living, which is enjoyed by the Rev. E. T. Yates, M.A., who contributed largely toward the recent improvements in the church. The rectorial tithes were commuted in 1838 for £716, and the vicarial for £685 per annum. The Baptists, Wesleyans, and Primitive Methodists have each a chapel here. The *Free School*, near the churchyard, was founded in 1517, by Robt. Jannys, who endowed it with £10 a year, for seven free scholars; but the house and school were rebuilt by a former master, Clement Overton, and the latter was enlarged by subscription in 1814, and is now conducted on the National system. Archbishop Parker founded two scholarships in Corpus Christi College, Cambridge, for boys, from this and Wymondham School, "each to have 12d. a week for their commons, their chamberer, barber, larderer, and other necessaries free." Two commodious schools for boys and girls were erected in 1848, by subscriptions and grants from the National Society and Committee of Privy Council, at the cost of upwards of £700. A Diocesan School was established in 1846, by the late Bishop Stanley, in connection with the Norwich Board of Education, for the instruction of the middle and agricultural classes. The Right Hon. Lord Sondes is the president. An infant school was built here in 1840. *Here is a Branch Flax Association*, and the labourers of the parish are benefitted by two large pieces of land, let to them in garden plots, at low rents. Half an acre, called the Town meadow, belongs to the poor, who have also 10s. 6d. bread money. They had also several cottages given by Simon Porter, in 1730—the lord of the manor, in 1738—and Edwd. Snelling; but were sold a few years back under orders from the Poor Law Board. Thos. Cressey left two houses and 2a. of land for the poor, in the reign of James I. These premises, with additional buildings, were converted into a workhouse many years ago, and were used for that purpose till 1826, when it was discontinued; Aylsham and 45 other parishes being then formed into an Union. The Norfolk railway company intend to apply for an act, at the ensuing session of parliament, to make a railway from Norwich to Aylsham.

In the following Directory of Aylsham, those marked 1 reside in Church hill; 2, Commercial road; 3, Hungate; 4, Market place; 5, Millgate; 6, Norwich road; 7, Pinfold street; 8, Red Lion street; 9, White Hart street; 10, Cawston road; 11, Cromer road; 12, Aylsham Wood; 13, Blickling road; 14, Burgh road; and 15, School lane.

Post Office at Miss Mary Nobbs', Hungate street; letters arrive at 8 a.m., and are despatched at 5.25 p.m.

12 Bacon Mrs. Sophia
 Bidewell Mr. Hy. *Paradise*
 10 Boud Mrs. Mary
 11 Brown Miss Martha
 11 Bulwer Mrs. Mary Ann
 11 Butler Mr. John, sen
 3 Clark Chas. fish dlr
 4 Clements Chas. & Son, printers,
 stationers, booksellers, news
 agents, and stamp sellers
 9 Coleby Misses M. and C.
 Cook Mrs. Ann, *Bushy pl*
 13 Copeman Geo. Esq.
 6 Copeman Geo. & Thos. bankers
 (*draw on Hankey & Co.*)
 6 Copeman Thos. Esq.
 7 Dobson Mrs.
 8 Edwards Jno. glass & china dlr
 9 Elvin Miss Sarah
 15 Gotterson Mrs. Penelope
 11 Gunton Miss F.
 9 Gunton Geo. Esq.
 9 Haddon Jas. glover
 2 Hancock Jno. sawyer
 6 Harrod Jas. banker's clk
 11 Hannah Wm. police officer
 13 Hillman Miss Nancy M.
 14 Hounsfield Mrs. Mary
 3 Howes Robt. vety. surgeon
 13 Hobson Rev. Saml. L.L.B. vicar
 of *Tuttington*
 13 Jones Edwd. supt. of police
 11 Keen Rev. C. T. (Baptist)
 11 Lewis Ingate, coach bldr
 9 Mackill Rev. Thos. (Prim.Met.)
 15 Mileham Wm. artist
 5 Nicholls Jno. carter
 5 Nobbs Miss Mary. *postmistress*
 9 Parker Jno. cooper
 11 Parmeter Rt. Wm. Esq., solicitor
 & clk. of peace
 4 Plant Hy. furniture brkr
 1 Platten Edwd. S. brazier, and
 Temperance coffee hs
 3 Poulton Rev. Wm. *curate*
 8 Purdy Jas. sen. fishmonger
 8 Purdy Jas. jun. clog & patten mkr
 3 Pye Rd. Allen, bailiff to coty ct
 and colr. of rents and debts
 11 Rackham Mrs. Martha
 4 Repton & Scott. solicitors
 4 Repton Wm. solr
 4 Robins Wm. gent

5 Roe Danl. Fdk. solr. clk
 7 Roe Fdk. magistrates' clk
 9 Roe Geo. solr. clk
 11 Sayer Mr. Wm
 6 Scott Willm. Hy. solr. clk. to
 County Court, to Aylsham
 Union. and supt. registrar and
 clk. to Income and Prop. Tax
 Commrs.
 1 Seaman Miss Sophia
 15 Shaw Miss Ann
 3 Shirley Mr. Thos.
 9 Short Misses S. and S. S.
 3 Smart Wm. brewer
 5 Smith Lewis H. inspector of
 weights & measures
 3 Smith Thos. cattle dlr
 14 Soame Geo. mercht's clk
 14 Soame Jno. farm bailiff
 3 Spink Wm. carter
 10 Starters Wm. mstr. Union wrkhs
 8 Tattam Mr. Richd
 2 Turner Fredk. J. tchr. of music
 2 Waller Mr. Jno. Clear
 9 Walpole Miss Jane
 5 Warren Thos. tea dlr
 Warnes J. Esq. *Boldwick hall*
 9 White Geo. par. clk
 9 White Robt. gardener
 5 Wickes Mrs. Susan
 15 Williams Thos. indl. rev. officer
 10 Winterborn Jas. millwright and
 agricltl. machine mkr
 5 Wrench Mr. Benj. E.
 5 Wright Rt. & Thos. boat bldrs
 Yates Rev. Edmd. Telfer, M.A.,
 vicar
 5 Youngs Mrs. Eliz
 Fire and Life Offices.
 11 Atlas, Rt. Wm. Parmeter
 4 Equitable (Fire), Thos. Connold
 4 Hail Storm, Jno. Clover
 4 Norwich Union, Jno. Griffin, &
 (6), Jas. Harrod
 4 Professional (Life), G.E. Burrell
 4 Unity (Fire), G. E. Burrell
 Inns and Taverns.
 5 Anchor, Jas. Fitt
 4 Black Boys' Inn, (and indl. rev.
 office) Jas. Spanton
 8 Bull, Robt. Cossor
 8 Cross Keys, John Ulph

6 Dog Inn, Commercial & Posting
House, Saml. Mullenger
8 New Inn, Dick Feek (and horse
breaker)

Academies.

15 Breese Emily
7 Burke Jane
Diocesan Institution, Rerd.
Wm. Poulton
head master;
Jph. Walker,
second mstr
15 Peake Thomas
& Anne, *National School*
2 Wright Wm.

Bakers and Confectioners.

1 Abbs Wm.
4 Clover Jno.
8 Laken Richd.
10 Plumbly Chas.
9 Soame Jno.
3 Sexton Joseph

Basket Makers.

8 Starling Wm.
5 Watson Jas.

Beerhouses.

Cook S. Wm. *Dun-*
kirk
10 Moy Jno.
5 Nicholds Jno.
9 Pqll Hy.
9 Reynolds Jas.

Blacksmiths.

8 Burton Jno.
10 Butler Wm.
15 Martin Jno.
8 Pike Robt.
9 Tattam Geo. E.

Boot and Shoe Makers.

11 Barney Jas.
10 Culley Jno.
6 Ducker Saml.
8 Elden Th. W.
7 Firmage Jno.
10 Foxball Thos.
3 George Philip
3 Hagens Jno.

3 Johnson Jno.
8 Mack Edwd.
Mayston Sml.
Town Lane

9 Miller Thos.
9 Ostick Robt.
8 Payne Wm.
3 Philip Geo.
8 Rust Eliz.
8 Starling Wm.
14 Thirtle Robt.
5 Tuck Hy.
10 Wilson Jno.

Bricklayers.

10 Bird Stephen
10 Culley Benj.
3 Horstead Jno.

Butchers.

8 Chapman Jno.
8 Sands Jas.
3 Sands Sarah

Chemists and

Druggists.
8 Bane Wm.
4 Symonds Jno.

Coal Dealers

At Canal Basin.
Brown Jas. &
corn)
Copeman and
Soame

8 Margetson Rt.
jun.
11 Mayston Jno.
3 Sexton Jph.

Corn Millers.

Davison Jas. (&
baker) Swan
lane
10 Gardener Wm.
Drake
5 Parmeter and
Bullock (and
maltsters)

Currier.

7 Clark Jno. S.

Farmers.

13 Blyth Wm.
5 Case Jas. Lee
8 Chapman Jno.
3 Clark Jas.
Clark Saml. *Spa*
Colk John, *Cold-*
ham Hall
12 Frostick Danl.
Goodwin Eliz.
Buxton rd
13 Greenwood Ch
10 Lake Wm.
12 Mash Eliz. H.
10 Payne Thos.
10 Postle Robt.
8 Sands Jas.
7 Saunders Emly
10 Soame Hy. E.
Smith Rich. (&
horse dealer)
Buxton rd
Thurtell John.
Stonegate
5 Tipple Geo.
Tipple Willm.
Stonegate
Whiley Jereh.
Wood Hall
12 Wiley Jph.

Gardeners, &c.

5 Fitt Jas.
8 Fitt Edwd.
10 Stearman Jas.
3 Ward Geo.

Grers. & Drprs.

8 Elden Eliz.
8 England Mary
4 Griffin John
8 Page Wm.
4 Plane Dawson
4 Powell Benj.
8 Scott Geo.

Hair Dressers.

4 Dale Robt.
4 Smithson Zph.

Ironmongers &

Braziers.

4 Austen B. S.

8 Rust Eliz.

Joiners, &c.

** are Cabinet Mksr.*
also.

5 Bartram Wm.
& Son
4 Burrell Geo. C.
(& auctnr.)
7 Glistter Thos.
1 Gotterson Th.
7 Grimston Jno.
11* Larke Jno.
2 Maystone Wm
3 Prondfoot Jno

Milliners, &c.

*Marked * are straw*
bonnet makers.

4 Ayton Harriet
9 Broughton E.
8 Elden Eleanor
8 Hatcher Jane
1* Milner Sarah
8 Sutton Harriet

Pantrs. Plmbrs. & Glzrs.

9 Elvin Robt.
8 Pert David
8 Pratt Robt.

Saddlers, &c.

4 Bullock Chas.
8 Fraukland Jas.
4 Laxen Hy.
8 Lemon Benj.

Shopkeepers.

9 Brown Wm.
5 Cory Thos.
8 Skidmore My.
Ann

Stone & Marble Mason.

5 Freeman Jno.

Surgeons.

3 Morton Jno.
4 Morton Rd. K.
4 Smith Fred. P.

Tailors.	3 Stearman Fdk.	5 Bartram Wm.	8 Fitt Jno.
8 Breese Jas.	8 Sutton Jno.	& Son	9 Silence Geo.
Duffield J. Drab-	3 Turner Benj.	4 Burrell Geo. E.	4 Wade Chas. R.
blegate	8 Ulph Richd. (&	10 Calver Thos.	Wheelwrights.
8 Frary Jno.	draper)		10 Craft Hy.
4 Ransome Hora-	10 Whiley Wm.	Watch Makers.	7 Glister Thos.
tio, (& clther)	Timber Mchts.	4 Connold Thos.	8 Ulph Jno.
Bridewell	Brown James,		
corner	Canal basin		

Coaches

From the Dog Inn to Norwich. The Ocean, daily, (Sundays excepted) at 9.15 a.m., and The Times, Mon. Wed. & Sat., at 9.15 a.m.
To Cromer, daily, (Sundays excepted) at 6.15 p.m.
To Holt, The Times, Mon. Wed. & Sat., at 6.15 p.m.
From the Black Boys to Norwich. The Star, daily, (Sun. excepted) at 9.15 a.m.
To Cromer, daily, (Sun. excepted) at 6.15 p.m.
From the Red Lion to Norwich. The Prince of Wales, every Sat. at 9 a.m.

Carriers

From Holt, Cromer, &c., to Norwich, call at the Cross Keys, Monday, Wed. and Sat.
To Norwich, from the Red Lion, Jno. Chapman, (van) daily; Rbt. Margetson, (van) Mon. Wed. & Sat.; and Jas. Purdy, sen. Wed. & Sat. at 8.30 a.m.

Wherries

To Yarmouth weekly, from the Canal basin — Saml. Parmeter, Jas. Mayston, & Fdk. Copeman, & Margeson, & Brown, owners.

RESEARCH GROUP

It is a pleasure to be able to report that all the hard work put in by the Research Group, transcribing and interpreting the 17th. century Aylsham survey should soon be rewarded. Publication of their research is imminent and the product of all that hard work should soon be available to us all.

FUTURE PROGRAMME

A series of six lectures has been arranged to run in conjunction with the Cambridge University Extra-Mural Board to be held at Aylsham High School at 7.30 pm.
Fee: £5 for the series Single lectures £1 each
All under the general heading:

GEORGIAN NORFOLK AND EAST ANGLIA.

October 8th. "18th Century Society" by Dr. Richard Wilson

October 29th. "Agricultural change in 18th century Norfolk"
by Dr. Richard Wilson.

November 19th. "Georgian shops and shopkeepers" by
Mrs. Alayne Fenner

1987

February 11th. "Courting the coy mistress and the whore"
[elections in Suffolk in the early 18th.
century] by Dr. Pat Murrell

March 4th. "The church in the 18th. century" by Miss
Rachel Young

March 25th. "Family in Georgian Norfolk" by Miss Rachel
Young.

NEW YEAR PARTY WILL BE HELD ON FRIDAY 30th. JANUARY 1987
- details later -