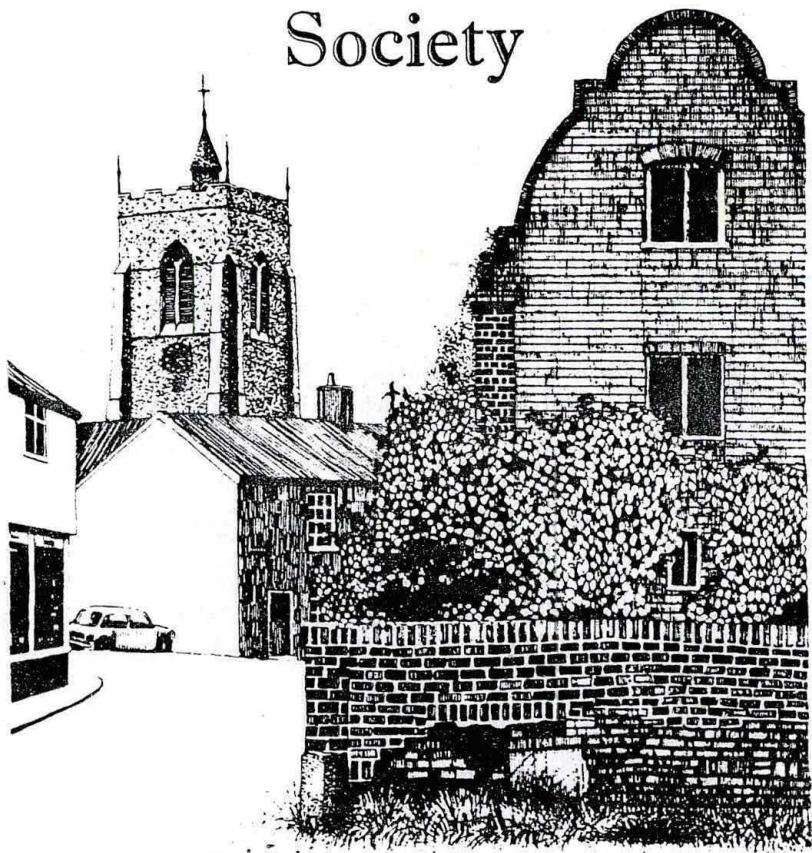


Aylsham Local History Society



Junction of White Hart St. and Red Lion St.

AYLSHAM LOCAL HISTORY SOCIETY

CHAIRMAN

Mr. R. Peabody -
Tel: Aylsham 733230

SECRETARY

Mrs. J. Nolan
Tel: Aylsham 732226

EDITOR

T. Mollard, Flint Cottage, Calthorpe Rd. Erpingham
Tel: Cromer 761638

The illustration on the cover is reproduced by kind permission, from the booklet - "Aylsham conservation area, designated by the County Planning Committee - July 1972" Published by Norfolk County Council.

"NEWSLETTER & JOURNAL Vol.1"

A limited number of copies of the title page and index to Vol 1 is available for members wishing to complete, or bind up the volume. Apply to the editor.

MEMBERSHIP

By mid-April, this year the membership of the Society had reached 84, and still growing!



AYLSHAM LOCAL HISTORY SOCIETY

JOURNAL & NEWSLETTER

Volume 2

Number 1

MARRIAGE A LA MODE

More than sixty members and guests were entertained at the Friendship Club on 24th. March to a witty and entertaining talk on marriage and its customs throughout the ages. The speaker was Richard Barton Wood, Assistant Education Officer in the Norfolk Museums Service. Richard is also the recently acquired son-in-law of Lynette Rust and the talk was in fact a birthday present to her in which the Society also shared. As with all talks where the speaker obviously knows his subject, it was a delight to listen to and to learn some of the more esoteric byways of marriage and Valentine customs.

Nowadays we may raise an eyebrow at some of the modern valentine cards, but the early examples which were displayed had a crueller streak in the verses than do today's. Many glimpses of wedding customs came through the words of famous people of the past - from Sir Thomas More, and from the Pastons with their highly mercenary approach. Darwin was more honest than most, he was more concerned about the welfare of his horse than his wife.

It was particularly interesting to see the many examples of the real thing, particularly wedding dresses, and to learn that white has only been customary since the late eighteenth century. It was a thoroughly good evening, and an excellent birthday present.

NORFOLK HISTORY FAIR

It was reported briefly in the last issue of the Newsletter, that our Society has committed itself to taking part in the Norfolk History Fair at Gressenhall Rural Life Museum on September 24-25th. Following a briefing meeting which two of our members attended, a lot more of the details can now be reported

This is clearly going to be the largest local history event ever to be staged in Norfolk. At the briefing meeting, held at the Dragon Hall in Norwich, a large audience attended, and already over sixty societies are committed to participate, and probably this number will reach over one hundred eventually. The Dragon Hall which is still in a very rough state of restoration will eventually become the home of the Norfolk & Norwich Heritage Trust, and be the base for similar activities in the future.

The Local History Fair is organised jointly by the Friends of Gressenhall and the Federation of Norfolk Historical & Archaeological Organisations which we belong to. There will be a lot of sponsorship from local firms i.e. - Bernard Matthews, Ben Burgess, Fitzmaurice Carriers, Fielden & Mawson and Poppyland Publishing. Eastern Counties Newspapers will support publicity and advertising to the tune of £4,000, and there will be a sustained publicity campaign prior to the event. At the Fair, publicity will also come from Radio Norfolk who will broadcast from the Fair on the Sunday morning. It is going to be a splendid opportunity for us to advertise ourselves and to see other organisations with similar interests. The sort of activities to be seen, or take part in, were detailed by members of the organising committee which included

Chris Barringer, Andy Read (chairman), Bridget Yates and Peter Stibbons (publicity officer). They will include lectures, films, tours, music, morris dancing, displays, flint knapping etc etc. Horses will be working on some of the fields, and food and drink will be available for all. With the publicity we could anticipate 10-15,000 visitors.

Admission will be £2 per head which gives access to everything including admission to the Museum. If we are to make a success of our part in the Fair, it is going to call for a lot of hard work and effort from many of the Society's members. No doubt a committee will be formed to organise our contribution, if any members feel that they can offer help please let our Secretary know as soon as possible.

--ooOoo--

NORFOLK ARCHAEOLOGICAL RESCUE GROUP

This group, based at Gressenhall, has decided to undertake the project of a county-wide survey of Nonconformist places of worship. In a letter to our Society they say . . . "we took the view that as these buildings were disappearing at an alarming rate into dereliction or to conversion into either commercial or domestic use, they should be recorded as quickly as possible, including associated buildings and churchyards."

The chairman of the Buildings Group undertaking this project is George Fenner who, together with his wife, will be conducting the day school on Aylsham buildings on 7th. May, and would be pleased to hear from interested persons able to help.

--ooOoo--

VISIT TO THE ROYAL ACADEMY OF ARTS

On Saturday, 27th. February, a group of us met in the Market Place for a visit to the Royal Academy of Arts in London for the Age of Chivalry exhibition. The day started dry but cold as we left at 7.05am and headed out towards North Walsham to pick up members of the North Walsham society who were going with us.

We were soon on the road towards Norwich and the A11/M11 and arrived in London at the Royal Academy just after 11am and in bright sunshine. There we met a queue which was right down the courtyard, and we had to wait in the entrance hall whilst tickets were arranged. This took about twenty minutes, and then entry could be made.

The exhibition hall was so full that it made viewing almost impossible. The easiest things to see were the stained glass windows, which were able to be set up high and so make it easy to see, but other items like the manuscripts, seals, vestments and other artifacts were made more difficult by the press of people around the display cabinets. Of the labels which described the items, these were too small and too low, making it impossible to read any of these; a criticism judged by all who went to the exhibition.

During the afternoon, some members of the party went out on to the streets of London to visit shops or churches, or to find somewhere for lunch, other than the cafe in the Royal Academy, but certainly to get a breath of fresh air. Soon it was time to leave for home, and we all made our way to the entrance to pick up the coach.

We left at 5pm. and made our way out through north London, via Dalston, until we reached the M11, and then it was on to North Walsham and Aylsham, where we arrived about 9pm. I think most people agreed that it was a good day out, and was enjoyed by all - only marred by the bad labelling.

George Collins

BLICKLING GOLF CLUB

Ben Rust

Since writing the short history of Blickling Golf Club, published June 1986, much has happened.

At a meeting held on April 10th.1986 a decision was taken to make further representations to the National Trust, in an effort to obtain permission to start a golf course somewhere on the park. Regrettably, the Trust did not think that a golf course was compatible with an eighteenth century landscape, and therefore it is unlikely that the park can be used for golf in the foreseeable future.

Having accepted this decision, a general meeting of all known past members of the club was called for January 14th.1988, and a formal decision was taken at the meeting to wind up the club and dispose of the assets.

The club records have been given to Aylsham Parish Council for safekeeping. In addition, a suitable display case costing not more than £100 will be given to the Council to display some of the records and other memorabilia of the Archivist's choice. The club minute books date back to 1914; there are also books recording competitions, matches, lists of members, local rules and score cards. A set of fixture cards from 1904 gives the names of officers of the club names of members and dates of competitions throughout the year.

A number of trophies have been presented to the club, and these were awarded annually to winners of competitions, who held the trophy for one year, and retained a replica or silver spoon. Anyone winning a trophy for three consecutive years was allowed to keep it. Thus, the Spurrell Cup was replaced by the Gidney Bowl in 1910. Gidney was a well known name in the club. H.J.Gidney was treasurer; A.R.Gidney became captain in 1914. H.J.Gidney was captain in 1923

and 1924, and Miss L.Gidney was Ladies' Captain in 1932. The Gidney Bowl was won outright in 1929 by J.F.Bond, and it was replaced by the Gilbert Cup presented by a well known, long standing member, Brigadier General A.R.Gilbert.

When the club finished in 1942, there were five trophies for the men, and two for the ladies. With the exception of the Oakden Cup for the ladies, they were all put in the bank for safekeeping. They were competed for again in 1957-61, and when the club closed in 1961, three trophies were loaned to other clubs or societies, and two were retained for competition among members of the Blickling Golfing Association. Unfortunately, the Association did not function, and the trophies cannot be traced. Two of the trophies loaned out are also missing.

So, only two trophies were available for the meeting to dispose of:-

1. The Lothian Medal, first presented in 1910, has been given to the Aylsham Golfing Society.
2. The Hoffman Cup, first presented in 1924, has been given to the Royal Cromer Golf Club.

If any of the missing trophies are found, they will be given to the Aylsham Golfing Society. Listing them might jog someone's memory, and we would be pleased to have news of them:-

- The Savill-Onley Cup, presented in 1914.
- The Gilbert Cup, presented in 1930.
- The Ellen Chalmers Cup, presented in 1939.
- The Coronation Rose Bowl, presented in 1937.

Subject to National Trust agreement, the members will give a number of young oak trees for planting in the park. One tree will be planted on the site of the original golf course, and a sum of £25 has been allowed to provide an engraved plate recording the

gift, and perpetuating the name of Blickling Golf Club. The remaining money, amounting to approximately £400, will be shared equally between two Aylsham charities:-

- Aylsham Recreation Ground.
- Aylsham Care Trust.

The meeting then closed, and Blickling Golf Club officially came to an end after nearly 100 years.

Following the meeting, light refreshments were served while the members reminisced amongst themselves and with the Press. Some golfing stories are worth recording.

Walter Wade claims the record for the longest drive - 1000 yards!. Playing one winter in the early thirties, he drove from a tee near the lake, and sliced his ball. The lake was frozen, and the ball hit the ice and ran the length of the lake.!

Following a club competition in 1959, members retired to the Buckinghamshire Arms for an evening meal. On this occasion, a member had borrowed a car from the garage, and, as usual, parked outside the pub leaving the ignition keys in the car. After the evening meal he drove home in his borrowed car. Next morning, on taking his clubs out of the car, he was surprised to find they were not his. On looking more closely at the car, he was dumbfounded to discover it was not the one he had borrowed from the garage. On phoning the owner, and asking how he got home, he replied, - "Oh, I waited until there was one car left, and took that!"

Since the meeting, more information and some photographs have been given to me. The photographs show the Ladies' team, and there is also a good group of four on the 8th. green near the lake. Two press cuttings in the Laxen scrapbook effectively date the start of the course and the club.

13th.March 1891 - AYLSHAM GOLF

By kind permission of the Marchioness of Lothian, a small free links has been prepared in Blickling Park, where the turf being short and the ground somewhat undulating, this healthy and interesting game may be enjoyed. If it finds favour in this district, a club will probably be formed. Mr.Dewhirst will be pleased to give any information that may be desired.

Two years later, a club had been formed, and is referred to in a report dated March 28th.1893.

"The competition for the monthly medal took place on Saturday on the Blickling Golf Links with the following result:-

	1st.round	2nd.round	handicap	Net.
Harold Reeve	63	58	35	86
F.Little				89
H.J.Gidney				97
J.H.Mannall				97
D.R.Gooding				110

--oo0oo--

LETTERS

Hobbits Annexe
Courtmead Road
Cuckfield
Sussex

Dear Sir,

My Grandfather, George Wilson, was born in Aylsham in 1887, married a Rachael Coe in 1910, and was living in Millgate St. with three daughters around the first World War, after which he moved to East Grinstead in Sussex.

I would be very interested to hear from anyone who remembers him (or his brother Sydney who is mentioned on the Aylsham War Memorial). I realise by now they must be few and far between, but the family were strong Salvationists and I have a photograph of the family in uniform with musical instruments.

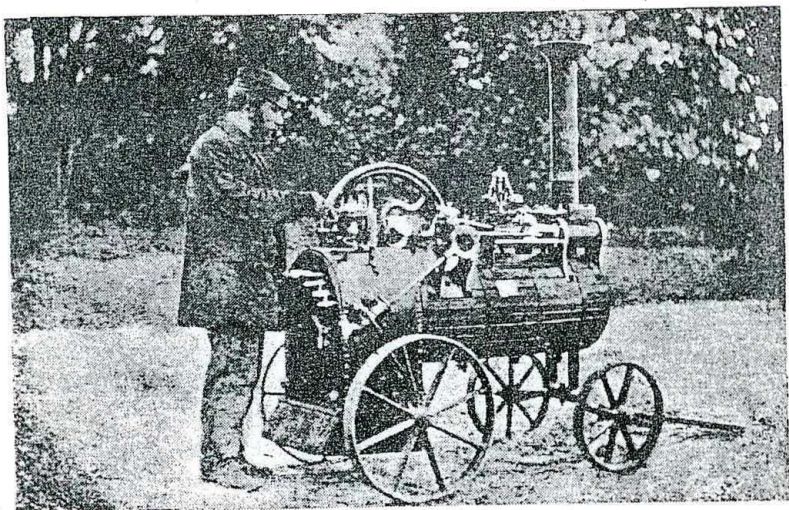
It would also appear that his father, John Wilson, born Ingworth in 1860, was the Aylsham tollgate keeper in 1871 (?). The whereabouts of a photograph or postcard depicting this would be a priceless find, should I be so lucky.

I have been lucky enough to visit the town a couple of times. I am distantly related to Beatrice Spink of Hungate St., and walking down Millgate I felt a nice sense of knowing "my roots" at last.

Yours sincerely

Clare Wilson

Can any members help? - please reply directly to Clare Wilson..



The first engine made to drive a Roundabout by S. G. Soame of Marsham.



The first Steam Organ Engine, made by S. G. Soame of Marsham

TWO NORFOLK MEN OF STEAM - FREDERICK SAVAGE AND SIDNEY SOAME. Michael E. Hupton

The majority of modern travellers speeding along the main Norwich to Aylsham road are unlikely to be aware of the fact that two of the villages they pass through, only a short distance apart, were once the homes of two of Norfolk's most illustrious steam pioneers.

Frederick Savage was born at Hevingham on March 3rd. 1828 and grew up to develop a keen interest in all things mechanical. In those days steam had only recently been harnessed to passenger railways, and when, at the age of sixteen he found work with a whitesmith at East Dereham, the use of steam power in agriculture was still largely in its infancy. There was a tremendous ignorance and prejudice against mechanisation on farms, and the few steam engines which were in use were of the stationary type, or portables pulled around by horses. Indeed, it is interesting to note that the horse power designation given to these early portables is thought to have been calculated solely from the number of horses which were required to pull them!

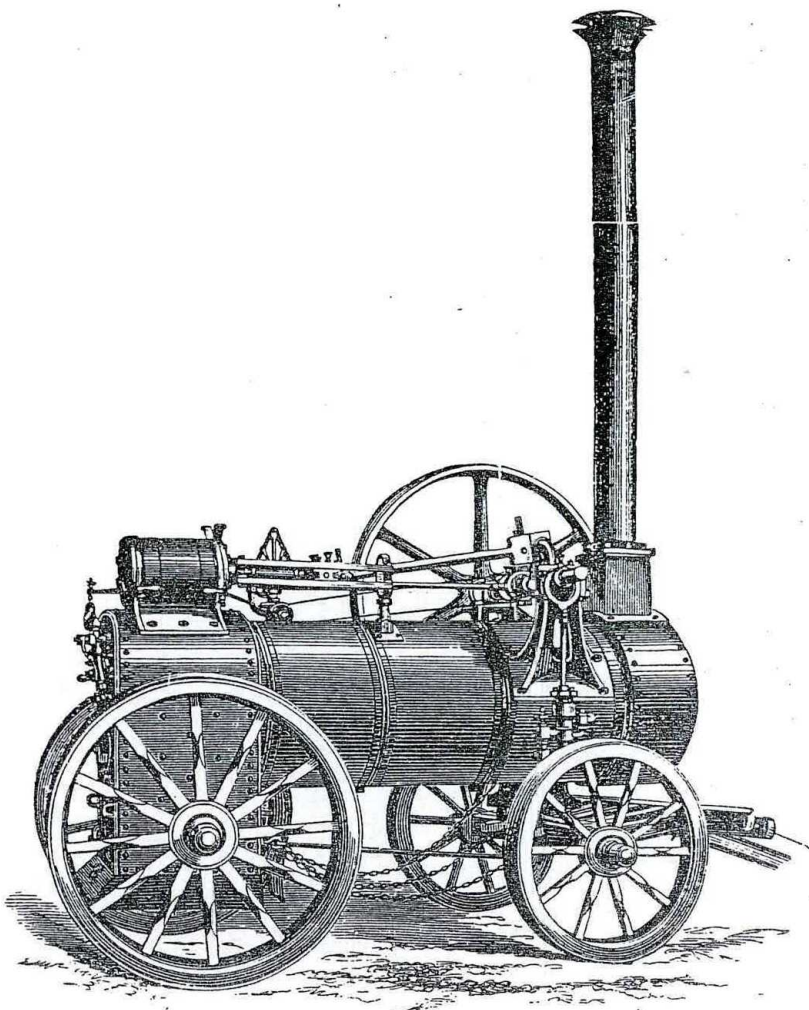
On the retirement of his employer in 1848, Frederick Savage was obliged to seek fresh work, and this he found at a workshop in Kings Lynn. Here he worked until he had saved enough money to open his own business, and after two or three moves to larger premises he eventually opened his St. Nicholas Iron Works in the town. Here he designed and built a wide range of steam engines, agricultural implements and the fairground machinery, rides and equipment for which he was to become best known. In the years these works were in operation, the only other large scale builder of steam engines in Norfolk was the famous Charles Burrell at Thetford. Following the death of Frederick Savage in 1897, a plaque was unveiled at his cottage birthplace at Hevingham in recognition of his many achievements.

Many years later, in 1975, a full-scale working replica of one of his first self-moving chain driven traction engines was built by Belmec International, of St.Germans, Kings Lynn, using patterns and drawings which had survived in the old factory.

By coincidence, there was another, brilliant, though somewhat less well known engineer, living in one of Hevingham's neighbouring villages in the second half of the nineteenth century. His name was Sidney George Soame, and his workshop, named 'The Perseverance Works' at Marsham, was established in 1860. In ~~later~~ years, his son took over the business, and it became the Marsham Engineering Company in 1945.

Sidney Soame was also a builder of steam engines, mainly small portable and stationary types, although he built a few larger vertical engines - some of which drove machinery in Norwich workshops for many years. One of Soame's portables achieved the distinction of being the first steam engine to drive a piece of fairground equipment. Soame towed it to Aylsham, where he used a flat leather belt to take the drive from the engine to a small merry-go-round which gave rides at a public fair in the town. Here it was seen by Frederick Savage, who was so greatly impressed that he later developed the idea, building similar machines in his own works at Kings Lynn, where he had better resources to manufacture them than did Soame. The idea of using a small steam engine to power a fairground organ also had its origin in Soame's Marsham works.

But the machine for which Sidney Soame is possibly best remembered, is the remarkable steam carriage which he designed, constructed and operated on Norfolk roads at the end of the last century and in the early 1900's. He only built the one, as it was intended primarily for his own use, and as far as is known, it was the second passenger carrying road vehicle built in Norfolk. The first has been attributed to a man named



An early example of Savage Portable Engine.

The illustrations used in this article are reproduced from "Steam engine builders of Norfolk" by R.H.Clark (1948)

Mackenzie, who in 1874 built a steam driven brougham down near the Norfolk/Suffolk border at Scole. However, Soame's machine was probably the most successful as it was used for many years and happily has survived to the present day.

The agricultural origins of Soame's steam carriage were reflected in its appearance, for it looked not unlike a hay wagon of the period, though of smaller size. Six steel poles supported a full length canopy through which the boiler chimney passed, and this provided passengers with minimal protection from the elements, smoke and soots. Much of the vehicle was constructed of wood, and the side panels were quite ornately carved. It was obviously assembled with a great deal of care and pride.

A pair of large driving wheels were used at the rear, with smaller ones at the front, and these were all shod with iron tyres. Suspension, naturally enough, was by cart springs. The vehicle was steered by a tiller at the front, where two iron-framed bench seats were mounted to accommodate four passengers. Behind these were placed the boiler and the engine, and at the rear was another seat for the driver-cum-stoker. The vehicle, therefore, required two persons to operate it, and in practise, Soame's nephew usually sat at the front steering, whilst Soame himself sat at the back to operate the controls, and stoke the coke-fired boiler, which was a vertical type heavily lagged with mahogany strips - in similar fashion to steam-powered river launches of the period.

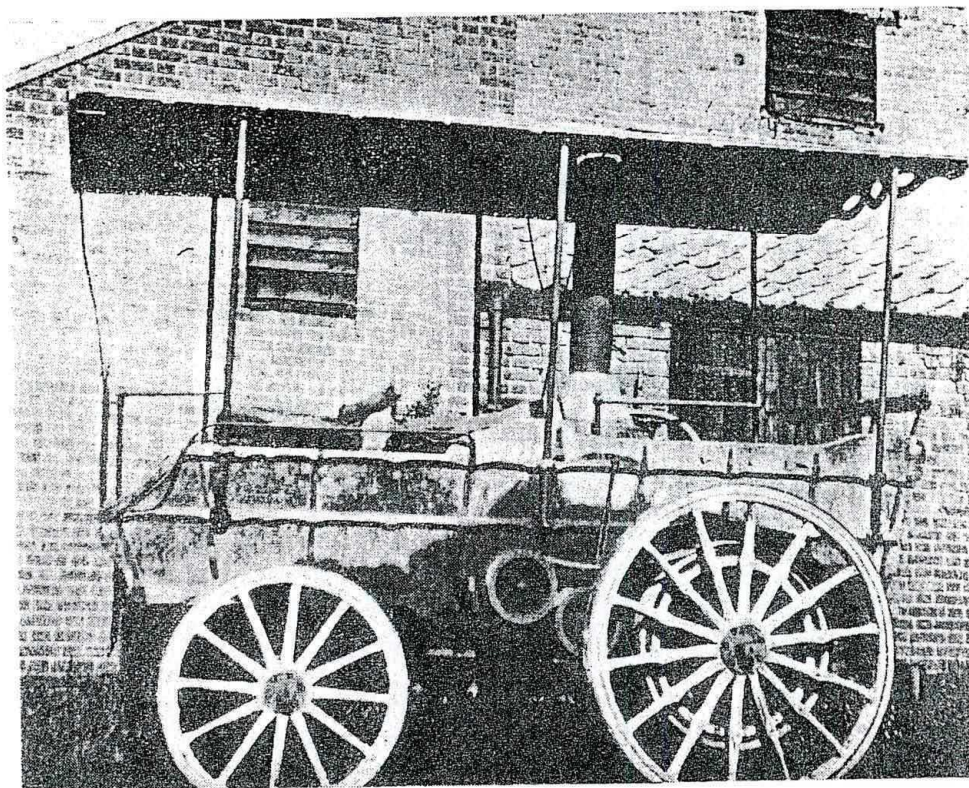
The engine was a horizontal compound type - with one cylinder either side - and drove by gearing which provided two speeds. The gears were arranged similar to those of a traction engine, so that the vehicle had to be drawn to a halt in order to change gear. Final drive was by a flat leather belt on each side via a system of pulleys which worked well enough,

except that in wet weather - like early belt driven motorcycles - the belts tended to slip. With its five passengers on board the vehicle would cruise happily at around 12 mph., but was fully capable of reaching speeds of up to 25 mph. even though its only brakes were crude blocks which pressed against the rear tyres! The vehicle proved to be a great success, and was used by Soame for several years. It must have covered many hundreds of miles for it was frequently used for visiting Norwich, and also Reepham and Aylsham markets, Cawston, Foulsham and other places. Its precise date of construction is not known although it was officially dated by the Veteran Car Club as 1897, which means only that it could not have been built later than that date, and may indeed be a little older than the dating certificate - possibly as early as 1894.

In the mid-1950's the vehicle emerged again in private ownership in the hands of the late Mr. Edwards of Brooke, near Norwich. It was beautifully renovated and repainted in bright blue with red wheels, its brasswork was highly polished, and it still carried its original registration number AH 136 which was issued in Norwich when such registration became compulsory in 1904. In this post-war period it generally became known as the 'Soame Steam Cart' and it gave Mr. Edwards a great deal of pleasure driving it on the still relatively quiet roads of the time. Everywhere he took the machine it created enormous interest, and particularly in 1957 when he drove it by road all the way down to Sudbury, in Suffolk, to attend one of the first steam engine rallies to be held in East Anglia, organised by the East Anglian Traction Engine Club. Here it was awarded a rosette and was attended by a gentleman holding a red flag! Towards the end of the decade, the vehicle was twice taken south to participate in the London-Brighton veteran car run, which it completed without any problems except that its iron tyres made a tremendous noise rumbling along the tarmaced road, and its approach could be heard from a considerable distance.

Also, it was exhibited at the Norfolk Steam Engine Club's rallies held at Woodton in the early 1960's, and on each occasion was driven by road from Blofield where it was kept at that time.

The Soame Steam Cart, the Savage traction engine replica, and a handful of surviving original Savage stationary and portable engines and fairground machines, should ensure that the two enterprising Norfolk engineers of Victorian England are not forgotten by future generations.



S. G. Soame's Steam Car—A.H. 136.

**FEDERATION OF NORFOLK
HISTORICAL AND
ARCHAEOLOGICAL ORGANISATIONS
DIARY
MARCH 1988 – NOVEMBER 1988**

(Updated and revised list of future events. See previous issue for details of individual societies and their meeting places)

MAY

1 Sun.	Footpath Walk – National Environment Week, 2.00pm The Green	PMS
5 Thurs.	History of Water Supplies in Norfolk	NIAS
7 Sat.	Further Anglo-Saxon Excavations at Brandon, Robert Carr, S.A.U. + A.G.M.	NARG
10 Tues.	Parish Surveys. Chris Barringer M.A.	WNKLAS
11 Wed.	The Beginnings of Heraldry, J.K. Norton	NHS
14 Sat.	History & Wildlife of the Eastern Broads. M. George at Gt. Yarmouth	CUEMB
	The Timber Framed Buildings of Norwich. V. Nierop-Reading R.I.B.A. 9.30am–4.15pm. Fee £5.50 This is a repeat by popular demand	WL
16–27	Exhibition featuring the history of the Society at Central Library, Gt. Yarmouth	GYDAS
20 Fri.	A.G.M. + Centenary Celebrations	GYDAS
	A.G.M.	NNGS
21 Sat.	Richard III, Villain or Victim of Historians?	RIIIS
28 Sat.	Traditional Domestic Buildings of Essex – New Work & Dating. A. Gibson, J. McCann, D. Stenning & M. Wadhams at Chelmsford	CUEMB

JUNE

4 Sat.	Fotheringay, Dr. P. Stone	RIIIS
5 Sun.	Excursion to Caister on Sea & Great Yarmouth	NRC
9 Thurs.	Boulton & Paul Training Film at Pottergate Training Centre	NIAS
11 Sat.	Norwich Cathedral Roof Bosses, M. Rose including a visit	CUEMB

- | | | |
|----------|---|-------|
| 17-19 | Parish Churches of Norwich,
Chris Barringer
Residential Fee £59, non-resident Fee £45 | WL |
| 21 Tues. | Town Tour, from the Parish Church gates at
7pm to commemorate the Society's first
Town Hall Walk, 100 years ago | GYDAS |
| 25 Sat. | Visit to churches of Heraldic interest in South
Norfolk | NHS |
| | New work on the history of Breckland, R. Carr
& M. Bailey at Thetford. It will include a
field visit | CUEMB |

JULY

- | | | |
|----------|--|-------|
| 7 Thurs. | The Stories of Wherries. B. Malster | NIAS |
| 15 Fri. | Conducted tour of the Merchants House, Row
Houses & Greyfriars Cloisters, courtesy
of English Heritage, and 4, South Quay
courtesy of Norfolk Museum Service.
Start 7pm at Row 111 | GYDAS |
| 17 Sun. | Study of Probate Records, Wills and
Inventories, N. Evans, U. Priestley,
& M. Johnson at Haughley, Suffolk | CUEMB |
| 30 Sat. | Life on the Green; the Greens and Commons
of Suffolk, E. Martin, P. Warner &
J. Ridgard at Haughley, Suffolk | CUEMB |

SEPTEMBER

- | | | |
|-------|--|-------|
| 9-11 | Churches of the Fens, Chris Barringer,
Residential fee £59 including full day
excursion | CUEMB |
| 24-25 | Norfolk History Fair at Gressenhall
Rural Life Museum organised by the
Federation and Friends of Gressenhall | |

OCTOBER

- | | | |
|---------|---|-------|
| 8 Sat. | Medieval Brasses, M. Wilson | RIHS |
| 15 Sat. | Reconstituting Historical Communities,
D. Mills & M. Spufford at Cambridge | CUEMB |
| 22 Sat. | To be arranged | HA |

NOVEMBER

- | | | |
|---------|------------------------------|------|
| 5 Sat. | Dukes of Burgundy, D. Weekes | RIHS |
| 19 Sat. | A.G.M. | HA |

LIBRARY LIST

Every title listed below has been added recently to the stock of Norfolk Library and Information Service. They are to be found in different libraries throughout the county, but all are obtainable through Aylsham library. Each one has a local subject interest.

---oo0oo---

AMIS Arthur.	Trunch Methodist church.1937-87
AYTON Margaret	The voice within (poems)
BAKER Len	Of swans and other people.(poems)
BARNES Paul	Out and about with Anything Goes.
BARRETT-LENNARD Joan	East Anglian Pot Lids.
BISHOP Sylvia	Jenny Lind in Norwich.(1820-27)
BLOOM Alan	A Plantsman's perspective.
BOWDEN-SMITH R.	The Water house; Houghton Hall
BURTON Jack	City of churches.
CALVERT Laurence	Till fire ceases to burn (poems)
CARTER Anne	Postwick: story of a Norfolk village
CHURCH Robert	Murder in East Anglia.
CLEVELAND David.	East Anglia on film.
CORDY J.M.	My memories of the first World War.
DANIELS Derek J.	Winning through. 1932-60
DANIELS L.Tom	Frontier challenge.
DAVY Terry	Dereham; past and present.
DAVY Terry	A visitor's guide to Dereham.
FINCH Roger	Sailing craft of East Anglia.
GEOGRAPHICAL ASSOC.	The Brecklands.
GLENN Alfred	Weather pattern of East Anglia.
GRIFFITHS Elizabeth.	Buxom to the Mayor: a history of the Norwich Freemen.
HAISELDEN D.C.	Peddars Way and Norfolk coast path.

- HILL B. The history of the New Buckenham silver band.
- HOPKINSON Barbara. Norfolk in colour.
- JARVIS Stan Smuggling in East Anglia 1700-1840
- KINGS LYNN & WEST NORFOLK BOROUGH COUNCIL.
Electrification; the Kings Lynn and London railway.
- KITSON Sydney D. The life of John Sell Cotman.
- LEIGHTON Moya Spend a day in Broadland (cassette).
- LEVERETT Jack Bygone memories of Scole.
- MANN J.D. East Anglian steam gallery. Part 1
- MASSEN S. Snettisham
- MATTHEWS A.W. Shipdham.information handbook.
- MELLING Cecil T. Light in the East: first decade of the Eastern Electricity Boards.
- MIDGLEY Patricia The Northenders
- M.&G.N. Circle Running a Norfolk railway.
- MOFFAT Hugh East Anglia's first railways.
- N.C.C. PLANNING DEPT. Historic buildings in Norfolk: problems and opportunities.
- NORFOLK & NORWICH GENEALOGICAL SOCIETY
Parish registers of Norfolk:
- No.23 Gooderstone. 1563-1837
- No.24 Colney. 1705/6 - 1837
- NORFOLK & SUFFOLK AVIATION MUSEUM: Airfields of Norfolk and Suffolk; Part 1.
- " " A guide to aeronautical memorials In Norfolk and Suffolk.
- NORFOLK MUSEUMS SERVICE Digging deeper; recent archaeology in Norwich.
- NORFOLK RURAL COMMUNITY COUNCIL: Directory of village halls in Norfolk.
- OSBORNE David. A view of Thetford past Vol 3.
- PAINE Thomas Thomas Paine reader.
- PARISH and vital records list of England for the International Genealogical index 1984, Vol 3. Norfolk, Suffolk & Essex.
- PATTERSON A.H. Widfowlers and poachers.
- PARTNER Jason With pen and brush.

PITCHER Harvey	Lily: an Anglo-Russian romance.
RIELEYJ.O.	Botanical and vegetation survey of the City of Norwich.
ROSE M.	George Borrow; a vignette
ROSE M.	Rev.Benjamin John Armstrong, vicar of East Dereham 1850-88: a vignette.
ROSE M.	William Cowper; a vignette.
ROYAL CROMER GOLF CLUB	A hundred years of Royal Cromer Golf Club.
RUSH Len.	Captain of the Queen's flight.
SCARFE Norman	Suffolk landscape (rev.ed.)
SESSIONS W.K.	First printers in Norwich from 1567.
SIMPER Robert	East Coast sail.
SINCLAIR OLGA.	When wherries sailed by.
SMITH S.& B.	Shield and sword: a history of a trade union local branch.
SOTHERTON N.	Commoysen in Norfolk 1549.
SPERO Carol	Taking the children too.
TENNYSON Julian	Suffolk scene.
TEUN Michael	The rows of Great Yarmouth.
TIMPSON John	Timpson's England.
TURNER David E.	History of Narborough, Part 3.
	-barges to biplanes.
WILSON Raymond	Bygone Lynn.
WISE M.	East Anglian book of verse.
WOODFORDE James	Ansford Diaries of James Woodforde
	Vol 4. 1769-1771
WOODS M.	Looking back at Shipdham.

---ooOoo---

NOTHING CHANGES!

Football hooligans in Europe, or the antics of the British once they go abroad, obviously have a long history. Did you see the holiday feature in a recent issue of the Sunday Times? Describing the medieval pilgrim route to the shrine of St. James at Compostella in Spain, the writer mused on the various images that came to mind as he first set eyes on the city . . .

Dark
reflections may pass through the
mind. That the Moors razed this
place in the 10th century, carrying
off its bells to Cordoba on the backs
of Christian slaves. That John of
Gaunt brought such a rabble army
here that English pilgrims were
banned for years.

. . . surely, they didn't come from Aylsham?

AYLSHAM IN 1865

Our latest entry in the sequence of Norfolk directories brings us up to 1865, with the extract from Kelly's directory of that year.

AYLSHAM is a parish, market and union town in South Erpingham hundred, Aylsham union, rural deanery of Ingworth, archdeaconry and diocese of Norwich, East Norfolk, 125½ miles from London, 12 north from Norwich station, 11 from Cromer, and 11 from Holt; it stands on the banks of the river Bure, which is navigable hence to Yarmouth. The church of St. Michael was built by John of Gaunt, Duke of Lancaster, the court of whose duchy was once held in this town: it has tower, with steeple, containing 10 bells; also clock and organ: the font is enriched with bas-reliefs of the four emblems of the Evangelists, the instruments of the Passion, and the arms of Gaunt, with other armorial insignia: the screens were painted with saints, martyrs and confessors, in 1507, principally at the cost of Thomas Wymer, who, on his monument, is represented in a winding sheet: here is a monument to the memory of Richard Howard, sheriff of Norwich, who, in 1488, built the church porch: the east window, which has been retraced, is decorated with stained glass, representing the four most favoured disciples of our Blessed Lord, with various devices, and armorial bearings of the late Earl of Buckingham and heir of Blickling, the Bishop of Norwich, the Dean and Chapter of Norwich and Canterbury, the present vicar, &c.: a stained side window is dedicated to the memory of eight former vicars; another contains some beautiful specimens of old glass, recently inserted at the expense of the vicar, containing the armorial bearings of his family, and of the lay impropiator of the parish, S. Pitman, Esq., together with those of the Dowager Lady Suffield, &c.: in a recess in the churchyard, in a piece of lawn enclosed with iron rails, planted with roses, heartsease, and other flowers, is the grave of Humphrey Repton, the celebrated landscape gardener, who died March 24th, 1818. The register dates from 1653: The living is a vicarage, annual value: £533, with residence, in the gift of the Dean and Chapter of Canterbury, and held by the Rev. Edmund Telfer Yates, M.A., of Oriel College, Oxford; the Rev. Augustus Newland Delafosse, M.A., of Oriel College, Oxford, is curate.: The Dean and Chapter of Canterbury hold the great tithes, which are leased to S. Pitman, Esq. The Baptists, Wesleyans, and Primitive Methodists have each a chapel. The corn market is held on Tuesday, in the Corn Exchange: Fairs are held yearly on March 23 and last Tuesday in September, and a hiring for servants on the first Tuesday in October.: A Free school was founded here in 1517 by Robert Jannys, mayor of Norwich in that year; it is now conducted upon the National system: here is an Infant school, on the same system. One of the county Bridewells was formerly in this town, but is now converted into dwelling-houses.

Petty sessions are held the first and third Tuesday in each month at the Black Boys hotel; Mr. William Forster is the clerk to magistrates. A county court is also held here; the district comprises the following parishes:—Aylsham, Alby, Alderford, Banningham, Barningham Parva, Belaugh, Blickling, Bampton, Booton, Burgh, Brandeston, Buxton, Calthorpe, Cawston, Colby, Coltishall, Corpusty, Erpingham, Foulsham, Guestwick, Hackford, Hautbois Magna, Haverjingham, Hevingham, Heydon, Hindolveston, Ingworth, Irmingland, Itteringham, Lamas-with-Hautbois Parva, Mannington, Marsham, Oulton, Oxnead, Reepham-with-Kerdistone, Sall, Saxthorpe, Scottow, Skeyton, Stratton Strawless, Swanton Abbott, Swannington, Themelthorpe, Thurning, Thwaite, Tuttington, Whitwell, Wickmere, Witchingham (Great), Witchingham (Little), Wood Dalling, Wood Norton and Wolterton. A savings bank was established in 1818, and is open from 12 to 1 every Monday; here is also a literary institution. A short distance from the town is a mineral spring. The union includes the following parishes:—Alby, Aylsham, Banningham, Barningham Parva, Belaugh, Blickling, Bampton, Burgh, Buxton, Calthorpe, Cawston, Colby, Coltishall, Corpusty, Erpingham, Foulsham, Guestwick, Hackford by Reepham, Hautbois Magna, Hevingham, Heydon, Hindolveston, Ingworth, Irmingland, Itteringham, Lamas-with-Little Hautbois, Mannington, Marsham, Oulton, Oxnead, Reepham-with-Kerdistone, Sall, Saxthorpe, Scottow, Skeyton, Stratton Strawless, Swanton Abbott, Themelthorpe, Thurning, Thwaite, Tuttington, Whitwell, Wickmere, Wolterton, Wood Dalling, Wood Norton. In 1861 the population was 2,623; acreage, 4,308.

Parish Clerk, George White.

POST & MONEY ORDER OFFICE & POST OFFICE SAVINGS BANK.—Charles Clements, postmaster. Letters are delivered at 7.30 a.m. by Cromer mail from Norwich; dispatched at 5.20 p.m. Box closes at 4.40 p.m., but letters may be posted until 5.20 p.m. by the payment of an extra penny.

INSURANCE AGENTS:—

Atlas, Robert W. Parmeter, Cromer road
County Fire & Provident Life, George E. Burrell, jun., Red Lion street
European Fire & Life, Burrell & Son, Burgh road
General Life & Fire, William Starling, Red Lion street
General Haristorm, Jacob Middleton, jun., Market place
Life Association of Scotland, D. F. Roe
Liverpool & London & Globe, John Rix, School House lane
Manchester Fire, E. Rust
Norwich Union Fire & Life, Jacob Middleton, jun., Market place
Railway Passengers', J. W. Saunders, Cawston road
Reliance Mutual Life, B. S. Austin
Scottish National, G. H. Clarke, Market place
Scottish Union, Goddard Nicholson, Red Lion street

PUBLIC ESTABLISHMENTS:—

County Court, Thomas Jacob Birch, esq., judge; Jonathan Townley, treasurer; Thomas Keralake, high bailiff;
 William Henry Scott, esq., registrar; George Elden Burrell, jun., bailiff
Inland Revenue Office, Black Boys hotel, Market place;
 John Beale, officer
Union Workhouse, William Starters, master; Mrs. Harriet Starters, matron

Gas Works, Henry Kent, manager
Reading Room, Market place, Harry T. Mileham, sec
Superintendent Registrar, William Henry Scott, esq
Registrar of Births & Deaths & Relieving Officer, John Wright, Buxton
Stamp Office, Charles Clements, distributor, Market place
Police Station, Jonathan Chambers, superintendent, Blickling road

SCHOOLS:—

National (boys & girls), John Rix, master; Mrs. Mary Ann Rix, mistress
National Infant, Miss Virtue Staff, mistress

POSTING HOUSE.—*Black Boys hotel*

CONVEYANCE TO:—

CROMER.—The *Express* (coach), from the 'Black Boys,' at 6.20 in the evening, to the *BelleVue hotel*; the *Ocean* (coach), from the 'Black Boys,' at 6.15 p.m. Mail omnibus from 'Red Lion,' at 7.15 a.m. daily, sundays excepted, returning at 5 p.m.

NORWICH.—The *Express* (coach), from the 'Black Boys,' at 9 a.m.; the *Ocean* (coach), from the 'Black Boys,' at 9 a.m.; *Prince of Wales* (coach), leaves the 'Red Lion' every saturday at 9 a.m. returning from the 'Duke's Palace,' Norwich, at 5 p.m. Mail omnibus from 'Red Lion' at 5.20 p.m. to the 'Duke's Palace,' arrives at 6.45 p.m. Omnibus from 'Red Lion,' at 9 a.m. to 'Duke's Palace,' daily. A van leaves the 'Red Lion,' on saturday at 8.30 a.m. returning from the 'Duke's Palace' at 4.30 p.m.

Navigation Company, William Henry Scott, esq. clerk. Wherries to & from Yarmouth daily, Messrs. John Mayston & Robert Margetson, proprietors

CARRIERS TO:—

ALBOROUGH.—Homer, from the Dog inn, on monday, wednesday & saturday

BECKHAM.—Field, from the Dog inn, on friday

CROMER.—Puxley & Durrant, on saturday

HOLT.—Joseph Puxley & Richard Fiddy, from Dog inn, wednesday & saturday

NORWICH.—Robert Margetson, from his house, monday, wednesday, friday & saturday; & Fiddy & Tyrrell, on tuesday & friday from the Dog inn

PLUMSTEAD & SAXTHORPE.—Tyrrell, from the Dog inn, on tuesday & friday

PRIVATE RESIDENTS,

Bacon Mrs. Cromer road
 Bidwell Henry, esq
 Blyth Miss, White Hart street
 Bond Mr. William Spurrell, Burgh road
 Brown Miss
 Butler Mrs. Millgate street
 Clarke Mr. George, Cawston road
 Colby Miss
 Cook Mrs. Terrace
 Copeman Miss
 Copeman Thomas, esq. Norwich road
 De-la-fosse Rev. Augustus Newland, M.A. [curate], Vicarage
 Elvin Mrs. White Hart street
 Ernuin Harold Augustus, esq. Post Office street
 Forster William, esq. Market place
 Goulder Mrs. White Hart street
 Gunton George, esq
 Gunton Miss
 Harford Miss, Post Office street
 Harley Rev. Timothy [Baptist], Cawston road
 Harrod Mrs. Burgh road

Hillman Mrs. Heydon road
 Hunt Mrs. Paradise house
 Jodrell Mrs. Commercial road
 Kidd Mrs. Carr's corner
 Little Frederick, esq. Millgate
 Morton Richard, esq. Bushey place
 Nobbs Miss, Post Office street
 Parmeter Robert William, esq. Cromer road
 Pike Mrs. White Hart street
 Rackham Miss Mary
 Rawlinson Mrs
 Roper Mrs. Norwich road
 Saunders, John Warner, esq. Cawston road
 Saunders Mrs. Heydon road
 Scott William Henry, esq. Norwich rd
 Seppings Miss, Cromer road
 Sewell Mrs. Terrace
 Shaw Misses, Terrace
 Smith Fredk. Parsons, esq. Market pl
 Walpole Miss, Lodge
 Warnes John Henry, esq. Bolwick hall
 Wicks William Rice, esq. Millgate st
 Wrench Mr. Benjamin, Cromer road
 Young Miss, Millgate street

COMMERCIAL.

Abbs William, baker, Church hill
 Ayton Harriet (Mrs.), dress maker, Market place
 Bartram Robert, builder, Millgate street
 Beals John, inland revenue officer, Schoolhouse lane
 Bird Joseph, beer retailer, White Hart street
 Bird Stephen, bricklayer, Cawston road
 Blunderfield Mary Ann (Mrs.), grocer & draper, Market pl
 Bower George, secretary to savings bank, Market place
 Breese James, tailor & draper, Red Lion street
 Breese Rose (Miss), ladies' school, Poplar cottage
British & Irish Magnetic & Submarine Telegraph Co.
 Norwich road
 Bullock Brothers, millers, maltsters & corn merchants,
 Millgate
 Bunn Henry, shopkeeper, Post Office street
 Burrell George Elden & Son, auctioneers, valuers & land
 agents, Burgh road
 Burrell & Tuddenham, builders & cabinet makers, Burgh rd
 Burrell Ellen (Miss), ladies' school, Burgh road
 Burrell George Elden, jun. agent to the Norwich Wine Co.
 Pigar merchant & house agent, Red Lion street

 Burton George, blacksmith, Red Lion street
 Burton John, blacksmith, White Hart street
 Burton William, shopkeeper, White Hart street
 Butler William, blacksmith, Cawston road
 Carver William, timber merchant, Burgh road
 Case James Lee, farmer, Heydon road
 Chambers Jonathan, superintendent of police, Blickling rd
 Chapman & Roe, coach proprietors, Red Lion street
 Chapman John, butcher, Red Lion street
 Clare Edward, builder, Red Lion street
 Clark James, farmer, Post Office street
 Clark John Secker, currier & leather cutter, Cawston road
 Clark Richard, farmer, Spa
 Clarke George Herbert, dispensing chemist & dentist,
 Market place
 Clements Charles & Son, printers, booksellers & stationers,
 Market place
 Connard Thomas, watch maker, Market place
 Cook Robins, farmer, Bolwick
 Cooper John, *Red Lion inn*, Red Lion street
 Cooper Robert, baker, Market place
 Copeman Frederick, miller & corn merchant, Steam mill

 Cornish James, ironmonger, Market place
 Culley Benjamin, bricklayer, Cawston road
 Dale Robert, hair dresser, Red Lion street
 Daniel Thomas, shopkeeper, White Hart street
 Davison James, miller, Cawston road
 Denny John, veterinary surgeon, Dunkirk
 Duffield James, tailor
 Easton Robert, *Anchor*, Millgate
 Edwards John, china dealer, Red Lion street
 England Wallace William, grocer & draper, Red Lion street
 Feek Dick, *New inn*, Red Lion street
 Firmage John, shoe maker, Cawston road
 Pitt John, watch maker, Red Lion street
 Forster William, solicitor, & clerk to the magistrates,
 Market place
 Foxall Thomas, shoe maker, Cawston road
 Frankland James, harness maker, Red Lion street
 Freeman John, *Stonemasons' Arms*, Millgate
 Frostick James, farmer

Garner Henry, *Black Boys commercial inn & posting house*, & hearse & mourning coach proprietor; an omnibus for private families, Market place
Gas Works (Henry Kent, manager)
 Glistler William, carpenter, Cawston road
 Gotterson Thomas, carpenter, Cromer road
 Greenwood Charles, farmer, Burgh road
 Gurneys' & Co. bankers (Jacob Middleton, jun. manager), Market place; draw on Barclay, Bevan & Co. London
 Hatcher Jane (Mrs.), dress maker, Red Lion street
 Horstead John, bricklayer, Post Office street
 Howes Matthew, shopkeeper, White Hart street
 Howes Robert, veterinary surgeon, Cawston road
 Hubbard Stephen, plumber &c. Red Lion street
 Ingate Lewis & Son, coach builders, Cromer road
 Ives George, farmer, Wood farm
 Johnson John, shoe maker, Post Office street
 Kent Henry, manager to the gas works, Millgate
 King William, corn merchant, Millgate
 Laxen Henry, saddler &c. Market place
 Laxen Richard, baker & confectioner, Red Lion street
 Lemon Benjamin, saddler &c. Red Lion street
 Lemon William, auctioneer, Red Lion street
 Little Frederick, surgeon, Millgate
 Loads James, shoe maker, Market place
 Loads John, shoe maker, Red Lion street
 Lomax William, hair dresser, Cawston road
 Maidstone Samuel, shoe maker, Post Office street
 Mann Robert, tailor & draper, Market place
 Margetson Robert, carrier to Norwich, & coal merchant, Red Lion street
 Martin John, blacksmith, Staith
 Mayston John, coal merchant, Cromer road
 Middleton John, shopkeeper, Millgate
 Mileham William, artist, Market place
 Miller Henry, shoe maker, White Hart street
 Miller Thomas, shoe maker, Market place
 Morton Richard, surgeon, Bushey place
 Moy John, beer retailer, Cawston road
 Newton Thomas, shoe maker, Market place
 Nicholls John, beer retailer, Millgate
 Nicholls John, gardener, Millgate
 Nicholson Goddard, chemist, Red Lion street
 Page William, grocer & draper, Market place
 Parmeter Robert William, solicitor, & clerk of the peace for the county, Cromer road
 Patrick Leonard, shoe maker, Pound road
 Patterson Peter, butcher, Norwich road
 Payne Thomas, farmer, Cawston road
 Payne William, shoe maker, Red Lion street
 Pert & Bradey, plumbers &c. Church hill
 Pert David, plumber &c. Post Office street
 Pike Robert, blacksmith, Red Lion street

Plumbly Charles, farmer, Cawston road
 Poll Frederick, sawyer, Millgate
 Poll Henry, beer retailer, White Hart street
 Poll Samuel, *Bull*, Red Lion street
 Postle Robert, farmer, Cawston road
 Powell Benjamin & Son, grocers & drapers, Market place
 Proudfoot Robert, shopkeeper, Red Lion street
 Punsher William, *Dog inn*, Norwich road
 Purdy James, fishmonger, Red Lion street
Reading Room (H. T. Mileham, sec.), Market place
 Richardson Elizabeth (Miss), ladies' school, Cromer road
 Sands James, butcher, Red Lion street
 Saunders John Warnes, surgeon, Cawston road
 Scott William Henry, solicitor, registrar of the county
 court, clerk to the Navigation Company, trustees of turn-
 pike road, board of guardians, commissioners for income
 & property taxes, Gas Company, Town Hall Company,
 burial board, Aylsham union assessment committee, &
 assessed tax commissioners for South Erpingham district,
 deputy coroner for the Duchy of Lancaster, & superin-
 tendent registrar, Norwich road
 Sexton Joseph, baker, Post Office street
 Shreeve Thomas, miller, Bolwick mill
 Skidmore Mary (Mrs.), school, Red Lion street
 Smith Frederick Parsons, surgeon, Market place
 Smith Lewis Hiram, corrector of weights, Millgate
 Smith Richard, horse dealer, Norwich road
 Smithson Zephania, hair dresser, Red Lion street
 Soame George, miller, Cawston road
 Soame Henry, farmer, Cawston road
 Soame John, surveyor, & registrar of marriages, White
 Hart street
 Starling William, basket maker, Red Lion street
 Stearman Frederick, tailor, Post Office street
 Stearman James, gardener, Cawston road
 Sutton John, tailor, Red Lion street
 Tatten George, farmer, White Hart street
 Thirtle Robert, shoe maker, Red Lion street
 Tipple George, machine owner, Millgate
 Tudman William, *Star*, Red Lion street
 Ulph John Hook, *Cross Keys*, Red Lion street
 Varden John Thomas, ironmonger, Post Office street
 Wade Charles, watch maker, Post Office street
 Ward George, gardener, Post Office street
 Warren Thomas, tea dealer, Market place
 Watson James, basket maker, Millgate
 Watson John, beer retailer, Post Office street
 Watts John, pork butcher, Post Office street
 Wells George, *Unicorn*, Post Office street
 Winterbourne James, millwright, Cawston road
 Wortley Stuart, chemist, Red Lion street
 Wright Frederick, plumber &c. Market place
 Wright Thomas, beer retailer, Dunkirk
 Wright William, boarding & day school, Commercial road

COMPETITION (SOLUTION)

Here it is! for all those who have been struggling to solve Peter Holman's puzzle in the last issue. The long awaited solution.

1	M	A	R	K	E	T	P	L	A	C	E	
2	D	R	A	B	B	L	E	G	A	T	E	
3	S	C	H	O	O	L	H	O	U	S	E	
4		P	O	U	N	D	L	A	N	E		
5		P	A	R	M	E	T	E	R			
6		C	R	O	M	P	T	O	N			
7		W	H	I	T	E	H	A	R	T		
8		C	A	W	S	T	O	N	R	O	A	D
9		Y	A	X	L	E	Y	S	L	A	N	E
10		B	U	R	G	H	R	O	A	D		
11		P	A	L	M	E	R	S	L	A	N	E
12		R	I	P	P	I	N	G	H	A	L	L
13		B	U	T	T	L	A	N	D	S		
14		C	O	D	L	I	N	G	S	L	A	N
15		N	O	R	W	I	C	H	R	O	A	D

FUTURE PROGRAMME

- May 7th. Day school on Aylsham buildings.
Starting 10am - Parish Room. £4
- June 16th. Gimingham visit - Evening outing to
Gimingham - own transport, leaving Market
Place 6.30 pm to view church, mill and
John of Gaunt's house. Guided tour
by Chris Barringer.
- August 15th. Archive Film show - Joint event with the
Norfolk & Norwich Naturalists Society.
Malcolm Freegard with some vintage film
of interest to Naturalists and historians
7.30 for 8pm at the Friendship Club.
- Sept 8th. Norfolk Commons - talk by Chris Barringer
again at the Friendship Club.
- Mid-Sept "300 years of Aylsham History" - date to
be decided. A series of 10 lectures on
the Parish Archives. Probably Monday
afternoons.
- Sept 24/25 Norfolk History Fair - see this issue
for details.
- October A.G.M. (Details later)
- March 16th. '89 Talk on Workhouses
by Mrs Lody.

--oo0oo--