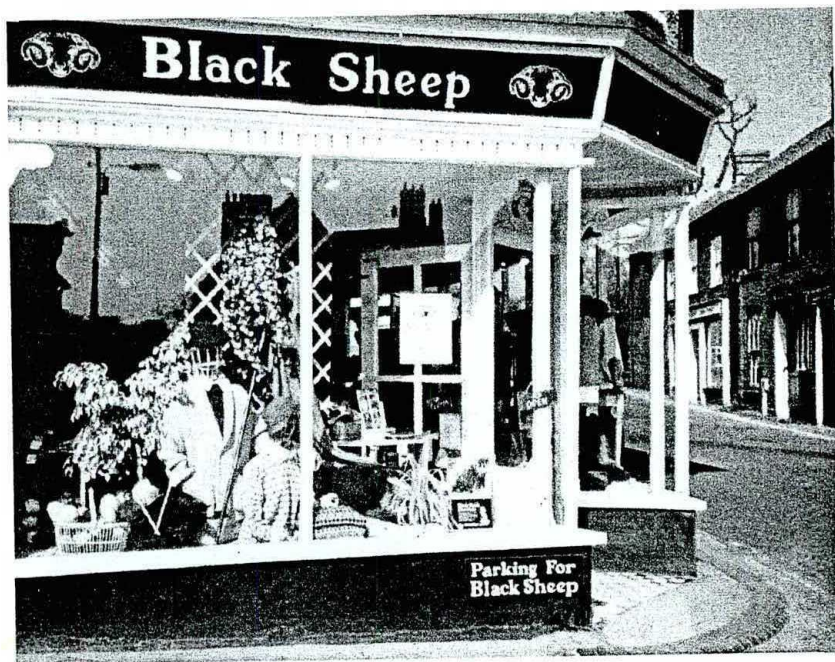


AYLSHAM LOCAL HISTORY SOCIETY



Vol. 6 No.10

June 2002

The **JOURNAL & NEWSLETTER** is the Quarterly publication of the Aylsham Local History Society. It is published each March, June, September and December, and is issued free to members. Contributions are welcomed from members and others.
Contact:-

EDITOR: Tom Mollard, Flint Cottage, Calthorpe Rd. Erpingham. Norwich
NR11 7QL. Phone Cromer 761638
mollard.tom@talk21.com

CHAIRMAN: Peter Holman
Aylsham 733434

SECRETARY Betty Gee
Aylsham 734834

CONTENTS

Aylsham Rainfall, by Ben Rust	291
David L. Walker (obit.).....	293
Society News	295
Diary Dates	299
<i>Local History Magazine</i>	302
Norfolk Turnips	302
Tudor Heraldry in Erpingham Church, by Ron Fiske	303
A Norwich walk, by Carrie Miller.....	306
More about the Workhouse, by Joy Lodey	307
Aylsham in 1922 [Kelly's Directory].....	309

COVER ILLUSTRATION

The Black Sheep Shop, Penfold Street. Where do we park?



AYLSHAM LOCAL HISTORY
SOCIETY

JOURNAL & NEWSLETTER

Vol. 6

No. 10

AYLSHAM RAINFALL

Ben Rust

Since my last report in 1991 there have been six wet years, three dry years and one of average rainfall. The last four years [1998-2001] have all been well over average rainfall. This is the first time since 1922-25 that there have been four consecutive wet years. So the prospects for 2002 are good for a below average rainfall.

Heavy rainfall during October 11 - 13th 1993 caused severe flooding in the Bure valley, similar to that of 1912, 1981 and 1987. Mash's Row was flooded; water was running across the road on to the Staithe. Nearly four inches of rain fell in the three days.

Further heavy rainfall occurred during August 28th and 29th. 1996 - nearly four inches, but this had been preceded by a dry period so there was no severe flooding. 6.07 inches of rain fell during June 1997, but no flooding because this was spread throughout the month. This is the highest monthly rainfall recorded since December 1965, and yet 1997 was a very dry year, total rainfall being 22.42 inches - well below average.

As stated already, the last four years [1998-2001] have all been above average in rainfall. There has been no severe flooding of the Bure valley, because no heavy rainfalls have occurred. The most noticeable fact is the number of wet days recorded each month.

At the time of writing, April 18th 2002, there has been very little rain for 28 days. Maybe we can look forward to a year with below average rainfall. A good start has been made.

Over a 100 year period, the average annual rainfall in Aylsham is 25.91 inches.

YEAR	WETTEST MONTH	DRIEST MONTH	TOTAL RAINFALL
1992	November 3.83	February 1.0	26.91
1993	October 5.86	March 0.86	32.72
1994	August 3.57	November 0.73	26.06
1995	January 3.78	October 0.36	22.68
1996	August 4.92	April 0.30	21.43
1997	June 6.07	January 0.29	22.42
1998	April 4.87	February 0.36	29.45
1999	August 4.53	February 1.58	31.54
2000	April 4.24	June 0.79	29.99
2001	September 4.59	December 1.54	34.20

-- ooOoo---

DAVID L. WALKER



On Sunday March 3rd. 2002 one of our members, David Littlejohn Walker died peacefully at his home in Aylsham at the grand old age of 101. David was a retired solicitor who had lived and worked in the town. He was one of the original members of our society, and was there from the very start. He was the ideal person to be a member of a local history society having a wide knowledge of the history of the town and of so many of its inhabitants.

In his later years frailty prevented him from joining in most of the activities of our society, and so he might not be so well-known to many present members who never had the chance to meet him. Nevertheless, he maintained his membership throughout and was always interested in our *Journal*. He was more than just interested. Over the years he supplied me with countless snippets of Aylsham's history, which all appeared later in the *Journal*. I think he had a sharper awareness of what would go down well in the *Journal* than I had! He even had something ready to appear in the very first issue when I was even shorter of material than I am now. I have reprinted that item in the current issue as a reminder of him.

I have always been grateful for the many pieces he has supplied me with. I am equally grateful for the opportunity I was given to meet him and sit and talk with him over a cup of coffee. His knowledge of Aylsham was immense, and he will be missed for that amongst other things.

Tom Mollard

(A fuller obituary of David also appears in the Parish magazine for May 2002)

Sadly, before we had chance to publish the above obituary, the death occurred of Olive Walker, David's wife, on April 17th. 2002 at the age of 91.

Archway House, 6 Burgh Rd. Aylsham

June 1985

Dear Editor,

You have asked me if I can tell you something in Aylsham's past which might interest your members. I think that the following might do so, particularly as it shows what great improvements have taken place in the care of injured persons (since the incident is said to have taken place near the turn of the century) and also we can credit the person concerned with great fortitude and endurance.

I was given the story some years ago of an Aylsham blacksmith working on his own premises. He was trying to raise some heavy object with the aid of a long iron bar used as a lever. The bar slipped and came down sharply on his thigh, breaking the bone. I am told that this is one of the most painful of fractures. I asked what happened next, and was told that the smith got his striker to load him on to a barrow and wheel him home. The barrow would have had an iron-shod wheel and the distance home was at least half a mile over a road not then smoothed by tarmac. A doctor was called later in the day and put the leg in wooden splints. Some six weeks later the smith was back at work!

Yours very sincerely

David L. Walker

[The above is reprinted from the first issue of our society's Journal in July 1985. It was the first contribution I ever received. David Walker died in March this year aged 101]

SOCIETY NEWS

Norfolk Record Office - On 21st. March Dr. John Alban, County Archivist, spoke on the work of the Norfolk Record Office. He spoke in general terms of the purpose of an Archive Office, and the principles which determine what should, or should not, be collected. He then went on, more specifically, to the work of the Norfolk Record Office and its contents.

The NRO ranks highly in the world of Record Offices because of the size and richness of its possessions. Norwich is blessed by having some of the most comprehensive records of its past history, both for the city and the county. There is always much behind-the-scenes work in any efficient organisation, and we saw pictures of these activities, together with illustrations of some of the more interesting contents. No account of the NRO would be complete without some reference to the disastrous fire of 1994, which could easily have destroyed the whole collection. Fortunately, nothing was destroyed by fire, but water damage has needed much restoration and treatment, and the amount of work involved in this has made NRO staff experts in the field of archive restoration.

Dr. Alban described how the salvaged Record Office re-established itself in its present temporary home in Anglia Square and is planning its future in a brand new Record Office already under construction on a site adjacent to County Hall. The new Record Office will be in a state of the art building which it will share with the East Anglian Film Archive, and the newly established East Anglian Sound Archive presently housed in the University of East Anglia. In its new home the Norfolk Record Office will be one of the leading Record Offices in the country.

Tom Mollard

The Ins and Outs of the Workhouse - On Thursday 25th. April, the society was treated to an enjoyable, concise and informative talk by Joy Lodey. Mrs Lodey's talk was based on the administration of the Poor Law and workhouses in Norfolk and Aylsham in particular. The Black Death of 1348 had resulted in great inflation, lawlessness and poverty.

A decree was issued that no one should give relief to able-bodied beggars. Those who did, and the recipients, were punished. In the Middle Ages charity for the poor and sick had been provided largely by the monasteries, but their closure by Henry VIII gave way to poor boxes being placed in churches for parishioner's donations to provide for *the deserving poor*. As these funds proved inadequate a rate was levied on property in 1597, and Overseers elected by the parish distributed these funds for the local poor. As each parish was responsible for its own paupers, Certificates of Settlement, with tight criteria, were required of the itinerant poor, so that they could receive aid only from their own parish.

In the eighteenth century, with its rising population and scarcity of jobs, the poor were cared for in various ways - 80% remaining in their own homes and receiving outdoor relief for clothing, medicine, fuel and food, for example. Lists of those in receipt of alms were kept. Attempts were made in some parishes to reduce the number of paupers by giving grants to enable families to emigrate abroad, or to the north of England where cotton and woollen industries were becoming established and in need of workers. These were taken up by the most enterprising. In Norfolk and Suffolk a policy of combining parishes to provide a 'House of Industry' e.g. Gressenhall, was an attempt at an economic solution. These Houses were to be self-sufficient, where families could stay together, receive lodging, farm-fresh food, clothes, medical and spiritual aid and education for young children. Work was found for the able-bodied on local farms, with domestic work in the workhouse for women and older children. The inhabitants were free to come and go as they pleased, and most stayed only a few months at a time.

In Aylsham the need for a workhouse was met in 1776 by the legacy of Thomas Cressey who bequeathed two houses and two acres of land in Millgate to be converted into Aylsham's first workhouse. Rules and regulations were established including the separation of sexes, but nevertheless, it had a good reputation. In 1783 it became a Gilbert Union Workhouse, combining with Buxton and Oulton workhouses, but used solely for those unable to work, and appointing a Master and Matron and 'Visitor'

The aftermath of the Napoleonic Wars resulted in high unemployment, and the high cost of living threw many agricultural

workers with their low wages, on the parish. As there was no central government funding, the Houses of Industry and Poor Relief were paid for solely by ratepayers of the parish who could not cope. A tougher stance had to be taken which resulted in the Poor Law Amendment Act of 1834. This abolished outdoor relief to the able-bodied who would now only receive relief inside the workhouse. Parishes were grouped into Unions with a central workhouse where life was to be made as disagreeable as possible by strict segregation of the sexes, a hard regime and the abolition of "comforts" (like tobacco). The old Aylsham workhouse was closed, but in the 1840s a new Tudor-style Union workhouse was built at a cost of £12,000 to accommodate 600 inmates with a residential staff of six to eight. There was to be a Master, Matron, Surgeon, Schoolmaster and Mistress, a porter and portress (often the cook). This still existing building was never full, usually only a third full and most inmates spent only a few months at a time there. The Guardians were often paternalistic and took a pride in their workhouse, providing good food, uniforms, medical aid and education. The 20th. century saw some relaxation of the strict rules in the workhouses. In 1908 old age pensions were introduced, and in 1948 the coming of the Welfare State saw the closure of workhouses. Aylsham workhouse became a Cottage Hospital and still remains to this day, whilst many of these distinctive buildings now fetch a great deal of money- The 'des. res' of the 21st century.

Although Mrs Lodey was at pains throughout to stress the economic, efficient and paternalistic management of the Poor Law and its institutions, it is not this that will stick in my mind when thinking about the 'workhouse'. It is the case of No. 42, Sam Gibson aged 7 who was deposited in Aylsham workhouse, exactly 100 years before my birthdate. Under the heading "How to be disposed of" he was to be collected by his mother at some future date. Subsequently he spent two months in Norwich Gaol for "cutting his shoes". These stark facts I gleaned from the book, *Admissions to the Workhouse 1803-36* displayed at the excellent exhibition of slides and archive material in the Town Hall on April 20th. We very much appreciated having the benefit of Mrs Lodey's twenty five years of knowledge and research, and her comprehensive display of photographs and documents for our perusal. With an excellent attendance of over 60 members and 16

visitors, an interesting local topic to discuss, a drink and a chat, our last evening meeting of the winter season was brought to a very satisfactory close.

Jean McChesney

Aylsham Past and Present - A fund raising exhibition was held on 20th. April, at the Town Hall, for the purpose of helping to raise finance for the programme of activities which will take place in June to celebrate the Queen's Golden Jubilee. This was arranged by the specially appointed Golden Jubilee committee. This was not a Local History Society event, although several of our members were actively involved. The event, planned in detail by Derek Lyons, was a whole day display of photographs, and other items from the town's archives. Two slide shows presented during the day, of illustrations of Aylsham past and present, attracted large audiences, and a steady flow of visitors came throughout the day. The display of Aylsham Association photographs proved very popular. A bookstall of local publications, mostly published by the society, did a good trade, and by the end of the day it was possible to make a good contribution from these sales towards the Golden Jubilee funds. This combined with a raffle, competitions, refreshments etc. and generous contributions from the public made it a very successful and enjoyable day.

Tom Mollard

Canon Jack Vyse - Shortly before Jack's death, on a visit to Norwich Cathedral, he expressed a wish that any of his books that I would like for the Cathedral Library should come to me. Following his death, and through the kindness of his son, Bill, I was able to choose several volumes which seemed suitable. Subsequently, again through the kindness of Bill Vyse who brought the books over from Kings Lynn, I have added to the library stock. A few titles have been put into the Aylsham Archives bookstock as they seemed more appropriate there. These cover selections from the Parson Woodforde diaries; Blickling Library, and the Walpoles of Wolteron.

In addition to the books I also received the remains of the "Barnwell Bundles". Recent members of the Society might not know what these are, but older members will recall the delights we enjoyed when first introduced to these. These were bundles of proof copies of printing work carried out by Barnwells in the early years of the 20th. century.

They had been parcelled up in monthly bundles and preserved unopened until Jack Vyse acquired them. There was great pleasure in opening them up with no knowledge of what they might reveal. Each bundle revealed items such as posters, leaflets etc. which made valuable additions to the Town Archives. I am finding several more items amongst these recent arrivals which will end up in the Archives, but it will take a little time before I have finished sorting them out. **TWM.**

DIARY DATES

Below is a selection of diary dates listed in the March to September 2002 diary published by the Federation of Norfolk Historical and Archæological Organisations. It is only a selection and includes those which might appeal to our members and which are close enough to Aylsham to be easy to get to.

June

- Thursday 13th. *Origins and early development of Norwich,*
by Brian Ayers **RS**
- Saturday 15th. *The Harringtons v. 'King' Stanley,* by Doug Weeks **R111S**
- Saturday 15th. *How to record and interpret a timber framed building,* by Adam Longcroft & Ian Hinton **UEA**
- Saturday 22nd. *How to record and interpret a medieval church,* by Ian Hinton **UEA**

July

- Wednesday 3rd. *The Archbishops of York and their heraldry,*
by Hugh Murray. **NHS**
- Saturday 6th. *Exploring Tudor and Stuart architecture,*
at Strangers' Hall. **UEA**
- Saturday 13th. *Understanding coastal change,* by
Keith Clayton **UEA**
- Saturday 20th. *A tapestry of Norfolk villages,*
by Chris. Barringer **BAHS**

September

Wednesday 4th.	<i>Heraldic matters outside Europe,</i> by G.D.F. Heathcote	NHS
Saturday, 22st	<i>An audience with Richard III,</i> by Michael Bennett (£3 book on 01603-664021)	RIIIS
Saturday, 28th.	<i>Invaders - Romans, Vikings and Normans,</i> Study Day at UEA (details 01603-664021)	TBT

KEY

BAHS	Blakeney Area Historical Society - meetings held in the Methodist Chapel or Blakeney Village Hall at 7.30pm (details: P.Peake, Crows Nest, Back Lane, Blakeney, NR25 7NP)
NHS	Norfolk Heraldry Society - meet at United Reform Church. Princes St. Norwich at 7.45pm (unless otherwise stated)
RIIIS	Richard III Society - meetings held at the Assembly House at 2.30pm £2
RS	Reepham Society, meet at Bircham Institute, Market Place 8pm
TBT	The Battlefield Trust - meetings held at the Assembly House at 2.30pm
UEA	UEA Extra-mural day schools at UEA unless stated otherwise. fees for all unless stated otherwise

---ooOoo---

and don't forget our own day classes:-

RAILWAYS IN THE NORFOLK LANDSCAPE

This Autumn term, Adrian Vaughan will deal with aspects of the railways and their effects on the countryside of Norfolk in ten weekly sessions starting on Tuesday 24th. of September at 2pm. at the Friends' Meeting House, Peggs Yard, Aylsham.

We hope that the course will be able to cover the many ways in which the planning and building of the new lines affected local life

through their heydays to their decline and their ultimate closure.

Adrian Vaughan has much knowledge of these matters, and will bring a deep understanding of the subject to the class.

*Further information from Peter Holman, Class Secretary.
3 Forster Close, Aylsham NR11 6BD 01263-733434*

VISITS

By the time you read this, the visit to Sutton Hoo will have taken place on 23rd. May. We have a visit planned for Wednesday, 10th. July to Great Yarmouth's historic South Quay, with four or five museums to choose from. Please read the circular enclosed and return the slip if you are interested AS SOON AS POSSIBLE. The Committee is also considering a visit to the Norfolk Record Office in the Autumn.

Betty Gee. Secretary

Our membership Secretary for several years, Sheila Mollard, will be retiring at the AGM in October. We are very grateful for her efficient and friendly service to old and new members.

We should also like to have a member co-opted on the Committee, to take responsibility for organising visits next year.

Please consider whether YOU could serve the society in either of these capacities, or as a co-opted committee member. You may telephone me on 01263-733434 or the Secretary, Betty Gee, on 01263-734834

Peter Holman. Chairman



NORFOLK

Aylsham Inns and Public Houses: a history by Elizabeth Gale A.L.H.S. 2001

Aylsham Local History Society is obviously very active and publishes occasional papers such as *Aylsham in 1821; the population of Aylsham* recorded by William Morris, and books such as the present one, and *Memories of Aylsham 1851-1937* by William Starling, published in 2000. A list of their publications is available.

(see left)

A welcome plug for the society's publishing programme, which appeared in "*Local History Magazine*" No.89 for January/February 2002

This is a national publication which should make our publications more widely known. Not only is it a very discerning magazine, it also contains some very interesting articles.

You can learn more about it from our Vice-Chairman, Geoffrey Gale

another fishy story . . .

From Norfolk & Norwich Notes & Queries 1904

The agriculturalists of Norfolk were justly proud of their turnips and sometimes adopted very remarkable methods to emphasise the dimensions of their roots.

In November 1828, John Shephard drew from his land at Erpingham a turnip which weighed 23lb. and measured 42 inches in circumference. He ordered the root to be carefully scooped out, and placed within it the following fish:-

a pike weighing 5lb. and another of 3lb.
a perch of 3lb. and another of a pound
a tench of 2lb. and another of a pound, and
an eel of 2½lb. or, in all 17lb of fish.

The turnip with its contents was sent as a present to a Mr. Callop, a surgeon residing in Great Surrey St., Southwark

Reproduced from the EDP of 23 Feb 2002

TUDOR HERALDRY IN ERPINGHAM CHURCH

Ron Fiske

The following note, which describes the heraldry in the church c1575, is transcribed from Robert Kemp's Ms. which is in the British Library. The copy from which it is transcribed is not too clear, and sometimes Kemp's hand is difficult, but there is no doubt about the arms which he blazons. The drawings and the information in square brackets has been added.

Erpingh^m church in the Chancell

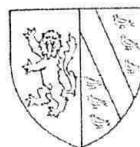
DAMME & JERMYE Sable a chevron ermin inter 3 dolphins or and sydeth Argent a lyon rampant gardant goulis langued and armed azure.



BREAUSE Azure semee floure de luces a lyon ramp^t gardant or [1]

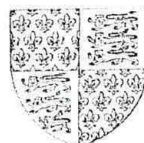


JERMYE et MOUNTNEY Argent a leopard rampant gardant goulis arm^d sydeth Azur a bend inter 6 martlets or All these in the chancell windows very fair



on the northe syde of the chancell

ARMA ANGLIE Semey floure de luces or a'frette azure & sydeth Goulis 3 leopards passant gardant or a'qartelle



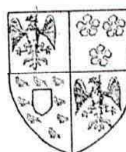
**[ST. BENET'S
ABBEY]**

Sable a crosier staffe inter 2 crownes or
on the sinister pte. of the scotcheon a
dext. hand argt.



**PHILLIPS
& BARDOLFE
& ERPINGEHAM**

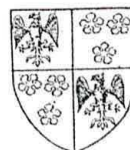
Quartelle goulis et argent on the first an
eagle displayed or and quartereth Azure 3
cinque foiles et verte an escocheon inter
an urle of martlets argent The laste as
the firste



On the southe syde of the church

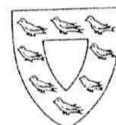
**PHILLIPS &
BARDOLFE**

Goulis et argent quartelle on the first an
eagle displayed or who quartereth Azure
3 cinque foiles or



ERPINGHAM

Verte an orle of martelets and
a scotcheon argent



On the roof of the church
Phillips et Bardolfe in syxe(?) severall scocheons

Erpingham also as manie

On a fare grave stone in brasse where lyeth the bodie of Sir John de Erpingham in complete armour his hanger(?) and belt all gylte his spurres also restinge his feete on the bodie of a lyon his hedde restinge on his gauntlet(?) having onlie two bare (?) simple scucheons of his name. The toombe bordered aboute with an Inscription. *Hic Jacet Johannes de Arpingham miles Dne istius villa qui multa bona fecit tempore vite suae* having at the corner of the stone fowre doves all silver with crownes having mitres or sceptres in their porwes(?) [2]



In the window of the steeple

WINTER

Or et sable cheke a fess argent'



Notes:

[1] There are a variety of arms for Brews. The lion is not normally guardant

[2] This inscription is different to that given in the "Chorography of Norfolk" c1600 (p.174) In particular, there is no date of death. This coupled with the ambiguity raised by Walter Rye ("Norfolk Families") invites further inquiry. Without the date it

might be he was a later Sir John? The description of the corner pieces (interpreted in the drawing) do not compare very well with the figures on the surviving brass, usually account symbols of the Evangelists.

---ooOoo---

A NORWICH WALK

Carrie Miller

"Come gather round and hear me well, I have a shocking tale to tell of ghosts, witches and evil talk. Do you dare join me on my walk".

Well not me personally, but ghostly 'Dave' from Wymondham. How many times have you been to Norwich, but not known of its haunts? Do you know about the Maddermarket monk? Do you know where the most haunted part of Norwich is? Do you know where we used to duck our witches and burn our Lollards? If you don't know what a Lollard is, all will be revealed on the walk.

The Norwich city *Ghost and Horror walk* starts at the Adam & Eve pub in Norwich at 7.30pm every Tuesday and Thursday from April to October. I have been on the walk twice. Not only is it a ghost tour, but an historical one too. Although the tour is true and genuine, a little bit of fun is added to make the tour more exciting. So be careful, as you might see the ghost of Lord Sheffield or the Lady in Grey!

For more details check the Evening News or phone Dave on 01953-605573 (day) or 01953-607262 (evening) Have fun!

Carrie Miller

---ooOoo---

MORE ABOUT THE WORKHOUSE

[Following on from her talk on Workhouses, Mrs Lodey wrote to add to her views on Charles Dickens's portrayal of workhouses in his novels - a point which had been raised at the meeting]

Regarding *Oliver Twist* . . . Dickens published this in 1837, only a year after the Poor Law Union workhouses came into effect. His portrayal is considered to be of the earlier regime in Wapping workhouse, rather than a rural workhouse.

M.A. Crowther in *The Workhouse system 1834-1929* says, "yet Dickens was a journalist as well as a novelist, and his writings provide two separate views of the workhouse. He concluded that Wapping was as well and kindly run as it could be, given inadequate buildings and the poverty of the local ratepayers. His suggestion was for the richer sections of London to contribute towards the expenses of the poorer . . . he was apparently prepared to accept that the workhouse could be improved, not simply abolished. Yet neither the symbolic workhouse in *Oliver Twist* nor the actual Wapping workhouse is 'typical' of a Poor Law which produced many diverse institutions."

Crowther continues: "For many years workhouses had to combine the functions of schools, asylums, hospitals and old people's homes, as well as being the last refuge for the homeless and unemployed. It cannot be claimed that these duties were always effectively performed, but it was the workhouse which provided the experience of managing the more specialised state institutions of today."

As Ann Digby says in the opening sentence of *Pauper Palaces*, her excellent book on Norfolk workhouses, "Just as *Oliver Twist* has come to represent the pauper, so the workhouse has come to symbolize the Poor Law. These images of the modern system of English Poor relief reflect popular mythology, rather than historical reality."

Even today, former workhouses aiming to attract tourists have a tendency to play on that mythology. They seldom explain how their finance was dependent on local ratepayers. Nor do they explain that one of the reasons why 'respectable' people feared the possibility of being sent there, was because they did not wish to mix with those they would not normally associate. Unfortunately, some of our forbears were not always

as 'clean and godly' as we fondly imagine, and despite the obligatory disinfectant bath and Sunday service, their behaviour could give offence to other inmates as well as the staff. For example, one of the reasons unmarried mothers (of whom there was usually quite a high proportion often with several children, not necessarily by the same father) were often separated from 'respectable women', was to avoid the possibility of them giving offence or being a bad influence on younger women, and some had to be separated on health grounds.

Books on workhouses usually refer to the 'Andover scandal' where some of the men were found to be gnawing the bones which they were employed in crushing for fertiliser. Undoubtedly conditions at Andover were cruel, and some of the men, particularly those who had been disciplined for misbehaviour, by a reduction in diet, had gnawed bones from the kitchens of the better off because of the meat on them and the marrow in them. But it is seldom explained that once this scandal came to light, the Poor Law Commissioners promptly prohibited bone-grinding as a means of employment in all workhouses. As Anne Digby says in *The New Poor Law in the Nineteenth century*, "the drama and publicity which surrounded the Andover workhouse has had the effect of giving it a disproportionate importance in any evaluation of life in the rural workhouse. Many country workhouses were indeed run on relatively humane lines, and many of the contemporary stories of workhouse cruelty published in *The Times* and elsewhere, have been shown to be hostile propaganda which was unsubstantiated by factual evidence."

Fortunately, in-depth local research is now being done in several counties, and so far the general conclusion seems to be that the workhouse was not as bad as it has been painted, and that is certainly the impression I have gained from my studies of Norfolk's parish workhouses, Gilbert Union workhouses, Houses of Industry and Poor Law Union workhouses, and in several conversations I have had with one-time inmates or their relatives. I hope that having seen some of the evidence and heard the views of other writers besides myself, you too will help set the record straight.

Joy Lodey.

---ooOoo---

AYLSHAM in 1922

(from Kelly's Directory of Norfolk 1922)

AYLSHAM - mentioned in Domesday as "Elesham", is a market and union town, head of a county court district and parish on the banks of the River Bure, which is navigable hence to Yarmouth; having a station on the Great Eastern Railway and another on the Midland & Great Northern Joint Railway, and is 12 miles north from Norwich, 7 west from North Walsham and 125½ from London. In the Northern division of the county, South Erpingham Hundred and petty sessional division, rural deanery of Ingworth (South Division), archdeaconry and diocese of Norwich.

The town is lighted with gas, supplied by the Aylsham Gas Co. Ltd. There is no water supply except from wells. The church of St. Michael is a building of flint in the Decorated and Perpendicular styles, and was erected c1380 by John of Gaunt, Duke of Lancaster, the court of whose duchy was once held in this town. It consists of a chancel with aisles and vestry, clerestoried nave of six bays, aisles, transepts, south porch with parvise, and an embattled western tower with crocketed pinnacles and a small spire, and containing a clock and 10 bells, re-hung, and the belfry repaired in 1890 at a cost of £285. The chancel retains three sedilia and a double piscina, and there are also piscinae in the south aisle and the south transept. The font is enriched with bas-reliefs of the emblems of the four evangelists, the instruments of the Passion, and the arms of the Duke of Lancaster, with other armorial insignia. Of the rood screen, erected in 1507 principally at the cost of Thomas Wymer, worsted weaver, only the lower part now remains and is adorned with painted figures of apostles and martyrs, and has an inscription in Latin to Thomas Wymer and Joan and Agnes, his wives. The remains of the former arcading of the screen are now incorporated in the reredos, constructed out of carved wood from various parts of the church.

The tomb of Wymer, with brass effigy in shroud and the date 1507, is in the church. Here is also a brass, with effigies as skeletons in shrouds, to Richard Howard, citizen and Sheriff of Norwich, who in

1488, built the church porch, and died 13 January 1499, and to Cecilia his wife. There are other brasses to Thomas Tylson, B.A., rector c1490, with effigy in almuze and scrolls, and to Robert Farman and Katherine, his wife, c1490, and there are effigies of a man and his wife, much worn. The church also contains monuments to the families of Jermy, Drake, Wrench, Norgate and Rushburgh. There is a monument, somewhat mutilated, to John Jegon S.T.P. Bishop of Norwich from 1602, who died 13 March 1617.

The east window, the tracery of which has been restored, is decorated with stained glass, placed in 1842-43, and representing apostles with various devices, and the armorial bearings of the Hobarts, Earls of Buckinghamshire; those of the See of Norwich, impaling Stanley; the Duchy of Lancaster, and others. There is another stained window to eight former vicars, and one containing some beautiful specimens of old glass, inserted at the expense of the late Rev. E.T. Yates, a former vicar, together with the armorial bearings of his family, and of S. Pitman, Esq, the lay impropiator of the parish, and the Dowager Lady Suffield.

The old organ was presented by the Rev. E.T. Yates, who also contributed to the restoration of the church in 1852, but a new organ was provided in 1911 at a cost of £1200. The pulpit dates from about 1600. The eagle lectern is modern. There were once several chantries in this church, one of which was founded 8 July 1534 by Robert Jannys, who also founded the Free School. The communion plate includes a chalice and paten of 1567, besides other pieces of later date. In a recess in the churchyard is the grave of Humphry Repton, the celebrated landscape gardener, who died 24 March 1818. There are 950 sittings. The register dates from the year 1653. The living is a vicarage, net yearly value £480, including 5 acres of glebe, with residence, in the gift of the Dean and Chapter of Canterbury, and held since 1888 by the Rev. John Gurney Hoare M.A. of Trinity College, Cambridge, Hon. canon of Norwich, rural dean of Ingworth (Southern Division) and surrogate. The Ecclesiastical Commissioners hold the larger portion of the great tithes

A mission room was built in 1890, on ground adjoining the churchyard, at a cost of £400, by the late Mr. B. Cook. There is a small Catholic church in White Hart St. The Baptist chapel is in White Hart

St. It was founded in 1791 and has sittings for 350 persons. There is a Primitive Methodist chapel on the Cawston Rd. and a Wesleyan Methodist chapel in White Hart St. a Reformed Wesleyan chapel in Millgate, and a Gospel Hall on the Cawston Rd. Adjoining Mr. Philip Shephard's residence is a Catholic chapel in which services are held occasionally.

The cemetery, of two acres, formed in 1855 at a cost of £600, was enlarged in 1900 by the addition of 1½ acres and is under the control of the Parish Council. The Town Hall in the Market Place, now the property of the town, is a structure of red brick and has a reading room and literary institute attached. The John Soame memorial pump was erected in 1912. A fire brigade is maintained here. Fairs are held yearly on March 23rd. and the last Tuesday in September. Cressey's charity of £31 6s yearly is given in doles, and is under the control of the parish council.

Abbot's hall, erected in 1610 by a member of the Wood family and now the property and residence of Philip Candler Shephard Esq. J.P. stands on the site of the ancient moated residence. The Manor House on the Norwich Road, the property and residence of Lt.Col. H. J. Bowman was built in 1608 by Bishop John Jegon, of Norwich, who died in the house in 1617. It contains some very fine old oak. There are four manors - Aylsham Lancaster manor belonging to the Marquess of Lothian; the Vicarage manor, belonging to the vicar; Sexton's manor, commonly called "Aylsham Wood" the property of the trustees of the late Thomas Copeman Esq. and Bolwick manor, belonging to W. S. Calvert Esq. The principal landowners are the Marquess of Lothian, Thomas Woods Purdy Esq., Mrs Louis Buxton, Philip Candler Shephard. Esq. Col. Benjamin Beckham Sapwell, VD, JP. Col. J. B. Stracey-Clitherow OBE, JP. and Lt. Col. E. R. Kerrison, RA C.M.G. OBE, JP, and a few smaller owners. The area is 4,305 acres of land and 25 of water; the rateable value £11,892. In 1911 the population of the parish was 2,627 including 12 officers and 137 inmates of the Poor Law Institution. Parish Clerk and Sexton of cemetery, George Neale, Cawston Road

Public establishments, local institutions &c

Post - M.O., T & T. E. D. office - Morton Sims Bruton, postmaster.

Wall letter boxes - Millgate St, Cawston Road, Cromer road,
Sankence, Drabblegate & Railway station (GER)

Justices of the peace for South Erpingham petty sessional division

Marshall, Major Henry Savill. Rippon Hall, Hevingham, Chairman.

Barclay, Joseph Francis. Old Hall, Aylsham

Bolton, Walter Henry. Oulton Hall, Aylsham

Buxton, Walter Louis, Bolwick Hall, Marshall.

Cheetham, James Crompton. Manor Ho. Cawston

Cook, Herbert. White House, Alby

Ducker, Charles. Tuttington

Kerrison, Lt. Col. Edmund Roger Allday, CMG, OBE, RA. Burgh
Hall.

Littlewood, Col. Harry. Erpingham Lodge

Orford, Earl of. D.L. Wolterton Park, Erpingham.

Sapwell, Col. Benjamin Beckham. V.D. Sankence, Aylsham.

Sewell, Philip Edward. Dudwick House, Buxton

Shepherd, Philip Candler. Abbotts Hall, Aylsham.

The Chairman for the time being, of the Aylsham Rural District
Council is an ex-officio Justice of the Peace.

Clerk to the Justices: Thomas Woods Purdy. B.A. solicitor, Market
Place.

Petty Sessions are held at the Town Hall every other Tuesday at 11.

The following places are included in the Petty Sessional Division:-

Alby-with-Thwaite, Aylsham, Banningham, Banningham Parva,
Belaugh, Blickling, Booton, Brampton, Burgh-next-Aylsham, Buxton,
Calthorpe, Cawston, Colby, Coltishall, Corpusty, Erpingham,
Hautbois Magna, Hevingham, Heydon, Ingworth, Irmington,
Itteringham, Lammas-with-Hautbois Parva, Mannington, Marshall,
Oulton, Oxnead, Saxthorpe, Scottow, Skeyton, Stratton Strawless,
Swanton Abbot, Tuttington, Wickmere & Wolterton.

Aylsham Rural District council

Meets at the Poor Law Institution, on Tuesdays alternately at 10.30am.

Chairman. William Case, Tuttington, Aylsham.

Clerk. Henry James Gidney, Old Bank House, Aylsham.

Treasurer. Henry Birkbeck, Barclays Bank Ltd. Aylsham

Medical Officer of Health. Herbert Hatfield Back. M.B. Lond.

M.R.C.S. Eng. Acle, Norwich.

Inspector of Nuisances, Harry W. Trotter, Sir Williams Lane.

Surveyor of Highways. Leonard J.Preston, Buxton Road.

Public establishments.

Cemetery. Henry James Gidney, Clerk.

County Court, held at the Town Hall, bi-monthly. His Honour C.

Herbert-Smith.LL.D, judge; Henry James Gidney, registrar and high

bailiff. The district comprises the following parishes:- Alby-with-

Thwaite, Aylsham, Alderford, Banningham, Barningham Parva,

Belaugh, Blickling, Booton, Brampton, Burgh, Brandiston, Buxton,

Calthorpe, Cawston, Colby, Coltishall, Corpusty, Erpingham,

Foulsham, Guestwick, Hackford, Hautbois Magna, Haveringland,

Hevingham, Heydon, Hindolveston, Ingworth, Irmingland,

Itteringham, Lammas-with-Hautbois Parva, Mannington, Marsham,

Oulton, Oxnead, Reephram-with-Kerdiston, Sall, Saxthorpe, Scottow,

Skeyton, Stratton Strawless, Swanton Abbot, Swannington,

Themelthorpe, Thurning, Tuttington, Whitwell, Wickmere,

Witchingham (Great) Witchingham (Little) Wood Dalling, Wood

Norton & Wolterton.

For bankruptcy purposes, this court is included in that of Norwich;

Harry Pearce Gould, 8 Upper King St. Norwich, official receiver.

County Police Station. Blickling Rd. Sergeant G. H. Bussey, 2

sergeants and 15 constables.

Parish Council; Harry F. Proudfoot, Clerk

Town Hall, Market Place, Harry F. Proudfoot, manager; Walter Sidney

Pooley, keeper.

The Cinema - Pinfold St. William Henry Lawrence, manager

Aylsham Union

Board days, Tuesdays fortnightly at the Poor Law Institution at
Aylsham

The Union includes the following parishes:-Alby-with-Thwaite, Aylsham, Banningham, Barningham Parva, Belaugh, Blickling, Brampton, Burgh-next-Aylsham, Buxton, Calthorpe, Cawston, Colby, Coltishall, Corpusty, Erpingham, Foulsham, Guestwick, Hackford, Hautbois Magna, Hevingham, Heydon, Hindolveston, Ingworth, Irmingland, Itteringham, Lammas-with-Hautbois Parva, Mannington, Marsham, Oulton, Oxnead, Reepham-with-Kerdiston, Sall, Saxthorpe, Scottow, Skeyton, Stratton Strawless, Swanton Abbot, Themelthorpe, Thurning, Tuttington, Whitwell, Wickmere, Wood Dalling, Wood Norton & Wolterton. The population of the Union in 1911 was 17,344, and in 1921 16,351. Area 69,341 acres, rateable value in 1921, £90, 692

Chairman. William Case, Tuttington.

Clerk to the Guardians. Henry James Gidney, Old Bank House, Aylsham.

Assistant Clerk, Edmund Dennis Browne, Burgh Rd. Aylsham.

Treasurer. Henry Birkbeck, Barclay's Bank Ltd. Aylsham.

Relieving & Vaccination Officers, Buxton District, Edward Robert Le Neve, Burgh Rd. Aylsham. Eynsford district, John Shephard, Reepham.

Medical Officers & Public Vaccinators, 1st District, Edward Verdon Perry OBE, M.R.C.S. Eng. L.R.C.P. Lond. JP. Reepham. 2nd. District. Marcus Camplin Moxham LSA London MRCS Eng. LRCP Lond., Alborough. 3rd. District. Ernest Douglas Wolff, L.R.C.P. Lond. M.R.C.S. Eng. Foulsham. 4th. District. Frederick Little M.R.C.S. Eng. L.S.A. The Orchards, Aylsham. 5th. District. Herbert Geo. Berry, MRCS Eng. LRCP Lond. Reepham. 6th. District. Augustus Charles Morton. M.R.C.S. Eng. LSA, The Beeches, Aylsham. 7th. District. Ralph Stuart Renton MC, MB, MD. Coltishall.

The Poor Law Institution, erected in 1849, is a structure of red brick in the Elizabethan style, erected to hold 619 inmates. Rev. Edward Dennis, chaplain. Augustus Charles Morton, medical officer, Ronald Victor Rylance, master, Mrs Mary Hester Rylance, matron.

Aylsham Registration District

Superintendent Registrar, Henry James Gidney, Old Bank House.
Deputy Superintendent Registrar. Edmund Dennis Browne, Burgh Rd.
Registrars of Births and Deaths; Eynsford sub-district. John Shephard, Reepham, deputy Mrs J. Shephard, Reepham. Buxton sub-district, Edward R Le Neve, Burgh Rd. Aylsham, deputy Mrs E. Le Neve, Aylsham.
Registrar of Marriages; Harry F. Proudfoot, Market Place, deputy, Harry W. Marjoram, St. Andrew's, Burgh Rd.

Public Officers

Assessor & Collector of the King's taxes, Harry Walter Marjoram, Burgh Rd.
Certifying Factory Surgeon. Frederick Little, M.R.C.S. Eng. Norwich Rd.
Clerk to the Commissioners of Taxes; Thomas Woods Purdy, Market Place.
Clerk to the Navigation Commissioners; Thomas Woods Purdy, Market Place.
Customs & Excise Officer, Archibald Charles Boast, Burgh Rd.
Town Crier; Harry F. Proudfoot, Market Place.

PLACES OF WORSHIP with times of services

St. Michael's church. Rev. Canon John Gurney Hoare M.A. vicar and surrogate, and Hon. canon of Norwich;
Catholic chapel adjoining Mr. Philip Shephard's residence.
Catholic. White Hart St.
Baptist. White Hart St. Rev. Thomas Smith

Primitive Methodist. Cawston Rd. Rev. Thomas Featherstone, The Manse Burgh Road
 Wesleyan Methodist, White Hart St. (Norwich, North Walsham and Cromer Mission)
 Wesleyan Reform, Millgate St. Rev. George Wright. Cawston Rd.
 Salvation Army, Hungate St.
 Gospel Hall, Cawston Rd.

Schools

A Free school was founded here in 1517 by Robert Jannys, mayor of Norwich in that year and endowed with £10 from the funds of King Edward VI's hospital at Norwich, but it is now merged in the present school.

Public Elementary, erected in 1848 for 130 boys, 130 girls and 104 infants. Frank F. Hodds, master. Miss A.M. Dunthorne, mistress. Miss G. Chapman, infants mistress.

Railway Stations

Aylsham (Great Eastern) Arthur William Finch, Stationmaster
 Aylsham Town (Midland & Great Northern Joint Railway) Thomas Crossby, stationmaster

Omnibus service from Norwich to Aylsham daily

Private Residents

Aldous, Mrs. Red Lion St.
 Barclay, Joseph Francis JP. The Old Hall, Blickling Rd.
 Barker, Arthur. Peterson's Lane
 Barker, Mrs. Oakfield Rd.
 Barker, Thomas Edmund. Burgh Rd
 Barnwell, Frederick Charles. St.Michael's Villas, Cawston Rd.
 Boffee, William John. The Lodge, Oakfield Rd.
 Bowman, Lt.Col. Henry James (late 95th. Derbyshire Regt.) The Manor House, Norwich Rd.

Brawn, Mrs J, Oakfield Road
 Browne, Edmund Dennis, Burgh Rd.
 Bruce, Stanley W. Fernleigh, Blickling Rd.
 Brundle, Albert, The Cedars, White Hart St.
 Clark, Mrs. James, Commercial Rd
 Crisp, Mrs. Oakfield Rd.
 Dester, Mrs. Oakfield Rd
 Edwards, Mrs. Burgh Rd.
 Featherstone, Rev. Thomas (Primitive Methodist) the Manse, Burgh Rd.
 George, Alfred R. Burgh Rd.
 Gidney, Henry Jas. Old Bank House

Gilbert, Brig. Gen. Arthur Roberts, Spratt's Green
 Gilbert, Misses. Cromer Rd.
 Gilbert, Mrs Clemence. The Dell, Heydon Rd
 Gillman, Mrs. St. Michaels Villas, Cawston Rd.
 Girling, Samuel. Livingstone House, Hungate St.
 Gooch, James. Yew Tree House.
 Gordon, Arnold. Woodbine Vil. Cromer Rd.
 Green, Philip. Oakfield Rd.
 Grigson, Rev. Edward. B.A. West Lodge Blickling Road.
 Hill, Mrs. Geoffrey, West Mount. Heydon Rd.
 Hoare, Rev. Canon John Gurney. M.A. Vicar, rural dean & surrogate.
 Ingate, Arnold. Cromer Rd.
 Ivens, Mrs. Crossways, Cromer Rd.
 Ives, Mrs. Market Place.
 Johnson, Major Harold. The Belt
 Kelly, John. Burgh Rd.
 Last, Robert Samuel. Pinfold St.
 Laxen, Albert Richard. Cromer Rd.
 Ling, John Elliott. Burgh Rd.
 Ling, William. Burgh Rd
 Little, Frederick. The Orchards, Norwich Rd.
 Lyon-Campbell, Mrs. Charles Albert, Sankence Lodge, Cawston Rd.
 Marjoram, Harry Walter. St. Andrew's Villa, Burgh Rd.
 Meadows, Misses. St. Michael's Villas, Cawston Rd
 Meale, Luther George. White Hart St.
 Mileham, Cyril. Bure Acre.
 Miller, Herbert. Church Terrace.
 Morton, Augustus Charles. The Beeches.
 Morton, Miss. Burgh Rd.
 Nott, Walter. Cawston Rd.
 Page, Alfred. Pound Rd.
 Page, Henry. Hill House, Heydon Rd.
 Palmer, Miss. Market Place
 Parr, Frederick William. Heydon Rd.
 Pooley, Richard. Pound Rd.
 Proudfoot, Harry Frederick. Wayside, Blickling Rd
 Purdy, Thomas Woods. B.A. Woodgate.
 Quantrell, Colin T. Market Place
 Rampling, Geo. Church Terrace.
 Rayson, Frederick. Cawston Rd.
 Robb, William. North Walsham Rd.
 Roe, Robert Leonard. Oakfield Rd.
 Rout, Fred. Church Terrace.
 Roy, Mrs. Gothic House, Hungate St.
 Rump, Mrs. Burgh Rd.
 Rust, Robert Leicester. Millgate House
 Sapwell, Col. Benjamin Beckham, V.D. J.P. Sankence, Cawston Rd.
 Sapwell, Benjamin Beckham jnr. B.A. LL.B. M.B. B.C. Cantab. The Grange, Cromer Rd.
 Sewell, Bertram. Bank House, Market Place
 Shephard, Miss E.A. White Hart St.
 Shephard, Philip Candler. J.P. Abbot's Hall
 Shreeve, Mrs. Commercial Rd.
 Smith, Rev. Wm. Thomas (Baptist)
 Soame, Mrs. St. Michael's Villas, Cawston Rd.
 Starling, William Frederick, Burgh Rd.
 Stoner, Edward Thomas. Burgh Rd.
 Stroud, Benj. Wm. Commercial Rd.
 Sutton, Miss. Cawston Rd
 Symons, Cecil Hearle. The Mount
 Tuttle, Walter Edward. Bankfield, Commercial Rd.
 Ward, Robert H. Burgh Rd.
 Woodcock, Roger Rose, Gresham, Church Terrace
 Wright Rev. Geo. (Wesleyan Reform) Cawston Rd.

COMMERCIAL

Early closing day, Wednesday

Ancient Order of Foresters, Court Pride of Aylsham. (R. Pooley, Sec.) Pinfold St. Anderson, Geo. T. Veterinary surgeon, Market Place	Atkins, James Harry. grocer Millgate St. Atkins, James Henry, wheelwright, Millgate Aylsham Gas Co. Ltd. (Robert L. Roe, Sec. Mark Taylor, manager)
---	---

Aylsham Motor Co. motor engineers, Red Lion St
 Aylsham Town Hall, (Harry F. Proudfoot, manager; Walter S. Pooley, keeper) Market Place
 Balls, Edward Charles, Unicorn PH & fishmonger. Hungate St.
 Barclay Pallett & Co. Ltd. millers (steam and water) and coal, coke, corn, flour and seed merchants. Dunkirk roller mills, Millgate watermill and M&GN station. Head Office, North Walsham.
 Barclays bank, (Bertram Sewell, manager) open 10-3 except Saturday, 9-12.30. Market Place. Draw on Head office, 54 Lombard St. London E.C.
 Barker, Thomas. ironmonger, Red Lion St.
 Barnwell, Frederick Charles, stationer, Market Place
 Beck, Mark. smith and machinist, Burgh Rd.
 Bertram Sewell, bank (branch) manager to Barclays bank
 Blackstone, William Henry. hairdresser, White Hart St.
 Blofield, William. butcher, Red Lion St.
 Blott, John, sec. Masonic lodge (Suffield Lodge) meets 3rd. Wed. every month, Black Boys Hotel
 Boast, Archibald Charles. customs & excise officer, Burgh Rd.
 Bond, James Flaxman, grocer, Millgate St.
 Brady & Pert, plumbers, Commercial Rd.
 Breese, James Thomas. tailor, Red Lion St.
 Briggs, George. pork butcher, White Hart St.
 Browne, Edmund Dennis. deputy superintendent registrar & assistant Clerk to the Union, Burgh Rd.
 Bruce, Stanley W. auctioneer & estate agent; agent for Bagshaw's manures, half-inch and dust bones, nitrate of soda, fish and other salts. Bank St. and dealer in modern and antique furniture, Pinfold St. periodical sales held at repository sale rooms, Pinfold St
 Buckingham, Frank Edward. Ph.C. chemist, Red Lion St.
 Case, Edward, farmer, the Manor House of the Duchy of Lancaster.
 Cemetery, (Henry James Gidney, clerk)
 Chamberlin, Emily (Miss) ladies school, see Reynolds & Chamberlin
 Cinema (The) William Henry Lawrence, manager, Pinfold St.
 Clarke, Ernest.. Anchor P.H. Millgate St.
 Clarke, George P. ironmonger, Market Place
 Coller, R. & Sons Ltd, corn and coal merchants, Great Eastern station and at Norwich
 Constable, Daisy. Miss. dressmaker, Burgh Rd.
 Cooper Bros, cycle agents Cawston Rd
 Cook, John Purdy, farmer Hungate St. farm
 Cooper, Thos, Wm. watch & clock maker, Red Lion St
 County Court (his honor C. Herbert-Smith LL.D judge. Hy. Jas. Gidney, registrar and High Bailiff), Town Hall
 Cripps, William. greengrocer, Millgate St.
 Cross & Co. corn, cake, coal, seed and manure merchants, Gt Eastern Station
 Dale, Edw.M. confectioner & pastry cook, Red Lion St.
 Dale, Robert D. hairdresser, Red Lion St.
 Dale, Miss Rose Emma, tobacconist, Red Lion St.
 Daniels, James F. Swan PH, Hungate St
 Daniels, Thomas F. farmer, Millgate St.
 Dester & Co. chemist, Market Place
 Doidge, David. beer retailer, Cawston Rd.
 Dove, Charles. builder, Sir William's Lane
 Dove, Percy, market gardener Sir Wms L.
 Ducker, Samuel, blacksmith. White Hart St.
 Durrell, George. farmer, West End Lodge, Blickling Rd.
 Dyball, John, shopkeeper, Millgate St
 Employment Exchange (W.E. Tuttle, branch manager) market place
 Ewing, John, fruiterer, Red Lion St.
 Field, Wm. monumental mason. Burgh Rd.
 Fish, James Wm. motor engineer Norwich Rd
 Frankland, Samuel Thos. ironmonger, Hungate St.
 Frostick, John. jobbing gardener, Peterson's Rd.
 Garrett, Edward. Black Boys family and commercial hotel & posting house. Market Place
 Gibbons, Jas W. confectioner, Red Lion St.

- Giddings, Arthur, baker, Butland Mill & Church Hill
- Gidney, Henry Jas. solicitor, commissioner for oaths & for taking acknowledgments of married women, Clerk to the Guardians and assessment committee of Aylsham Union, to Aylsham Rural District Council & to the Burial authority & superintendent registrar of Aylsham District, registrar and high bailiff of County Court, Old Bank House.
- Gladden, Elizabeth. shopkeeper, Hungate St.
- Gostling, Henry, farmer Buxton Rd.
- Gotts, Samuel, confectioner, Market Place.
- Hall, Charles, monumental mason, Millgate St.
- Hall, Miles. Red Lion Hotel, Red Lion St.
- Hogg, Walter F. Dog Hotel, Norwich Rd
- Holley, Edward. solicitor and commissioner for oaths, (firm Purdy & Holley)
- Horner, Frederick, R.S.S. blacksmith, Cawston Rd.
- Hubbard & Son. plumbers & painters, Red Lion St.
- Ingate & Mayow. coach builders, Cromer Rd. and Red Lion St.
- International Tea Co.'s Stores, tea dealers, Red Lion St.
- Jex, Bertie. marine store dealer, Cawston Rd.
- Jones, Arthur. market gardener, Buxton Rd.
- Keymer, James. carpenter, Hungate St.
- Kirk, Ernest. Cross Keys. P.H. Red Lion St.
- Larke, William Robert. outfitter, Red Lion St.
- Last, Robert Samuel. ironmonger, Market Place.
- Laxen, Albert Richard. saddler etc. Market Place.
- Laxen, Horace, baker, Red Lion St.
- Le Neve, Edward Robert. relieving and vaccination officer for Buxton District, Aylsham Union; and registrar of births & deaths for Buxton sub-district, Burgh Road.
- Literary Institution; (H.J. Gidney, President; H.W. Trotter, Hon Sec.) Market Place.
- Little, Frederick M.R.C.S. Eng L.S.A. surgeon; certifying factory surgeon and Medical Officer and public vaccinator 4th. district, Aylsham Union, The Orchards, Norwich Rd.
- Marjoram, Harry Walter. assessor and collector of taxes, deputy registrar of marriages, newspaper correspondent, St. Andrews Burgh Rd.
- Meale, Harvey. baker, White Hart St.
- Miller, A. Boot & shoemaker, Market Place.
- Miller, Thomas. apartments, The Limes, Burgh Rd.
- Morton, Augustus Charles. M.R.C.S. Eng. L.S.A. surgeon and medical officer and public vaccinator, 6th. district and Workhouse, Aylsham Union. The Beeches. TN2 Aylsham
- Moy, Mrs. George. Boot & shoemaker, Market Place.
- Moy, Jacob. see Tuddenham & Moy
- National Farmers Union (Aylsham branch) Harry F. Proudfoot, Sec. Market Place
- Neale, George, bricklayer, Cawston Rd.
- Norfolk Shire Horse Society Ltd. (H.F. Proudfoot, sec.) Market Place.
- North Walsham & Aylsham Agricultural Assoc. (H.F. Proudfoot, sec.) Market Place.
- Odd Fellows (M.U.I.O.O.F.) Marquis of Lothian Lodge, (R.L. Roe, sec.) meets at the Black Boys Hotel.
- Oliver, George. Stone Masons' Arms, P.H. Millgate St.
- Page, Henry, grocer & draper, Market Pl. & Hungate St.
- Partridge, Arthur, butcher, Millgate St
- Partridge, James Daniel. farmer, Red Lion St.
- Pask & Sons, tailors, Red Lion St.
- Payne, Henry. farmer, Woodgate.
- Peed, John MA Cantab. solicitor, Paradise House
- Pilch, James Richard. smith and machinist, Burgh Rd.
- Poll & Steward**, builders, contractors, wheelwrights, undertakers & english timber merchants; steam sawing done on reasonable terms, Pound Rd. saw mills
- Postle, Ernest, beer retailers, Hungate St.
- Preston, Leonard J. Highway surveyor to the Rural District Council, Buxton Rd.
- Pretty, George, grocer, Red Lion St.
- Proudfoot, Harry, assistant overseer and clerk to the parish council, registrar of marriages for Aylsham district; sec. to

- North Walsham, & Aylsham
Agricultural Association and the
Norfolk Shire Horse Society Ltd.
assistant overseer for Alby-with-
Thwaite; Blickling; Brandiston;
Cawston; Erpingham; Ingworth;
Itteringham; Wickmere & Wolterton.
Market Place
- Pumphrey, Albert Charles. beer retailer,
Dunkirk.
- Purdy & Holley, solicitors, Market Place.
- Purdy, Thomas Woods, B.A. solicitor &
commissioner for oaths (firm Purdy
& Holley) clerk to the justices, to the
Navigation Commissioners, and to the
Commissioners of taxes, Market Place.
- Reading Room and Library (H.J. Gidney,
president; H.W. Trotter, hon. sec.)
Market Place.
- Reynolds & Chamberlin, Misses. ladies'
school, Cawston Road.
- Roofe, James. grocer, Red Lion St. &
Cawston Rd
- Rought, William, gardener, Cawston Rd.
- Rout, Frederick Richard. boot & shoe
maker, Red Lion St.
- Sapwell, Col. Benjamin Beckham. V.D. J.P.
landowner and farmer, Sankence,
Cawston Road.
- Sapwell, Benjamin Beckham, jun. B.A.
LL.B. M.B. B.C. Cantab. physician
and surgeon, The Grange, Cromer Road.
- Sayer, William John. insurance agent,
Buxton Road.
- Shepherd, Philip Candler. J.P. M.R.C.S. Eng.
L.S.A. surgeon, Abbot's Hall
- Stearman, Miss Sophia. dressmaker,
Hungate St.
- Stevens, Arth. threshing machine prop.
Commercial Road.
- Stevens, Richard. threshing machine and
traction engine proprietor, Cawston
Road.
- Steward, Horace L. grocer, Norwich Rd.
- Stewart, William.** builder & wheelwright,
Cawston Rd
- Stoner, Edward Thomas. watchmaker, Red
Lion St.
- Suffling, James, coal dealer
- Sutton, Cornelius (Mrs) farmer, Stonegate
- Sutton, Hector. farmer, Bure Valley farm,
Burgh Rd.
- Sutton, Jesse. farmer, Spratts Green farm,
Burgh Rd.
- Swann, Stanley, greengrocer, Hungate St.
- Symons, Cecil Hearl MRCS Eng. & LRCP
surgeon and medical officer, The Mount
- Syrett, Barry, Ship PH White Hart St.
- Trotter, Harry W. Inspector of nuisances to
the Rural District Council, Sir Williams
Lane
- Tuddenham & Moy, builders, Town Lane
- Tuddenham, Mrs Frances M. butcher,
Cawston Rd.
- Tuddenham, Sidney. insurance agent,
Hungate St.
- Turner, Benjamin, painter, Hungate St.
- Tuttle, Arthur E. farmer, Rackhams farm,
Burgh Rd.
- Tuttle, Arthur Geo. fruit grower, Millgate St.
- Tuttle, Walter E. fruit grower, Commercial Rd
- Underwood, Henry William. hairdresser,
Red Lion St.
- Vincent, Geo. farm bailiff to Col. B.B.
Sapwell VD, JP Cawston Rd
- Wade, Harry. cycle agent. Pinfold St.
- Wade, Wallace. watch & clockmaker, Burgh
Rd
- Wade, Walter, builder, Ellisswicke. Blickling
Rd.
- Ward & George, grocers & drapers, Market
Place.
- Ward, Edward Albert. carpenter, Red Lion
St.
- Warne, Charles Henry, farmer, The Spa.
- Waters, Frederick Charles. farmer,
The Spa farm.
- Watts, David, grocer, Norwich Rd
- Wells, Arthur F. New Inn, Red Lion St
- White, Alfd. (Mrs.) saddler & harness
maker, Red Lion St.
- Williamson, Alfred, bootmaker, Commercial
Rd.
- Winterborn, Geo. millwright, Cawston Rd.
- Winterborn, Miss Milly, shopkeeper,
Cawston Rd.