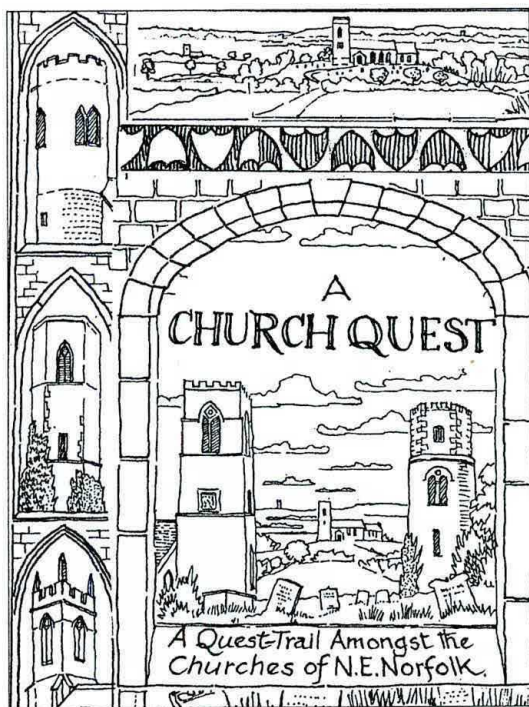


# AYLSHAM LOCAL HISTORY SOCIETY



Vol. 6 No.3

September 2000

The **JOURNAL & NEWSLETTER** is the Quarterly publication of the Aylsham Local History Society. It is published each March, June, September and December, and is issued free to members. Contributions are welcomed from members and others. Contact:-

EDITOR: Tom Mollard, Flint Cottage, Calthorpe Rd. Erpingham. Norwich  
NR11 7QL. Phone Cromer 761638

CHAIRMAN: Peter Holman  
Aylsham 733434

SECRETARY Betty Gee  
Aylsham 734834

---

## CONTENTS

Enclosures, by Ursula Warren .....	67
Abbot's Hall and the Shepherd family, by Tom Mollard.....	70
Society News.....	73
Notes & Queries.....	77
Annual General Meeting.....	78
Church Quest.....	79
Felbrigg Church, by Carrie Miller .....	80
Starling Memoirs .....	80
Aylsham in 1912.....	81
.....and Finally!.....	96

---

COVER ILLUSTRATION - comes from the cover of *Church Quest*, by Peter Holman.  
see page 79 for more details.



AYLSHAM LOCAL HISTORY  
SOCIETY

## **JOURNAL & NEWSLETTER**

---

Vol. 6

No. 3

---

### **ENCLOSURES**

**Ursula Warren**

Enclosure, was the appropriation of common land as private property. This had been, for many centuries past, a source of dispute and grievance. It is said that the enclosure of open fields, common lands, meadows and wastes, constitutes one of the most remarkable developments in English agriculture in the eighteenth and early nineteenth centuries, but we must remember that enclosure was a continuous process which had been going on from the Middle Ages.

But the volume of enclosure increased between 1793 and 1815. The new wave of enclosures from 1750-1800 forced many landless workers to move to cities, where they were to supply the labour for the Industrial Revolution. It is fair to say that enclosure was, of course, only one, but possibly the most important of the many changes that combined to reduce the numbers of the independent peasantry, while increasing the wealth of the countryside.

By 1820, the Agricultural Revolution had enclosed the open fields into rectangular, hedged fields, where scientific rotation of crops and pastures could be conducted, and fat stock reared to a very large size indeed. The Agricultural Revolution worked, not by the expansion of an old system, but by the creation of a new one. Large farms cultivated by leasehold tenants employed landless labourers at the expense of various forms of petty cultivation and ownership. Peasants were bought out to make room for the new order.

G. M. Trevelyan, on page 139 of his *Illustrated English Social History*, writes,

"The harmonious fabric of old English society suffered a perpendicular cleavage between town and country, as well as expanding the old lateral cleavage between rich and poor."

Oliver Goldsmith in his *Deserted Village*, wrote bitterly,

"Ill fares the land, to hastening ills a prey,  
Where wealth accumulates and men decay,  
Princes and Lords may flourish or may fade.  
A breath can make them as a breath has made,  
But a bold peasantry, their country's pride,  
When once destroyed can never be supplied"

Equally potently, John Clare wrote,

"Inclosure, thou art a curse upon the land,  
And tasteless was the wretch who thy existence planned"

Despite these literary misgivings and a great deal of passionate protest, after the third decade of the eighteenth century, many more Acts of Parliament were passed. These revolutionary Acts were hurried through every parliament of George III. (1760-1820). G.M. Trevelyan writes caustically on page 146 - "*a parliament not otherwise famous for radical legislation, but this was the radicalism of the rich, often at the expense of the poor.*"

J. L. and B. Hammond write in *The Village Labourer*,

"Enclosure was fatal to three classes; the small farmer, the cottager and the squatter."

The Hammonds convey the impression that the system of parliamentary enclosure was in fact a gigantic swindle by which the wealthy owners gained land and wealth, and in which they rode roughshod over the rights of small men. We must remember that another factor was responsible for the hardships of the poor, and that was the population rise. This was the main factor in the increase of landless, partially

workless labour force, and was a cause of increased Poor Law expenditure.

The areas affected by the Enclosure Acts comprised half the English counties, running from the East Riding of Yorkshire, through Lincoln to Norfolk, and the Midland shires to Wiltshire and Berkshire. It is important to remember that the age of enclosure was the age of new methods of farming, of drilling, draining, sowing, manuring, breeding and feeding cattle. New roads had to be made and farm premises rebuilt. This meant capital and credit available for the fashionable cause of agricultural improvement, and these the landlord class had.

Men like Townshend and Coke introduced into Norfolk new crops and new methods, above all, root crops, and the marling of light land, and put Norfolk, previously regarded as a backward county, into the limelight. G. M. Trevelyan writes,

"Agricultural experts from all over Europe gathered, sometimes six hundred together, in that remote corner of Norfolk, to see how land should be farmed and sheep fed."

Between 1776-1816, Coke so improved his land as to raise the rental of his Holkham estate from £2,200 to £22,000 a year. He made the fortunes of the tenants who paid these higher rents, and gave them security of long leases on strict terms as to cultivation. The radical, William Cobbett, in *Rural Rides*, writes of Coke, a Whig whose politics he did not approve of,

"It would be base of me not to say, that I hear from men of all parties, and sensible men too, expressions made use of towards him, that affectionate children use towards their parents."

André Parreaux, in *Daily life in England in the reign of George III*, writes:-

"Thomas Coke would rise as early as his labourers, and dressed in an ordinary smock, he tilled the land at their side."

He was praised, too, for the high standard of the farm buildings



and dwelling houses which he erected. I conclude by quoting from *The Agricultural Revolution, 1760-1813*, by J. D. Chambers and G. E. Mingay,

"Enclosure was then by far the most profitable use of capital in connection with land, and perhaps more profitable than many riskier commercial or industrial ventures, and this goes far to explain its popularity in the generally thriving conditions for agriculture . . .

. . . . An economic transformation on this scale could not fail to have profound repercussions on the balance of social and political forces, and the fact that this re-adjustment was carried through, on the whole peacefully, is one of the most remarkable political phenomena of the age."

---

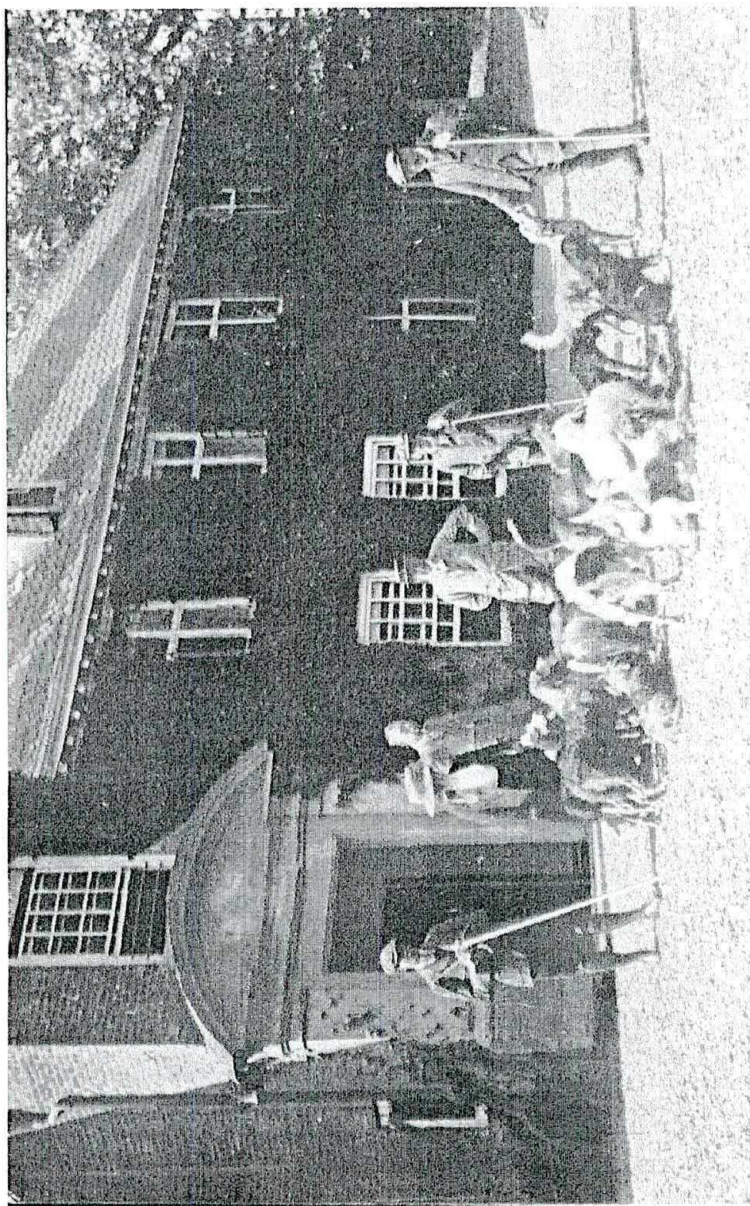
## **ABBOT'S HALL AND THE SHEPHEARD FAMILY**

**Tom Mollard**

In the March 2000 issue of the *Journal* (Vol. 6 No. 1) we were able to reproduce an extract from W. Cutting's book, "*Gleanings about Gayton*" (1886), which Geoffrey Nobbs had brought to my notice. The extract referred to the time when Philip Candler Shephard had married, and settled in Gayton as the local GP up to the time of his wife's death in 1875. His wife was a Miss Ellen Simson, who sadly died young of breast cancer.

The main point in the extract concerned the base of an old wayside cross which formerly stood in Gayton, '*opposite where the school now stands*'. This base was reputedly moved into the church and used for a time as the base for the baptismal font. In 1850, after further alterations to the interior of the church, the base was discarded, and for many years was used as a mounting block in the yard of the nearby Crown Inn. From there it moved to the lawn of Philip Shephard's house, and finally, when Philip left Gayton to return to Aylsham, the stone base went with him.

Philip spent the remainder of his life in Aylsham at Abbot's Hall,



The Bure Valley Otter Hounds gathered in front of the Manor House

and we know him better as the husband of Maria Pasqua, whose remarkable life is recorded in that delightful book *Maria Pasqua*, by Magdalen Goffin (1979). In the earlier article, I raised the question - "where is the stone base now? Is it still at Abbot's Hall?"

I must say straight away that we still do not know the answer to the question, but after raising it I received a letter from one of our own members, Ron Fiske, which adds an interesting account of the final days of the Shepheard family's connection with Abbot's Hall. The last member to live there was Dr. Sam Shepheard, a bachelor who lived alone there until his death. His major interest in life was the Bure Valley Otter Hounds which he led and maintained until his death.

The house and its contents were left untouched, gently mouldering away. At the time of Sam Shepheard's death, it was a veritable treasure trove, which created a great deal of interest when the contents came up for sale in 1974. Ron Fiske attended that sale and he records a vivid memory of it, and I can do no better than quote directly from it. Ron writes:

"... The sale might well have held the key to the Gayton stone cross. Amongst the listed outside effects, Lot 450 is found -*carved stone corbel and quantity of carved stonework.*"

The sale created quite a lot of interest. There was some good antique furniture and clocks, a quantity of porcelain and ivory including foreign works of art, and many curiosities. The silver and jewellery and the firearms attracted a good deal of interest, and there was a large quantity of books and pictures, and I recall that the books in particular fetched high prices.

Among the items of local interest was an early English brass spoon, reputedly found on the Abbot's Hall estate [lot 46] also a number of coins and tokens, some reputedly found at Bridge House, Gayton; an oak hat and coat stand made from the 1631 bell frame removed from Aylsham church in 1890 [lot 559]. Six mounted heads of otters were reminiscent of the late owner, Dr. Samuel Shepheard, who kept the Bure Valley Otter Hounds at Abbot's Hall.

Also present were his medical books, equipment and paraphernalia, and collections of shells, eggs, dried fish, pelts, skins, geological specimens and curiously preserved reptile skins and bones!



There were no rare or important works amongst the local books, many of which were bought by a titled North Norfolk proprietor. There were Kelly's and White's Norfolk Directories; volumes of the Norfolk Naturalists' and Norfolk Records' Societies (the former of which are always scarce), a set of Excursions through Norfolk, and of Marshall's Rural economy of Norfolk; and a clean and cased map of Norfolk by Bryant, dated 1826.

As the sale ended there was, as usual, much head shaking by

disappointed collectors, complaining at the extraordinarily high prices. More happily, many of the family papers went to Magdalen Goffin. . . other donations were preserved in the county via family gifts to the Norfolk Museums Service.



I enclose a copy of Alexander Simson's bookplate, which is affixed into the thirty two volumes of Chamber's Biographical Dictionary which I bought at the sale."

These were obviously owned by Philip Shephard's father-in-law at Gayton, and were brought home to

Aylsham by Philip after his first wife's death.

---ooOoo---

## SOCIETY NEWS

**Victorian Magic Lantern Show** - On the 23rd. March , the audience in a packed Friendship Club was treated to a rare display of Victorian lantern slides by Peter Stibbons. Not only were the slides genuine Victorian, but so also was the antique projector used to display them. The only concession to modern times was that the projector had been adapted to use electricity, but in its earlier life it had been in use, in Cromer, entertaining Victorian audiences, over 100 years ago.

Nearly all the slides were of Cromer and Poppyland and gave us a nostalgic view of a lovely seaside resort. There were also some later images, cleverly converted for projecting through the antique equipment, which completed the story. After enjoying the nostalgia we were treated to colourful scenes and images illustrating how the Victorian projectionist entertained his audience with sequences of slides telling a humorous story. There were even mechanically contrived moving images anticipating our modern TV pictures by many years.

Peter Stibbons was ably assisted by his daughter, and between them they produced a most entertaining evening for us. Even with two pairs of hands it seemed that the Victorian projectionist needed to work quite hard to produce a polished evening's entertainment. The Stibbons, father and daughter, certainly put on a polished performance for us.

**T.W.M.**

**Mystery History Tour** - After much too long a break, a coachful of members enjoyed another of Peter Holman's celebrated mystery tours. This one was to commemorate the Millennium. One of the pleasures of these trips is trying to guess, or work out where our destination might be, working from a few misleading remarks dropped by Peter, and the route the coach was taking. As usual, I was completely outfoxed, and was wrong on every occasion. I should have known better; these tours have such circuitous routes that they make me think of the lines from G. K. Chesterton's poem - *'the night we went to Birmingham by way of Beachy Head.'*

Our first stop turned out to be Houghton-on-the Hill, the ruined, deserted church, buried for years under dense undergrowth, in a deserted hamlet until recently uncovered by the redoubtable Bob Davey. After the coach had picked its way along a twisty, narrow farm track, we were met by Bob, who unfolded the story of the church, and particularly the remarkable wall paintings that are being uncovered from under medieval plaster, and which pre-date any previously discovered. The story of this church is fascinating. It needed a man of great determination to restore this church. Hearing how he discovered the holy water stoup being used as a bird bath in one garden, and the old baptismal font being used as a plant pot in another, it shows how

determined he was in the way he recovered both and put them back into the church.

Lunch was a highlight, all arranged in the nearby *Blue Lion* at North Pickenham. We had a choice of menu, a good selection and tasty food. It was also an excellent opportunity to meet and get to know other members of the society. After lunch, we went through the Breckland and Thetford forest to arrive at Elvedon to see the church that everyone knows about, but few of us ever get the chance to explore. We usually shoot past at great speed on our way to reach the M.11. What a surprise it was! much larger inside than it appears from the road. We were met by the churchwarden who answered all our questions. Elvedon is best known for its associations with Duleep Singh, who is buried along with other members of his family in the churchyard. He was brought to England by the British in 1849. He was the last king of Lahore and deposed after the 2nd. Sikh War. At first he settled in quite happily, and became involved with local affairs and local history. He was a book collector and at one time a prominent member of the Norfolk & Norwich Archaeological Society. His later years were not so happy. His name will be remembered. Elvedon has become a focal point of remembrance for Sikhs in Britain and the rest of the world. One important legacy of Duleep Singh is housed in Thetford library, where the Duleep Singh collection of local history exists.

Finally we moved to West Stow, and finished our tour at the Anglo-Saxon village and Heritage centre, which rounded the day off nicely. Our journey home was carefully chosen to take us through that delightful area, the border country between the two counties; an area not very well known, but a delight to travel through. All in all, an excellent day out, and even better, a good opportunity to meet other members that we seem never to get time to meet at our usual lecture meetings. I hope we do not have to wait until the next millennium for a repeat.

**T.W.M.**

**Flower Festival** - The Flower Festival in St. Michael's church was impressive with almost forty displays by different organisations. The ideas and themes, as well as the skill in the use of flowers to enhance the church interior created a striking effect. Patricia Hawkins and Margaret Rowe used Humphry Repton as the basis for the Aylsham



Local History Society's entry, and are to be congratulated on its high standard. Congratulations and thanks.

**Peter Holman**

**Dragon Hall and King Street** - On Wednesday, 5th. July a group of seventeen society members enjoyed a visit to Dragon Hall and King Street, Norwich. Before lunch, at Wensum Lodge, we were fortunate in having Chris Barringer to guide us around the very complex Dragon Hall buildings, where recent excavations have revealed new evidence and pose new questions. In the afternoon we explored King Street, the main north/south axis of Norwich, and the most important commercial and residential street in the city from Norman to Stuart times. At one time it contained the fine town houses of many of Norfolk's noble families and rich merchants, as well as 29 pubs, many small breweries, 6 churches, two friaries, a nearby priory and Mother Julian. All life was there! It will be interesting to see the future discoveries and development of the area now that the last remaining brewery has gone. The area over the river is being extensively developed and more funding has been sought. We were much obliged to Chris Barringer for his enthusiastic introduction to the project.

**Jean McChesney**

**Cringleford Historical Society** - This society had asked us to give a guided tour of Aylsham one evening. Twenty members arrived early on 19th. July, a pleasant sunny evening. After an introduction to Aylsham's history by Peter Holman, some visitors went with Peter Pink for a walk round the Market Place, Hungate St., the Manor etc. Others heard from Daphne Davy of the notable features of St. Michael's church, decked with many flowers remaining from the Flower Festival, and then walked with Peter Holman along White Hart St. and Millgate to the Mill. All gathered for refreshments later at the Friends' Meeting House, organised by Ursula Warren. They were very good listeners, and said how much they had enjoyed the evening.

**Betty Gee.**

**VISITS** - Some years ago we were fortunate enough to have one person taking responsibility for visits. This has not happened recently. We have had three visits this last year - the visit to Norwich Cathedral Library; The Millennium Mystery tour and the visit to Dragon Hall, all of which have been enjoyed by members. Perhaps we should be more



organised, and announce the three visits early in the year. It would help if members would take responsibility for organising, say, one visit each with the Committee's co-operation. We could also have an evening's walk around one of the local villages or parts of Norwich. We will ask for your reaction at the AGM

Betty Gee.

## NOTES & QUERIES

One of the most recent gifts received in the Aylsham Archives is the membership card illustrated here. Many of these gifts come from afar, usually from former citizens of Aylsham who have never forgotten the town of their birth. This card comes from a Mrs Margaret Kindred who lived here as a child. Mrs Kindred (née Cadney) remembers Aylsham around the 1920s and earlier, and the card probably dates from around that time. Strangely enough, nothing that we have at present in the archives refers to the Aylsham & District Countryside Protection League, and we have never seen a mention of this society previously. There were no items amongst the contents of the 'Barnwell Bundles' connected with the society, either. Neither

No. 85

### Aylsham & District Countryside Protection League

#### CARD OF MEMBERSHIP

Name *Muriel Cadney*  
(my sister)

"The lot is fallen unto me in a fair ground; yea, I have a goodly heritage." *Psalms 15.*

"This blessed plot, this earth, this realm, this England." *Shakespeare.*

#### AIMS & OBJECTS FOR MEMBERS

To stimulate public interest in the  
abolishment of all litter.

To prevent the disfigurement of the  
countryside.

F. O. BARNWELL, PRINTER, AYLSHAM.

is there a single reference to "Cadney" in any of the material, including directories, which has appeared in the *Journal*. Nevertheless, the Aylsham & District Countryside Protection League and Muriel Cadney clearly did exist, so who can tell us more about this society? How long did it run for, and who formed it, and when?

**Henry Budgen** - Greg Budgen is seeking help about his grandfather, John Henry Budgen, who was associated with Erpingham. He knows the main details but wants more personal information rather than dates. John Henry was a JP, a member of Erpingham RDC in 1900, and County Councillor. His dates are 1857-1928, he lived at Elm Farm, Suffield. Anyone who can help can make contact at 17 Lower Park Rd. Brightlingsea, Colchester. CO7 0JS. Telephone 01206-302315

**Norfolk History Quiz** - is organised annually and held on a Saturday evening in the Spring. The quiz is open to all history societies who enter a team of three, cost £6 per team. There is a trophy to be won and an entertaining evening to be enjoyed. If we have three members interested, let our secretary know and she will do the rest.

**Norfolk Studies Library** - Earlier this year a meeting between the Federation of Local Historical society organisations and the County Library staff ironed out a few niggles which had been annoying users. The meeting also came up with a request from the Local Studies library for help from users. We are asked to ask members who might have done research in recent years, if they have copies in any form of items from the Colman & Rye Local Studies Library. If they have, they are asked if they would allow the library to copy the items, if they are material lost in the fire. Contact *Mrs Judy Sims, 14 Beck Lane, Horsham St. Faith.* who will explain what to do.

## ANNUAL GENERAL MEETING

This will be held at the Friendship Club, **at 7pm** on Thursday 5th. October. All the necessary papers to go with the AGM should be delivered to you with this copy of the *Journal*. We already know in advance, that subscriptions for next year will remain the same as for

this year:- Individuals £7 and Married couples £12. so subscriptions for next year (which become due in October) can be paid anytime from now, to the Hon.Membership Secretary. A list of paid up members will appear as usual in the December 2000 *Journal*.

Some final details of next year's programme are still unresolved, so there seems no point in listing details in the *Journal*. All details should be finalised and circulated at the AGM together with Programme cards. Following the business meeting we will be treated to a talk, "*Aylsham in the past*" by Ron Peabody.

One event we can publicise before the AGM is the Day course arranged with the UEA. This will be "*The Forging of a nation, Anglo-Saxon England 275 AD - 1075 AD*" - Ten fortnightly meetings led by John Chatwin, starting on Tuesday, September 26th. 11am - 2.30pm and held at the Friends Meeting House. Further details from Peter Holman (733434)

---ooOoo---

### CHURCH QUEST

The illustration on the cover is taken from Peter Holman's latest creation. It is a splendid piece of work in Peter's own inimitable style, beautifully drawn in glorious detail and I suspect our cover illustration hardly does it justice. As ever, it is not just something to enjoy looking at, it is also a brain-teaser requiring a certain amount of leg work and even more brain work which together will take you to several local churches.

If you decide to undertake Peter's quest, you will find it a most enjoyable experience, and from it you might even win a prize. All essential details are available from Peter.

## FELBRIGG CHURCH

Carrie Miller

On the 23rd. July I visited St. Margaret's church, Felbrigg, as they had a flower festival, along with the tower and family vaults being open.

I climbed the tower, it is not very tall, but you got a good view of the estate and I could just see Aylsham church. When I first saw Felbrigg church I assumed that it belonged to the estate as it is within the grounds. The church is the parish church and was built by the parishioners in the 14th. century. Felbrigg village was originally situated around the church, but Simon Felbrigg was currently living at the hall and did not like the view of the 'peasant' village (as he called it) so he had the village moved to where it stands today. The guide who took the tower tour also mentioned that the church tower, and many others, was used as a look-out especially during the times of Henry VIII and Oliver Cromwell. At the base of the tower, to the right hand side of the door, there is a hole in the wall. There used to be a wafer oven there which was used to bake the wafers for Mass.

I did not fancy visiting the vaults which contained tombs of the Wyndham family, though there are many monuments to the family to be seen in the church. The church is open daily and certainly worth a visit. Finally, I am in search of Norfolk's smallest church. If anyone knows which it is please let me know.

---ooOoo---

### THE STARLING MEMOIRS

I hope that this will be the final 'progress report' on the Starling Papers. After all the years of planning and discussing and editing and checking, the text of William Frederick Starling's memoirs are finally in the hands of the printer. Thanks to the society, the costs of publishing are guaranteed, proof pages are being checked, and providing there are no unseen hiccups, the Publications Committee hopes to have copies of the book ready for sale at the society's AGM in October.

This project has been so long in consideration that it is hard to believe that we are almost there. We hope to be able to present a handsome, well-printed, illustrated, paper back volume at the remarkable bargain price of £5.50, [plus p&p, where necessary] at the Annual General Meeting.



## AYLSHAM IN 1912

Kelly's directory for 1912 is the next one in the series of county directories. Below is the entry for Aylsham. The directory entries are becoming larger now and take up more space in the Journal, but they are still useful and well worth including

**AYLSHAM**, mentioned in Domesday as "Elesham," is a market and union town, head of a county court district and parish, on the banks of the river Bure, which is navigable hence to Yarmouth, having a station on the Great Eastern railway and another on the Midland and Great Northern joint railway, and is 12 miles north from Norwich, 7 west from North Walsham and 125½ from London, in the Northern division of the county, South Erpingham hundred and petty sessional division, rural deanery of Ingworth (South Division) and archdeaconry and diocese of Norwich. The town is lighted with gas supplied by the Aylsham Gas Co. Limited; there is no water supply except from wells. The church of St. Michael is a building of flint in the Decorated and Perpendicular styles, and was erected c. 1380 by John of Gaunt, Duke of Lancaster, the court of whose duchy was once held in this town; it consists of chancel with aisles

and vestry, clerestoried nave of six bays, aisles, transepts, south porch, with parvise, and an embattled western tower with crocketed pinnacles and a small spire, and containing a clock and 10 bells, re-hung, and the belfry repaired, in 1890, at a cost of £285: the chancel retains three sedilia and a double piscina, and there are also piscinæ in the south aisle and the south transept: the font is enriched with bas-reliefs of the emblems of the four Evangelists, the instruments of the Passion, and the arms of the Duke of Lancaster, with other armorial insignia: of the rood screen, erected in 1507, principally at the cost of Thomas Wymer, worsted weaver, only the lower part now remains, and is adorned with painted figures of apostles and martyrs, and has an inscription in Latin to Thomas Wymer and Joan and

Agnes his wives: the remains of the former arcading of the screen are now incorporated in the reredos, constructed out of carved wood from various parts of the church: the tomb of Wymer, with brass effigy in shroud, and the date 1507, is in the church: here is also a brass, with effigies as skeletons in shrouds, to Richard Howard, citizen and sheriff of Norwich, who, in 1488, built the church porch, and died 13 Jan. 1499, and to Cecilia, his wife: there are other brasses to Thomas Tylson B.A. rector, c. 1490, with effigy in almuce and scrolls; and to Robert Farman and Katherine, his wife, c. 1490, and there are effigies of a man and his wife much worn: the church also contains monuments to the families of Jermy, Drake, Wrench, Norgate and Rushburgh, and there is a monument, somewhat mutilated, to John Jegon S.T.P. Bishop of Norwich from 1602, who died 13 March, 1617: the east window, the tracery of which has been restored, is decorated with stained glass, placed in 1842-3, and representing apostles, with various devices, and the armorial bearings of the Hobarts, Earls of Buckinghamshire, those of the See of Norwich, impaling Stanley, the duchy of Lancaster, and others: there is another stained window to eight former vicars, and one containing some beautiful specimens of old glass, inserted at the expense of the late Rev. E. T. Yates, a former vicar, together with the armorial bearings of his family, and of S. Pitman esq. then lay impropiator of the parish, and the Dowager Lady Suffield: the old organ was presented by the Rev. E. T. Yates, who also contributed to the restoration of the church in 1852: but a new organ was provided in 1911 at a cost of £700: the pulpit dates from about 1600: the eagle lectern is modern: there were once several chantries in this church, one of which was founded 8 July, 1534, by Robert Jannys, who also founded the Free School: the Communion plate includes a chalice and paten of 1567, besides other pieces of later date: in a recess in the churchyard is the grave of Humphrey Repton, the celebrated landscape gardener, who died 24 March, 1818: there are 850 sittings. The register dates

from the year 1653. The living is a vicarage, net yearly value £290, including 5 acres of glebe, with residence, in the gift of the Dean and Chapter of Canterbury, and held since 1888 by the Rev. John Gurney Hoare M.A. of Trinity College, Cambridge, hon. canon of Norwich, rural dean of Ingworth (Southern division), and surrogate. The Ecclesiastical Commissioners hold the larger portion of the great tithes. A mission room was built in 1890, on ground adjoining the churchyard, at a cost of £400, by the late Mr. B. Cook. There is a small Catholic church in White Hart street. The Baptist chapel is in White Hart street; it was founded in 1791, and has sittings for 450 persons: there is a Primitive Methodist chapel on the Cawston road, a Wesleyan Methodist chapel in White Hart street, a Reformed Wesleyan chapel in Millgate and a Gospel hall on the Cawston road; adjoining Mr. Philip Shephard's residence is a Catholic chapel, in which services are held occasionally. The Cemetery, of two acres, formed in 1855 at a cost of £600, was enlarged in 1900 by the addition of 1½ acres, and is under the control of the Parish Council. The Town Hall, in the Market place, now the property of the town, is a structure of red brick, and has a reading room and literary institute attached. A fire brigade is maintained here. Fairs are held yearly on March 23rd and last Tuesday in September. Cressey's charity of £31 6s. yearly is given in doles, and is under the control of the Parish Council. Abbots Hall, erected in 1610 by a member of the Wood family, and now the property and residence of Philip Candler Shephard esq. J.P. stands on the site of the ancient moated residence. The Manor House, on the Norwich road, the property and residence of Major H. J. Bowman, was built in 1608 by Bishop John Jegon, of Norwich, who died in the house in 1617: it contains some very fine old oak. There are four manors, Aylsham Lancaster manor belonging to the Marquess of Lothian; the Vicarage manor, belonging to the vicar; Sexton's manor, commonly called "Aylsham Wood," the property of the trustees of the late Thomas Copeman esq.; and Bolwick manor, belonging to W. S. Calvert esq. The principal



landowners are the Marquess of Lothian, Thomas Woods Purdy esq. Mrs. Louis Buxton, of Bolwick, Philip Candler Shephard esq. Col. Benjamin Beckham Sapwell, the Rev. William James Stracey-Clitherow, of 50 Portland place, London W, the trustees of the Rev. Robert Alfred Rackham M.A. (d. 1903), and Col. E. R. A. Kerrison R.A., C.M.G. of Burgh Hall, and a few smaller owners. The area is 4,305 acres of land and 25 of water; rateable value, £11,488; in 1911 the population of the parish was 2,627, including 12 officers & 137 inmates in the workhouse.

Parish Clerk and Sexton of Cemetery, George Neale, Town hall.

#### PUBLIC ESTABLISHMENTS, LOCAL INSTITUTIONS &c.

Post, M. O., T. & Telephonic Express Delivery Office.—Harcourt Augustus McCreedy, postmaster. Deliveries at 7 & 10.30 a.m. & 3 (callers only) & 5.45 p.m.; dispatches at 4.50 & 9.35 a.m. & 12.15, 2.20, 5.40 & 7.45 p.m.; sundays, delivery, 7 a.m.; dispatched at 5 p.m.

Wall Letter Boxes.—Millgate street, cleared 8.30 & 11.30 a.m. & 5.10 & 7.40 p.m. week days only; Cawston road, cleared 8.20 & 11.45 a.m. & 4.45 & 7.25 p.m. week days & 8.30 a.m. sundays; Cromer road, cleared at 8.15 & 11 a.m. & 5.5 & 7.45 p.m. week days & 8 a.m. sundays

Railway Station (G.E.R.), cleared 9.50 a.m. & 12.30, 5.50 & 8.10 p.m. week days only

#### JUSTICES OF THE PEACE FOR SOUTH ERPINGHAM PETTY SESSIONAL DIVISION.

Marsham Major Henry Savill D.L. Rippon hall, Hevingham, Norwich, chairman

Birkbeck William John esq. D.L. Stratton Strawless hall, Norwich

Bolton Walter Henry esq. Oulton hall, Aylsham

Buxton Walter Louis esq. Bolwick hall, Marsham, Norwich

Kerrison Col. Edmund Roger Allday, Burgh hall, Aylsham

Orford Earl of D.L. Wolterton park, Erpingham, Norwich

Patteson Frank Eugene esq. Great Hautbois ho. Norwich



Sapwell Col. Benjamin Beckham V.D. Sankence, Aylsham  
Sewell Philip Edwd. esq. Dudwick ho. Buxton, Norwich  
Shepherd Philip Candler esq. Abbots hall, Aylsham

The chairman, for the time being, of the Aylsham Rural  
District Council, is an ex-officio justice of the peace  
Clerk to the Justices, Thomas Woods Purdy B.A.  
solicitor, Aylsham.

Petty Sessions are held at the Town hall every other  
tuesday at 11. The following places are included in the  
petty sessional division :—Alby-with-Thwaite, Aylsham,  
Banningham, Barningham Parva, Belaugh, Blickling,  
Booton, Brampton, Burgh-next-Aylsham, Buxton, Cal-  
thorpe, Cawston, Colby, Coltishall, Corpusty, Erping-  
ham, Hautbois Magna, Hevingham, Heydon, Ingworth,  
Irmingland, Itteringham, Lammas - with - Hautbois  
Parva, Mannington, Marsham, Oulton, Oxnead, Sax-  
thorpe, Scottow, Skeyton, Stratton Strawless, Swanton  
Abbot, Tuttington, Wickmere & Wolterton

#### AYLSHAM RURAL DISTRICT COUNCIL.

Meets at the Workhouse, on tuesdays alternately, at  
10.30 a.m.

Chairman, William Case, Tuttington, Aylsham

Clerk, Henry James Gidney, Old Bank house, Aylsham

Treasurer Hy. Birkbeck, Barclay & Company Ltd. Aylsham

Medical Officer of Health, Herbert Hatfield Back M.B.  
Lond., M.R.C.S. Eng. Acle, Norwich

Inspector of Nuisances, James Weatherbed C.R.S.I. Caw-  
ston road

Surveyor of Highways, Leonard J. Preston, Buxton road

#### PUBLIC ESTABLISHMENTS.

Cemetery, Henry James Gidney, clerk

County Court, held at the Town hall bi-monthly, His  
Honor James Mulligan K.C. judge; Hy. Jas. Gidney,  
registrar & high bailiff. The district comprises the fol-  
lowing parishes :—Alby-with-Thwaite, Aylsham, Alder-  
ford, Banningham, Barningham Parva, Belaugh, Blick-  
ling, Brampton, Booton, Burgh, Brandiston, Buxton,  
Calthorpe, Cawston, Colby, Coltishall, Corpusty, Erping-  
ham, Foulsham, Guestwick, Hackford, Hautbois Magna,

Haveringland, Hevingham, Heydon, Hindolveston, Ingworth, Irmingland, Itteringham, Lammas-with-Hautbois Parva, Mannington, Marsham, Oulton, Oxnead, Reepham-with-Kerdistone, Sall, Saxthorpe, Scottow, Skeyton, Stratton Strawless, Swanton Abbot, Swanington, Themelthorpe, Thurning, Tuttington, Whitwell, Wickmere, Witchingham (Great), Witchingham (Little), Wood Dalling, Wood Norton & Wolterton

For Bankruptcy purposes this court is included in that of Norwich; Harry Pearce Gould, 8 Upper King st. Norwich, official receiver

County Police Station, Blickling road, Francis Southgate, superintendent; 2 sergeants & 15 constables

Gas Company, Robert L. Roe, sec.; George Taylor, manager, Mill gate

Parish Council, Harry F. Proudfoot, clerk

Town Hall, Market place, Harry F. Proudfoot, sec.; George Neale, keeper

#### TERRITORIAL FORCE.

Aylsham Detachment 5th Battalion Norfolk Regiment (C Co.), Pound road; Capt. T. W. Purdy; Sergt.-Instructor, Thomas Davis

#### AYLSHAM UNION.

Board days, tuesday, fortnightly, at the Union work-house at Aylsham.

The Union includes the following parishes:—Alby-with-Thwaite, Aylsham, Banningham, Barningham Parva, Belaugh, Blickling, Brampton, Burgh, Buxton, Calthorpe, Cawston, Colby, Coltishall, Corpusty, Erpingham, Foulsham, Guestwick, Hackford-by-Reepham, Hautbois Magna, Hevingham, Heydon, Hindolveston, Ingworth, Irmingland, Itteringham, Lammas-with-Little Hautbois, Mannington, Marsham, Oulton, Oxnead, Reepham-with-Kerdistone, Sall, Saxthorpe, Scottow, Skeyton, Stratton Strawless, Swanton Abbot, Themelthorpe, Thurning, Tuttington, Whitwell, Wickmere, Wolterton, Wood Dalling & Wood Norton. The population of the union in 1911 was 17,346; area, 69,341 acres; rateable value in 1912, £90,527

Chairman, William Case, Tuttington, Aylsham

Clerk to the Guardians, Henry James Gidney, Old Bank house, Aylsham

Assistant Clerk, Edmund Dennis Browne, Burgh road, Aylsham

Treasurer, Henry Birkbeck, Barclay's Bank Ltd. Aylsham  
Relieving & Vaccination Officers, Buxton district, Fredk.

W. C. Roe, Cawston road, Aylsham; Eynsford district, Edward Robert Le Neve, Reepham

Medical Officers & Public Vaccinators, 1st district, Edwd. Verdon Perry M.R.C.S.Eng., L.R.C.P.Lond. Reepham; 2nd district, William Dewing Spurrell L.R.C.P.Lond., M.R.C.S.Eng. Alborough; 3rd district, Wm. Herbert L.R.C.P.Lond., M.R.C.S.Eng. Foulsham; 4th district, Frederick Little M.R.C.S.Eng., L.S.A. The Orchards, Aylsham; 5th district, Herbert George Berry M.R.C.S.Eng., L.R.C.P.Lond. Reepham; 6th district, Augustus Charles Morton M.R.C.S.Eng. The Beeches, Aylsham; 7th district, Bernard Duncan Zorapore Wright M.R.C.S.Eng., L.R.C.P.Lond. Coltishall

The Workhouse, erected in 1849, is a structure of red brick, in the Elizabethan style, erected to hold 619 inmates; Rev. Thomas Barnes, chaplain; Augustus Charles Morton, medical officer; George James Godfrey, master; Mrs. Godfrey, matron

#### AYLSHAM REGISTRATION DISTRICT.

Superintendent Registrar, Henry James Gidney, Old Bank house, Aylsham

Deputy Superintendent Registrar, Edmund Dennis Browne, Burgh road, Aylsham

Registrars of Births & Deaths, Eynsford sub-district, Edward Robert Le Neve, Reepham; deputy, Florence Le Neve, Reepham; Buxton sub-district, Frederick W. C. Roe, Cawston road, Aylsham; deputy, Harry F. Proudfoot, Market place, Aylsham

Registrar of Marriages, Harry F. Proudfoot, Market pl. Aylsham; deputy, Harry W. Marjoram, Aylsham

#### PUBLIC OFFICERS.

Clerk to the Commissioners of Taxes, Thomas Woods Purdy, Market place



Clerk to the Navigation Commissioners, Thomas Woods  
Purdy, Market place  
Assessor & Collector of the King's Taxes, Harry Walter  
Marjoram, Burgh road  
School Attendance Officer, Arth. Jn. Blades, Cawston rd  
Town Crier, Harry F. Proudfoot, Market place

#### PLACES OF WORSHIP, with times of Services.

St. Michael's Church, Rev. Canon John Gurney Hoare  
M.A. vicar & surrogate; Rev. Charles Waters M.A.,  
LL.M. curate; 8 & 10.45 a.m. & 3.30 & 6.30 p.m.;  
wed. 7 p.m.; fri. 8 a.m.; saints' days, 12 noon  
Catholic, mass occasionally at the chapel adjoining Mr.  
Philip Shephard's residence  
Catholic, White Hart street; mass 1st thurs. in month  
8.30 a.m.  
Baptist, White Hart street, Rev. John Read; 10.45  
a.m. & 6.30 p.m.; mon. 8 p.m.  
Primitive Methodist, Cawston road, Rev. Joshua Biggs;  
11 a.m. & 2.30 & 6.30 p.m.; thurs. 7.30 p.m.  
Wesleyan Methodist, White Hart street (Norwich, North  
Walsham & Cromer Mission) (various); 10.45 a.m. &  
6.30 p.m.; wed. 7.30 p.m.  
Wesleyan Reform, Millgate street, Rev. John Hayhoe;  
2.30 & 6.30 p.m. & no morning service; mon. 7.30 p.m.  
Salvation Army, Hungate street; 7.30 & 11 a.m. & 3  
& 6.30 p.m.; mon. thurs. fri. & sat. 8 p.m.  
Gospel Hall, Cawston road; 10.45 a.m. & 3 & 6.30  
p.m.; tues. & thurs. 8 p.m.

#### SCHOOLS.

A free school was founded here in 1517 by Robert  
Jannys, mayor of Norwich in that year, & endowed  
with £10 from the funds of King Edward VI.'s hos-  
pital at Norwich, but it is now merged in the Council  
school

Public Elementary, erected in 1848, for 130 boys, 130  
girls & 110 infants; average attendance, 130 boys, 130  
girls & 108 infants; Geoffrey Hill, master; Miss A. M.  
Dunthorne, mistress; Mrs. E. J. Dester, infants' mist



## RAILWAY STATIONS.

Aylsham (Gt. Eastern), Arth. Wm. Finch, station master  
Aylsham Town (Midland & Great Northern Joint Railway), Thomas J. Turbett, station master

## CARRIER.

Norwich—March, from Town lane, mon. wed. fri. & sat. at 9 a.m. returning from 'Duke's Palace,' Norwich, at 4.45 p.m

## PRIVATE RESIDENTS

- |  |  |
|--|--|
| Barclay, Joseph Francis. The Old Hall          | Gordon, Mrs. Cromer Rd                       |
| Barker, Mrs. White Hart St.                    | Goulder, Mrs. The Manor House of the         |
| Barker, Thomas Edmund, Oakfield Rd             | Duchy of Lancaster                           |
| Barnwell, Charles Henry, St. Michael's Villas, | Green Philip. Oakfield Rd.                   |
| Cawston Rd.                                    | Grigson, Rev. Edward BA, West Lodge,         |
| Biggs, Rev. Joshua (Primitive Methodist)       | Blickling Rd.                                |
| The Manse, Burgh Rd.                           | Hayhoe, Rev. Jn. (Wesleyan Reform)           |
| Boffee, William John, The Lodge,               | Cawston Rd.                                  |
| Oakfield Rd.                                   | Hill, Geoffrey. Edgefield, Town Lane.        |
| Bond, James F. Fernleigh, Blickling Rd.        | Hoare, Rev. Canon John Gurney MA             |
| Boulderson, Arthur, Woodgate, Cawston Rd.      | (vicar, rural dean & surrogate)              |
| Bowman, Major Henry James (late 95th.          | Howlett, Ms. White Hart St.                  |
| Derbyshire Regt.) The Manor House,             | Ingate, Arnold. Cromer Rd.                   |
| Norwich Rd                                     | Ingate, Lewis. Oak Cottage, Cromer Rd.       |
| Browne, Edmund Dennis, Burgh Rd                | Ireland, Miss. Heydon Rd                     |
| Bruce, Stanley W. Commercial Rd                | Ivens, Mrs. Cromer Rd.                       |
| Bullock, Mrs. Pinfold St.                      | Ives, Mrs. Market Place                      |
| Bullock, Stanley. Millgate St.                 | Jowlings, Mrs. Cromer Rd.                    |
| Clark, Mrs. James. Commercial Rd               | Kelly, John. Burgh Rd.                       |
| Clements, Mrs. Red Lion St.                    | Larkworthy, Falconer. Bayfield House.        |
| Connold, Miss, Woodbine Villa, Cromer Rd       | White Hart St.                               |
| Cook, Miss. Church Terrace                     | Last, Robert Samuel. Pinfold St.             |
| Cooper, William Charles Payne. Bank            | Le Neve, Charles Gay. Hungate St.            |
| House, Market Place                            | Little, Frederick. The Orchards, Norwich Rd. |
| Day, Rev. Theodore Henry Crossman BA.          | Lyon-Campbell, Col. Charles A. (late R.E.)   |
| Paradise House                                 | Sankence Lodge, Cawston Rd.                  |
| Edwards, Mrs. Burgh Rd                         | Marjoram, Harry Walter. S. Andrew's Villa,   |
| Flood, Mrs. Church Terrace                     | Burgh Rd.                                    |
| George, Alfred R. Burgh Rd.                    | Meadows, Col. Evelyn Philip, St. Michael's   |
| Gidney, Henry James. Old Bank House            | Villas, Cawston Rd.                          |
| Gilbert, Mrs. Clement, Cromer Rd               | Meadows, Rev. Robert Rust. M.A.              |
| Gillett, John Howard, Burgh Rd.                | Heydon Rd.                                   |
| Gillman, Mrs. St. Michael's Villas,            | Meadows, Miss. Burgh Rd.                     |
| Cawston Rd                                     | Miller, Herbert. Church Terrace.             |
| Gooch, James. Yew Tree House                   |  |

Morton, Augustus Chas. The Beeches  
 Morton, Miss. Burgh Rd  
 Newstead, Rev. Edmund Starling. Pound Rd.  
 Nott, Walter. Cawston Rd.  
 Page, Alfred. Pound Rd.  
 Page, Henry. Hill House, Heydon Rd.  
 Palmer, Mrs. Market Place  
 Partridge, James Daniel. Oakfield Rd.  
 Purdy, Thomas Woods. B.A. Millgate Ho.  
 Quantrell, Colin T. Church Terrace.  
 Rayson, Frederick. Cawston Rd.  
 Read, Rev. J. (Baptist) White Hart St.  
 Roe, Robert Leonard. Oakfield Rd.  
 Roy, Alfred. Gothic House, Hungate St.  
 Sapwell, Col. Benjamin Beckham V.D.  
     J.P. Sankence, Cawston Rd.  
 Sapwell, Benjamin Beckham Jnr. BA, LLB,  
     MB, BC. The Grange, Cromer Rd.  
 Sayers, Mrs. Cromer Rd.  
 Sewell, Bertram. Heydon Rd.  
 Shepherd, Miss Charlotte Candler, White  
     Hart St.

Shepherd, Miss E. A. White Hart St.  
 Shepherd, Philip Candler JP, Abbot's Hall  
 Shreeve, Mrs. Commercial Rd.  
 Smith, Mrs Richard. Market Place.  
 Soame, Mrs. St. Michael's Villas, Cawston  
     Rd.  
 Soundy, Samuel Martin. Bushey, Cromer  
     Rd.  
 Starling, William Frederick. White Hart St.  
 Stoner, Edward Thomas. Burgh Rd.  
 Sutton, Mrs. Cawston Rd  
 Talbot, Bertram William C. The Dell,  
     Heydon Rd.  
 Tuddenham, John Henry. Burgh Rd.  
 Tuttle, Mrs. Church Terrace  
 Tuttle, Walter Edward. Bankfield,  
     Commercial Rd.  
 Walne, Jas. Geo. Elgin Ho. Burgh Rd.  
 Waters, Rev. Charles LLM, MA. (curate)  
 Wood, Mrs. Burgh Rd  
 Woods, Mrs. Oakfield Rd.

## COMMERCIAL

[Early closing day, Wednesday]

Ancient Order of Foresters, Court Pride of Aylsham, (Samuel Gotts,  
     secretary) Market Place  
 Applegate, Lydia (Mrs). Temperence Hotel, Red Lion St.  
 Atkins James Henry, carpenter, wheelwright & under-  
     taker, Millgate street  
 Aylsham Gas Co. Limited (Robert L. Roe, sec.; Geo.  
     Taylor, manager)  
 Aylsham Town Hall (Harry F. Proudfoot, sec.; George  
     Neale, hall keeper), Market place  
 Bailey Sidney, pork butcher, White Hart street  
 Balls Edwd.Chas. Unicorn P.H. & fishmongr.Hungate st  
 Barclay, Pallett & Co. Limited, millers (steam) & coal,  
     coke, corn, flour & seed merchants, Dunkirk roller  
     mills; & at Railway station, Cawston, Norwich  
 Barclay & Company Limited, bankers (William Charles  
     Payne Cooper, manager); open 10 to 4, except sat. 9  
     to 12.30, Market place; draw on head office, 54  
     Lombard street, London EC  
 Barker Thomas E. ironmonger, Red Lion street

Barnard Eugenie (Mrs.), New inn, Red Lion street  
 Barnwell Charles Henry, stationer, Market place  
 Beck Ellen (Mrs.), smith & machinist, Burgh road  
 Bexfield Jane (Mrs.), grocer, Red Lion street  
 Blackstone William Henry, hair dresser, White Hart st  
 Blades Arthur John, school attendance officer, Cawston rd  
 Bland Fred, Ship P.H. White Hart street  
 Blofield William, butcher & farmer, Red Lion street  
 Bloom Mildred (Miss), dress maker, Pound road  
 Brady & Pert, plumbers, Church hill  
 Breese James Thomas, tailor, Red Lion street  
 Browne Edmund Dennis, deputy superintendent registrar & assistant clerk to union, Burgh road  
 Bruce Stanley W. auctioneer & estate agent; agent for Bagshaw's manures, half-inch & dust bones, nitrate of soda, fish & other salts, Bank street & dealer in modern & antique furniture, Red Lion street  
 Buckingham Frank Edward Ph.C. chemist, Red Lion st  
 Bullock Stanley, miller (water), Millgate  
 Carr Edward, sewing machine agent, Fairleigh terrace  
 Cemetery (Henry James Gidney, clerk)  
 Chamberlin Sarah & Emily (Misses), ladies' school, The Beeches, Cawston road  
 Clarke Ernest, Anchor P.H. Millgate street  
 Clarke George Probert, ironmonger, Market place  
 Clarke Martha Fuller (Mrs.), baker, Church hill  
 Coleman Frederick L. photographer, Red Lion street  
 Coller R. & Sons Limited, corn & coal merchants, Great Eastern station; & at Norwich  
 Constable Daisy (Miss), dress maker, Commercial road  
 Cooper William Charles Payne, bank (branch) manager to Barclay & Company Limited, Bank house, Market place  
 County Court (His Honor James Mulligan K.C. judge; Hy. Jas. Gidney, registrar & high bailiff), Town hall  
 Cripps William, greengrocer, Millgate street  
 Cross & Co. corn, cake, coal, seed & manure merchants, Great Eastern station  
 Dale Rose Emma (Miss), tobacconist, Red Lion street  
 Daniels Thomas Flaxman, farmer, Millgate street  
 Davis Sergt. Thomas, drill instructor to C Co. 5th Territorial Force Battalion Norfolk Regt. Pound road



Dester Joseph Dester, chemist, Market place  
Dewing Ellen (Mrs.), dress maker, Commercial road  
Dixon James John, cycle dealer, Red Lion street  
Doidge David, beer retailer, Cawston road  
Ducker Samuel, carpenter, wheelwright, shoeing &  
general smith & agricultural implement maker & re-  
pairer, White Hart street

Ducker William, grocer, Millgate street  
Durrell George, farmer, West End lodge, Blickling road  
Durrell George Sidney, farmer, Drabblegate  
Emsden Herbert Thomas, beer retailer, Hungate street  
Ewing John, fruiterer, Red Lion street  
Field Wm. monumental & general mason, Burgh road  
Finch Constance & Maud (Misses), fancy statnrs. Red Lion st  
Fowler William, apartments, Burgh road  
Frankland Richard (Mrs.), ironmonger, Hungate street  
Fröstick John, jobbing gardener, Peterson's road  
Gidney Henry James, solicitor, commissioner for oaths &  
for taking acknowledgments of married women, clerk  
to the guardians & assessment committee of Aylsham  
union, to Aylsham Rural District Council & to the  
burial authority, & superintendent registrar of Ayl-  
sham district, registrar & high bailiff of County Court,  
Old Bank house

Gladman William, draper & grocer, Cromer road  
Gooch James, farmer, Hungate Street farm  
Gostling Henry, farmer, Buxton road  
Gotts Samuel, confectioner, & parcel agent to the Great  
Eastern Railway, Market place  
Goulder John (exors. of the late), farmers, & agents for  
Law's manures, The Manor house of the Duchy of  
Lancaster  
Grix Henry, boot maker, Town lane  
Grix Robert, farmer, Rackham's farm, Burgh road  
Hall Charles, stone & monumental mason, Hillgate st  
Hall Frederick, farmer, The Spa  
Hall Miles, Red Lion hotel, Red Lion street  
Hill Frank, teacher of music & organist at parish  
church, Oakfield road  
Holley Edward, solicitor & commissioner for oaths (firm,

Purdy & Holley)  
 Horner Frederick R.S.S. blacksmith, Cawston road  
 Howe Florence (Miss), parish nurse, Cromer road  
 Hubbard & Son, plumbers, painters & paperhangers,  
 Red Lion street  
 Ingate Lewis & Son, coach builders, Cromer road  
 International Tea Co.'s Stores, tea dealers, Red Lion st  
 Jackson John Loal, farmer, Woodgate farm, Cawston rd  
 Jarvis James, boot maker & shopkeeper, Hungate street  
 Jex George, shopkeeper, Hungate street  
 Keymer James, carpenter, Hungate street  
 Lancaster Arthur, insurance agent, Fairleigh terrace  
 Larke Hephzibah (Mrs.), confectioner, Red Lion street  
 Larke William Robert, outfitter & tailor, Red Lion street  
 Larter Robert, boot repairer, Hungate street  
**Last Robert Samuel**, wholesale & retail ironmonger,  
 agricultural implement agent, oil & color merchant,  
 gasfitter & bellhanger, Market place  
 Laxen Albert Richard, saddler &c. Market place  
 Laxen Horace, baker & confectioner, Red Lion street  
 Lee Herbert, farm bailiff to Col. B. B. Sapwell J.P  
 Literary Institution (H. J. Gidney, president; E. D.  
 Browne, hon. sec.), Market place  
 Little Frederick M.R.C.S.Eng., L.S.A. surgeon, & medi-  
 cal officer & public vaccinator 4th district, Aylsham  
 union, The Orchards, Norwich road  
 Lomax Samuel, butcher, Red Lion street  
 Loveday Henry, butcher, Red Lion street  
 McCreedy Harcourt Augustus, postmaster, Market place  
 March Arthur John, carrier, Town lane  
 Marjoram Harry Walter, assessor & collector of taxes,  
 deputy registrar of marriages, newspaper correspon-  
 dent, St. Andrew's, Burgh road  
 Martin Walter John, blacksmith, Millgate street  
 Meale Harvey, draper & grocer, Millgate street & baker,  
 White Hart street  
 Miller A. boot & shoe maker, Market place  
 Miller Thomas, apartments, The Limes, Burgh road  
 Morley Daniel, jobbing gardener, Peterson's road  
 Morton Augustus Charles M.R.C.S.Eng., L.S.A. surgeon,  
 & medical officer & public vaccinator 6th district &  
 workhouse, Aylsham union, The Beeches. TN2Aylsham

Moy George, boot & shoe maker, Market place  
 Neale George, bricklayer, Cawston road  
 Needham Walter, picture frame maker, White Hart st  
 Nicholls Stanley, butcher, Millgate street  
 North Walsham & Aylsham Agricultural Association  
 (Harry F. Proudfoot, sec.), Market place  
 Norton Robert A. insur. agent, Unicorn yard, Hungate st  
 Oakley George James, baker, Cawston road  
 Odd Fellows (M. U. I. O. O. F.), Marquis of Lothian  
 Lodge (R. L. Roe, sec.), meets at the Black Boys hotel  
 Oliver George, Stone Masons' Arms P.H. Millgate street  
 Orton Sarah Ann (Mrs.), farmer, Stonegate  
 Overed James Wm. veterinary surgn. Commercial road  
 Page Henry, wholesale & retail tea dealer & grocer,  
 wine, spirit & ale merchant, general draper & out-  
 fitter & china & glass dealer, Market place & Hungate  
 street; & at Sheringham  
 Partridge Daniel, butcher & farmer, Red Lion street  
 Pashley Ernest, Black Boys commercial hotel, whole-  
 sale & retail cider merchant &c.; posting house.  
 Market place. T N 3 Aylsham  
 Pask & Sons, tailors & breeches makers, Red Lion st  
 Poll Henry, farmer, Cawston road  
 Postle Mary Ann (Mrs.) & Ernest, beer retailers &  
 bakers, Hungate street  
 Preston Leonard J. highway surveyor to the Rural  
 District Council, Buxton road  
 Pretty George, grocer & draper, Red Lion street  
 Proudfoot Harry F. assistant overseer & clerk to the  
 Parish Council, registrar of marriages for Aylsham  
 district & deputy registrar of births & deaths for the  
 Buxton sub-district & sec. to North Walsham &  
 Aylsham Agricultural Association & assistant over-  
 seer for Cawston, Market place  
 Pumphrey Albert Charles, beer retailer, Dunkirk  
 Purdy & Holley, solicitors, Market place  
 Purdy Thomas Woods B.A. solicitor & commissioner for  
 oaths (firm, Purdy & Holley), clerk to the justices, to  
 the Navigation Commissioners & to the Commissioners  
 of Taxes, Market place



Reading Room & Library (H. J. Gidney, president;  
 E. D. Browne, hon. sec.), Market place  
 Rich George (late of Ship hotel, Mundesley), Eng com-  
 mercial hotel & railway refreshment rooms & job-  
 master, Norwich road  
 Riseborough Mary Ann (Miss), aparts. Commercial road  
 Robb William, travelling draper, Commercial road  
 Roe Frederick W. C. relieving & vaccination officer for  
 Buxton district, Aylsham union & registrar of births &  
 deaths for Buxton sub-district, Cawston road  
 Rogers Samuel, market gardener, Buxton road  
 Roofe Dora (Mrs.), tobacconist, White Hart street  
 Rought William, gardener, Gawston road  
 Rout Frederick Richard, boot & shoe maker, Market pl  
 Sapwell Col. Benjamin Beckham V.D., J.P. landowner &  
 farmer, Sankence, Cawston road  
 Sapwell Benjamin Beckham, jun. B.A., LL B., M B.,  
 B.C.Cantab.physician & surgn.The Grange, Gromer rd  
 Sayer William John, insurance agent, Buxton road  
 Shephard Philip Candler J.P., M.R.C.S.Eng., L.S A.  
 surgeon, Abbot's hall  
 Shreeve Henry H. dealer in corn, coal, flour & pollards,  
 Millgate street & Midland & Great Northern station  
 Slipper Richard Stanley James, farmer, Stonegate  
 Soame Charles, farmer, The Spa  
 Stackwood Arthur George, carpenter, Hungate street  
 Stearman Sophia (Miss), dress maker, Hungate street  
 Stevens Arth. threshing machine propr. Commercial rd  
 Stevens Richard, threshing machine propr. Cawston rd  
 Steward Donald Hy. C.E., M.R.S.I. main road surveyor  
 to the County Council for Aylsham dist. Cawston rd  
 Steward Horace Lindley, grocer, Norwich road  
 Stoner Edward Thomas, watch maker, jeweller & cycle  
 agent, Red Lion street  
 Sutton & Co. carriers (W. R. Larke, agent), Red Lion st  
 Sutton Hector, farmer, Bure Valley farm, Burgh road  
 Sutton Jesse, farmer, Spratts Green farm, Burgh road  
 Swann Stanley, greengrocer, Hungate street  
 Talbot Bertram William Chetwynd, land steward to the  
 Marquis of Lothian D.L. The Dell, Heydon road  
 Territorial Force Battalion (5th) Norfolk Regiment (G  
 Co. Aylsham detachment; Capt. T. W. Purdy; Sergt.  
 Thomas Davis, drill instructor), Pound road  
 Tuddenham Frances M. (Mrs.), butcher, Cawston road

**Tuddenham John Henry**, builder, contractor, brick-layer, plasterer, undertaker & cabinet maker, Burgh rd  
 Tuddenham Sidney, insurance agent, Hungate street  
 Turner Benjamin, painter, Hungate street  
 Tuttle Arthur George, fruit grower, Millgate street  
 Underwood Henry William, hair dresser, Red Lion street  
 Vincent Henry, tailor, White Hart street  
 Wade Harry, cycle agent, Pinfold street  
 Wade Walter, builder, Pinfold street  
 Ward & George, family grocers, provision merchants & drapers & wine & spirit & ale & stout merchants, Market place  
 Ward William, farmer, Frogshall farm, Cawston road  
 Warne Charles Henry, farmer, The Spa  
 Warner Arthur, gamekeeper to J. C. Cheetham esq. Dole house, Cawston road  
 Waters Frederick Charles, farmer, The Spa farm  
 Weatherbed James C.R.S.I. inspector of nuisances to the Rural District Council, Cawston road  
 White Alfd. Smith, saddler & harness ma. Red Lion st  
 Williamson Alfred, boot maker, Cromer road  
 Williamson Herbert James, Cross Keys P.H. Red Lion st  
 Winterborn George, millwright, Cawston road  
 Winterborn Sarah Ann (Mrs.), shopkeeper, Cawston rd  
 Woodhouse John, fishmonger, White Hart street

### And Finally . . .

I know I should not find amusement in others' misfortunes, but this all happened a long time ago and everyone is long dead by now. A newspaper cutting dated December 31st 1884 reads:-

**ACCIDENT ON THE EASTERN AND MIDLANDS RAILWAY** - On Monday morning, a man named ----- who is the ganger of platelayers was proceeding on a trolley from his residence at Abel Heath to Aylsham station when it seems he miscalculated the time of arrival of the train from Corpusty, so that it overtook him near the Cromer Road Bridge . . . throwing him and his trolley a considerable distance off the line . . .

I have this mental picture of a scene from *St. Trinians Great Train Robbery*, of schoolgirls and bank robbers frantically pumping a little rail trolley up and down the line, with a large steam engine in hot pursuit, but sadly in this case the results were not so funny.