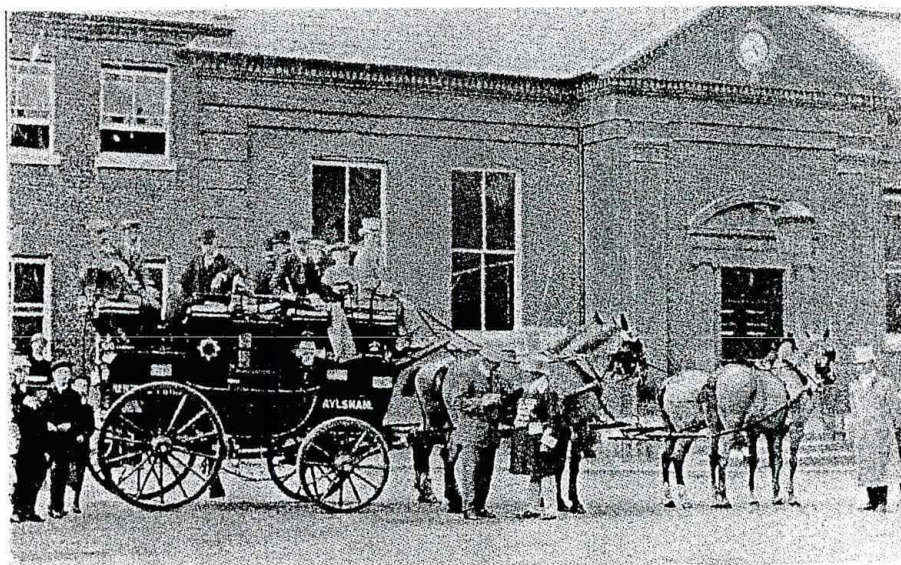


AYLSHAM LOCAL HISTORY SOCIETY



Vol. 6 No.7

September 2001

The **JOURNAL & NEWSLETTER** is the Quarterly publication of the Aylsham Local History Society. It is published each March, June, September and December, and is issued free to members. Contributions are welcomed from members and others. Contact:-

EDITOR: Tom Mollard, Flint Cottage, Calthorpe Rd. Erpingham. Norwich
NR11 7QL. Phone Cromer 761638
mollard.tom@talk21.com

CHAIRMAN: Peter Holman
Aylsham 733434

SECRETARY Betty Gee
Aylsham 734834

CONTENTS

An Aylsham 'Bard' by Ron Fiske.....	195
Early Photography, by Derek Lyons.....	199
Society News	202
Annual General Meeting.....	203
Diary Dates.....	204
The Bale Oak, by Carrie Miller.....	205
An Aylsham Tragedy, by Elizabeth Gale	207
Tithe Maps	209
Aylsham Market Town Initiative, by Geoffrey Gale.....	210
Aylsham in 1916. [Kelly's Directory 1916]	211
Publications Committee Annual Accounts.....	224

COVER ILLUSTRATION: An example of some early Aylsham photography, one of several in the Aylsham Archives. See Derek Lyons's article on p.199



AYLSHAM LOCAL HISTORY
SOCIETY

JOURNAL & NEWSLETTER

Vol. 6

No. 7

AN AYLSHAM 'BARD'

Ron Fiske

Being an avid collector of local history material, my eye (and pocket) was quickly taken by the following entry in a local book-seller's catalogue:-

AYLSHAM - an old school exercise book, crammed with cuttings from the *Norwich Mercury* relating solely to Aylsham. 1859-1868. pp.80+ Superb research source.⁽¹⁾

On receipt the exercise book proved to be a hand-made book, which was partly filled by a young, but well-formed hand, and over which was pasted the cited newspaper cuttings. The remainder of the book was devoted to some verse by a more mature hand. One such entry revealed the identity of the compiler:-

"Acknowledgment of a Valentine"

*Dear Sir - Accept these hearty thanks of mine
for your right welcome valentine.*

Soon as the carrier brought the hamper

My anxious boys began to scamper

Nor waited patiently till bid,

But cut the string and op'd the lid.

Soon as they saw the piece of meat

exclaimed, "why, this is quite a treat"
And when they viewed the stunning chickens
Cried, "these will give us two good pickings"
Since fowls from Dilham emigrated
With us they have not been located.
No Cochín, Dorking, or Malay
has blest our eyes for many a day.
My wife will either bake, or boil 'em
and I remain yours

W. Mileham

Reference to Sapwell's 'History of Aylsham'⁽²⁾ and our own *Journal*,⁽³⁾ suggested that the Aylsham bard was Walter Mileham, who was responsible for some doggerel verse published to commemorate Queen Victoria's coronation in 1838, and the painter of the Aylsham Regatta in 1850. But these suggestions were contradicted by reference to local directories which reveal that there were two W. Milehams. The first, William Mileham, is listed as an artist and news agent, or reporter, and appears from 1845 until 1864 [White's Directories]. It is he, and not Walter Mileham, I suggest, who is the painter of Aylsham's famous picture, and who is compiler of the 'Exercise Book'

Walter Mileham, who appears in later directories up until 1896 [Kelly's] is described as 'Deputy Superintendent, Registrar of Births, Marriages and Deaths, correspondent to the *Norfolk News*, *Norfolk Chronicle* and *Norwich Mercury*, agent for the Reliance Mutual Life Assurance Society - near Church Terrace [Harrod's directory 1872] and an accountant and newspaper correspondent [Kelly 1896].

To give any concise account of the contents of the exercise book would be impossible. The newspaper cuttings cover the whole panorama of life in Aylsham and the surrounding district. Some appear over the letters "W.M." and one or two contain further examples of his verse. For the moment, however, the reader must be content with a few more examples of W. Mileham's unpublished doggerel:-

‘ACROSTIC’

*Thomas Connold, to you great assistance I send
How often you've prov'd me to be a near friend
Obedient at all times, I am ever to you
Much good have I done, still you whip in the screw.
Austere and unkind! my jaws oft open stand
Still no morsel to cheer, ever galls from your hand -*

*Connold's shop is the place to hear me abused
Oh! to hear him declaim you would be amused.
No quarter he gives, but into that Pit
Named in Scripture assigns me, tho' I've talent and wit.
Over every land, I clothe nations in doubt
Long have I been here, knocked & batter'd about.
Define what I am for I cannot speak out.*

AYLSHAM CORONATION FESTIVAL. JUNE 28, 29, 30, 1938

*The Frenchman may boast of his 'Three glorious days'
and toast them in bumpers of wine;
But as feasting beats fighting, I'll fill up my glass
Be the "Aylsham Festivities" mine -
In honour of Britain's fair Queen of the Isles
Every heart glowed with pure exultation
And the pale yellow morning was greeted with smiles
That witnessed our Queen's Coronation.*

2

*Our merry bells trolled forth a right royal peel
From their tower decked with branches so green;
Whilst the streamers & flags as they danced in the breeze
Seemed to welcome Victoria our Queen.
It appeared as if some great Magician of old
Had arisen to favour our station.*

*And had touched with his wand every house, street & place
To honour our Queen's Coronation*

3

*From the store house of Flora, the market was dressed,
Verdant arches triumphal were made.
A perfect Arcadia the Town looked to be,
And its streets like some old forest glade
Boughs, pictures, birds, stars, garlands, crowns & VRs
Were displayed with a proud emulation -
At the call of the bugle, the cry was away
To the feast of our Queen's Coronation.*

4

*Sixteen hundred with beef, good plum puddings and ale
Were provided - how joyous the scene!
And the knives and the forks what prime music they made
As the band struck up "God Save the Queen"
Then the health of Victoria was drunk with six cheers
And three more !! with renewed approbation
Oh! many glad hearts who that day drunk the toast
Will remember the Queen's Coronation*

5

*Porter, pipes & tobacco next crowned the gay board
(We all know what comfort these yield)
And as evening drew on, pleasure's votaries retired
To enjoy rustic sports in a field.
Here the light country dance, climbing up the soaped pole
Kept the concourse in high excitement.
With the jingling match,⁽⁴⁾ races and jumping in sacks
Closed the day of the Queen's Coronation.*

6

*Her Majesty next day was chaired in full state⁽⁵⁾
Victorious of rare Aylsham Town;
And if for her task, she a sovereign received,
Beat the Queen - as she got but a crown
When the line of procession had finished its march
She alighted from her elevation*

*Joined the dance till bright Sol had long sunk in the West
Then guns fired for the Queen's Coronation.*

7

*The lasses and lads once more tripped the plain
Till the curtains of night closed the scene;
Then the party broke up, giving three hearty cheers
For our youthful and kind-hearted Queen
Long, long may she reign in each true Briton's heart
Is my loyal and firm exclamation,
And long may we live to remember the day
Of Victoria, the Queen's Coronation.*

REFERENCES

1. John L. Gretton. Antiquarian Books March 2001 list
2. John Sapwell. A History of Aylsham. Norwich 1960 pp.116n, 128.
3. Aylsham Local History Soc. *Journal & Newsletter*. Vol 4 p.82
4. For such a match the 'Jingler' with a bell was placed in the centre of a roped square. Ten men are then blindfolded, and placed in the ring, equi-distant between the rope and the jingler, whom they then attempt to catch. The match usually lasted twenty minutes. If the Jingler was caught, the catcher was awarded the prize (usually a pair of breeches). If he escaped, he won the prize.
5. Aylsham's 'Queen' was Miss Smith, daughter of the coach builder. Verse 6 was struck through, no doubt because Miss Smith was accounted above the crown!

—ooOoo—

EARLY PHOTOGRAPHY

Derek Lyons

The Aylsham Archive contains several hundred photographs, some good, some not so good and some decidedly poor, but they all deserve a place in the archive as a record of the town's history. They range in age from nearly 150 years to about six months. All are interesting, but I particularly admire those from the 19th century, when

photography was an involved and skilful process. The quality of these Victorian photographs is astonishingly good, possibly because only the best survive, but also I believe, because those early pioneers really knew what they were doing and trained themselves not only as photographic technicians but taught themselves to view the world through their lenses with an artists eye.

Photography became a practical proposition in 1839 when Louis Daguerre introduced his "Daguerreotype", a process that printed a photographic image onto a copper sheet coated in silver. In spite of their excellent quality and almost instant popularity, two factors limited the Daguerreotype's long term viability. Firstly, they could only be viewed from one angle, otherwise a negative image would be seen. Secondly, each picture was unique, it was not possible to copy the original. William Henry Fox Talbot overcame both of these problems when he discovered the latent image in the 1840's and introduced his "Calotype". The waxed paper negatives this system produced could be printed any number of times, and always with a positive image. It set the standard from which all future photography developed.

Prints from paper negatives lacked the sharpness of the Daguerreotypes. Glass was the obvious alternative but difficulty was experienced in stopping the photo sensitive chemicals being washed off during processing. Limited success was achieved by coating the glass with egg white but a better solution was found by a sculptor, Frederick Scott Archer, who used a wound dressing called "collodion " (gun-cotton dissolved in ether) to improve adhesion. This had been tried by others but they had allowed the plates to dry before exposing them in the camera. Archer took his photographs whilst the plates were still wet and found "the sensitivity to light so enhanced that exposures of less than three seconds became possible". This revolutionised photography and the "collodion wet plate" system, together with some minor variations, became the accepted technique for a number of years. Later the "dry plate" was invented, which held sway until challenged by George Eastman's "roll film".

Making a photograph in those early days was a lengthy and involved task. The chemicals had to be prepared, then the glass plate was coated with collodion and immersed in the photosensitive solution.

This, of course, had to be done in the dark. Enlargers hadn't been invented so the plates, and consequently, the cameras were large and unwieldy. The prepared plate was loaded into the camera while still wet and everything transported to the scene to be photographed before the collodion dried.

Then it was back to the darkroom to develop and print the picture. The length of exposure required varied with the dryness of the collodion so the wonder is that anyone ever got it right. Roger Fenton, who photographed the Crimea war for the Illustrated London News used the collodion wet plate process. He reported having great difficulty in stopping his plates from drying out in the blazing summer heat. The photographers who recorded those moving scenes from the American Civil War of battle-torn landscapes peopled only by dead soldiers, must also have come up against this problem. These early war photographers, working from horse-drawn vans which served them as darkroom, storeroom and living quarters, made some very remarkable pictures under most difficult conditions.

The directories show there were a number of photographers working in Aylsham through the years. Amongst the early ones was a man calling himself Juba. We have four of his pictures in the archive, showing views of the Market Place in 1876. Even earlier is a picture of the south side of the Market Place dated 1860, taken by a man called Finch. The oldest in the collection carries the date 1856 and shows the north east corner of the Market Place before the Town Hall was built. Unfortunately, we don't know the name of the photographer.

Many of the photographs in the archive are postcards of street scenes and rural views from the early part of the 20th century. With the introduction of the "dry plate" and the "roll film", cameras became smaller and more portable and location photography became easier. All over the country publishers commissioned pictures of local scenes to satisfy a constantly growing demand from the public. Which is just as well for the town archive, since without such a rich source of material its photo collection would be infinitely poorer.

—ooOoo—

SOCIETY NEWS

Humphry Repton - In each issue there seems to be something to add about Repton. Quite recently there appeared a new book about him. This is *Humphry Repton; landscape gardening and the geography of Georgian England*. The author was Daniels, and the book, priced about £40 was published in the USA. I have no note of the publisher, nor the author's first name. There are copies in the County Library, and Ron Peabody discovers that the library copies are in the reference library or the Local Studies library. From neither of these collections is it usually possible to borrow copies. It seems unfortunate that no copy was placed in Aylsham library where we have the strongest local connection with Humphry Repton.

However, after a few enquiries from Ron, the library service has decided to add another copy to stock. This copy will move between branches, but it will be starting its life in Aylsham branch very shortly. So thanks to Ron Peabody there will be an opportunity for Aylsham readers to borrow it, instead of having to travel into Norwich where they would have had to sit in the reference library to read the book.

VISIT TO WISBECH - Wisbech is a town of many surprises. Most of them are hidden from the casual visitor. They are pleasant surprises, and full of historical interest. In its day, the town was a very important centre of trade and industry. The River Nene flows through it. Before the railways came the Nene was a major route. Goods were carried from inland to the Wash and further. Naturally, goods flowed the other way as well. Woad, a local product, was part of this trade. Since it was both grown and processed locally, this vegetable dye was shipped directly to Yorkshire for use in the woollen industry. This came to an end with the development of chemical dyes. You can find out about the woad industry in the Wisbech and Fenland museum. This is housed in a building which exists because of the munificence of two Peckover brothers. This Quaker family, with others, founded schools and circles of intellectual discussion which led to the demand for a museum and then they provided the necessary money.

Peckover House, the banking family's home, is now owned by the

National Trust. It is a fascinating place to visit, but the big surprise is the garden. This wonderland is not a strip as narrow as the house itself: it sweeps round and behind outbuildings, a Society of Friends Meeting house, and a row of houses all erected by the Peckovers. It would take a great deal of space to describe the garden in detail, but the trees are of special interest. Family members travelled abroad and came back with specimens. These are now mature, being some 150 years old, and magnificent.

When we visited Elgood's Brewery, we were in for another surprise. Behind the brewery is a four-acre garden. Once more, it was the trees which caught my eye, and I know I was not alone in this reaction. The trees came from the same source as those in the Peckover House garden. Apart from the trees, there was a great contrast between the two gardens. Some of us preferred one, some the other, but both were a joy.

Going back to the start of our visit, the first house visited was the birthplace of Octavia Hill. She was one of the founders of the National Trust, but that was only one activity of many. Coming from a family concerned with social problems, her father having founded a school just as had the Peckovers, she became involved in the movement to improve the plight of the poor living in slums in London. She managed houses which had been purchased by John Ruskin and this gifted woman went on to campaign for green spaces in cities as well as the preservation of the best of the past in the National Trust.

Betty Gee, our society's Honorary Secretary, organised this trip and earned praise from those who made the journey. She pointed out to us before we went that the view from the Town Bridge which spans the Nene was well worth a moment or two of our precious time. Her tip was good. The Peckover houses on the North Brink and the house where Octavia Hill was born on the South were seen well and we had a good overview of the town. This was a worthwhile and illuminating visit, well organised and memorable.

Peter Pink

ANNUAL GENERAL MEETING - The Annual general Meeting will be held at the Friendship Club on 4th. October 2001. All existing committee members and officers are prepared to stand again, so unless other nominations are received before the AGM, there will be no need

for an election, and the Programme card for next year can be prepared in advance and ready for distribution to members renewing their subscription at the AGM. **Subscriptions are due for renewal from 1st. October, and are the same as last year, i.e. £7 single; £12 double. Payments should be sent to the Hon. Membership Secretary**

Notices of the AGM, from the Secretary, should accompany this copy of the *Journal*.

There should also be a notice of the proposed visit to the Castle Museum.

VISIT TO NORWICH CASTLE MUSEUM

After much effort, our secretary has at last been able to arrange a visit to the recently refurbished Castle Museum. This will take place on **Tuesday 18th. September**, cost £3.40 per head. This is a reduced price of admission, but we must have at least 15 people to qualify. It has taken a considerable amount of effort on Betty's part, and it is hoped there will be good support for this visit.

Application forms should be inside this copy of the *Journal*
Please complete and return by the date specified.

DIARY DATES

The programme for next year has been arranged, and details will be given at the AGM and listed in the new programme card. Details of the public lectures are given below:-

4th. October - Annual General Meeting at 7pm [**please note 7pm not 7.30pm**] followed by "*Tin Tabernacles*" a talk by John Bracey.

25th. October - *"Norfolk Country Houses from the air"* by Derek Edwards

22nd. November - *"How we used to live - 1850-1950"* by Peter Larter

24th. January 2002 - Winter Party. [details to follow]

21st. February - *"Land of the Iceni - the Iron Age in Norfolk"* John Davies

21st. March - *"The work of the Norfolk Records Office"* by John Alban

25th. April - *"The ins and outs of the workhouse"* by Joy Lodey

The above are all on Thursday evenings at 7.30 pm unless otherwise stated, at the Friendship Club.

A weekly course on **Norfolk Ships and Seafarers**, given by Charles Lewis will commence on Tuesday, 25th. September 2001, at 2pm at the Meeting House, Pegg's Yard. Fee £45. Details from Peter Holman. (01263-733434)

THE BALE OAK

Carrie Miller

The village of Bale stands between Holt and Fakenham, It is mentioned in the Domesday Book, and is also called Bathele.

The Bale Oak was reputed to be upwards of 500 years old. At between two and three feet from its base, it measured 36 feet in circumference, and one of its branches was 75 feet long indicating the magnitude of the tree. It is possibly the remains of a Celtic or Saxon grove in which Christians later built their church of All Saints. It stood on the left of the main path outside the church gates. In the 15th. Century window of the church, composed of Norwich glass fragments, trailing oak leaves and acorns can be found.

By 1632 the oak was probably showing signs of advanced age, and overhanging the churchyard too far. The churchwardens accounts state,

"For felling one arme of the oake and carting the same to the cost of the church 5s 0. . . . for the timber carieng and sawing on the pit"

A register of 1617 mentions other oak trees being planted.

"Thomas Smith sett the oake which now stands on the greene in the year 1614"

Another record states, in 1716:-

"Thomas Bullen sett the two oakes which now stand at the southwest and northwest corners of the green"

These latter trees - which are such a fine feature of Bale today, may have been evergreen oaks, and identifiable as a landmark from miles around. These oaks were introduced into England about the end of the reign of Queen Elizabeth I.

A note attributed to the Norfolk historian, Francis Blomefield, (1705-1752) published in the Frere Manuscripts, by the Norfolk Record Society, reads:-

"A great oak at Bathele, near the church; hollow. . .so large that ten or twelve men may stand within it. A cobbler had his shop and lodge there of late and it is, or was, used for a swinesty. Another very fine oak stands near it."

In 1795 the Bale oak was severely pollarded, and the Hardys from the nearby village of Letheringsett purchased the wood and the bark for tanning. The oak never recovered from this drastic treatment, and a poem was written about the tree in this state, which has been learnt and passed down to villagers to this very day:-

*Here I stand, in disgrace
Once the wonder of this place.
My head knocked off, my body dead
All the virtues of my limbs is fled.
'Tis all my fear that I should fright
the traveller's horse by night.*

*So cut me down, it's my desire
Commit me to the blazing fire,
And when you see me burn and smoke,
say, 'That's the end of old Bale Oak'*

By 1840 the oak had become dangerous. The parish officers would not take any responsibility for anyone getting injured. The Lord of the Manor, Sir Willoughby Jones, Bt. had the tree taken down and carted off to Cranmer Hall near Fakenham. The wagons employed were decked with flags and all of Fakenham turned out to see them pass through. The old pub of Bale was called *The Angel and Oak*, from 1836 to 1845. *The Oak* inn during 1879, then the *Bale Oak* in the 1880s.

Oaks in the hedgerow at the top field of Slade Road are said to have been grown from acorns of the old oak. The place of the famous oak is commemorated for ever in the small spinney by the church, known as the Bale Oaks. It became National Trust property in 1919, along with Bulfer Grove. The village will never forget the Old Bale Oak.!

—ooOoo—

AN AYLSHAM TRAGEDY Elizabeth Gale

In the introduction to my book *'Aylsham Inns and Public Houses'*, I wrote that there were inevitable gaps in this history. One gap has now been filled by Derek Lyons, Assistant Aylsham Archivist, who has recently discovered a relevant item in a scrap book of newspaper cuttings in the archives. He thought that this one would be of particular interest to me and I am grateful to him for passing it on. This newspaper article is re-produced in full detail.

PENSIONER'S SHOCKING DEATH AT AYLSHAM SUICIDE WITH GERMAN RIFLE

A verdict of 'Suicide whilst in an unsound state of mind' was returned by the jury at an inquest held by Mr H.R. Cutley, as Deputy Coroner for the liberties of the Duchy of Lancaster at Aylsham on

Saturday on the body of Thomas Inglis, aged 45, the landlord of the Swan Inn, Hungate Street, who was found with a gun shot wound in his head on Friday morning.

The evidence of the widow showed that the deceased, who formerly lived at 21, Angel Road, Norwich, took the Swan Inn last November. The deceased, who was a pensioner, served in the Cameroons, West Africa, where he was at the outbreak of the war. Last May he was invalided out of the army, and suffered from a disease of the heart and ague, which he contracted while serving abroad. Lately he had suffered much pain, and no doubt his mind had become unhinged. Since he had been at Aylsham he had been attended by two doctors. On Friday morning he came downstairs at about ten o'clock and after sitting in front of the fireplace took up the poker, as he said to stir the fire, although there was no fire. He then went into the taproom, where Mrs. Inglis spoke to him about some linoleum which was to be put on the floor. Shortly afterwards she was called to the bar and when there, heard the report of a gun from the bar parlour. She went back to the taproom and then upstairs to the bar parlour, where she saw her husband in the easy chair with a gun between his knees. He was severely injured in the head, and was groaning heavily. The gun was a German weapon, which the deceased kept as a curio, and which had been used by a member of the German Army whom the deceased shot when in the Cameroons. Mrs Inglis had not known that the gun could be used, but was aware that the deceased who told her it could not be used, had some ammunition. When the deceased left the taproom he must have taken the gun, which was used to keep a door open, with him.

George Arthur Neale, a postman, said that at 12.25 noon, whilst he was in the house, he heard a noise as of a door slamming. Mrs. Inglis who said she did not know what it was, went upstairs, and returned and said her husband had blown his brains out. Witness went upstairs and finding that the top of the deceased's head was blown away, sent for Dr. Morton and the police. Deceased died in a few minutes. On the Thursday evening the deceased appeared strange in his mind, and said he wished he was dead, as he suffered a great deal. Witness had often seen the rifle, which the deceased said he had brought from the war and was out of action.

Police constable Skipper said that near the deceased's right foot was a clip containing four live cartridges and there was a spent cartridge in the rifle, which appeared to be out of order although it had been fired.. Witness formed the opinion that the deceased fired the weapon by pressing the trigger with his finger. [29th MAY 1916]

TITHE MAPS

The most recent issue of that excellent newsletter issued by the Norfolk Record Office [*Issue No.4 August 2001*] carries an interesting article about Tithe maps. These are often an important and essential source for studying local history, but can be difficult to gain access to, or even difficult to work on, because of their shape and size. If you have access to the internet, then some of these problems may be overcome in the future. Below is the article in full:-

“TITHE MAPS ON THE INTERNET” - On July 2nd, the New Opportunities Fund awarded the Cultural Services Dept of Norfolk County Council £315,300 to digitise maps and aerial photographs... The project plans to bring together several heavily-used sets of records which are housed on two separate sites and provide access to them via the Internet. Tithe maps which are held by the NRO, and aerial photographs, which are housed by the Museums and Archaeology Service, will be accompanied by other maps held by the Library Service.

The NRO will digitise a complete set of Tithe maps, covering almost all of the county. Norfolk has more titheable districts than any other county in England and Wales [690 including the districts of the Lothingland Deanery, now in Suffolk] The tithe maps date from 1836 to c1850, and they record landholding, settlement and landscape patterns during this time.

Three sets of tithe maps were originally produced. The first set was held by the tithe commissioners in London and is now deposited at the PRO in Kew. A copy was held by the diocese and another copy was held by the parish. The NRO will digitise the tithe maps of both the Diocese of Norwich and the Diocese of Ely. However, some of these maps are too fragile or incomplete to digitise. Where this is the case, either the tithe commissioners' map or the parish copy will be used to ensure the most complete coverage of the county as is possible.

The project leaders hope that the maps and photographs will be available by early 2003.

As a postscript, and purely in the cause of assisting any of our members who might be looking into their family history, the same issue of the Newsletter records that a wealth of prison records from Norwich prison have recently been deposited in the Norfolk Record Office. !!!!

—ooOoo—

Aylsham Market Town Initiative

Geoff Gale

Some members will have seen reference to the “Aylsham Market Towns Initiative” in the Aylsham Post or the Town Council papers and wondered about its intention.

It is a newly developed scheme to bring fresh funding into the town and the surrounding area. There have been a number of similar regeneration schemes in the past. Some of them failed because the bodies promoting them did not have a sufficient understanding of the area's needs. This new scheme is more carefully organised and the Community Conference which took place earlier this year provided a basis for the initiative. Two groups have been formed representing the town, parish, district and county councils and other local Aylsham bodies. The first of these groups will provide an account of Aylsham and the surrounding area, a “Healthcheck” to show its strengths and weaknesses. It should provide details of the society, environment, employment, retail, business, culture and heritage of the Aylsham area. The second group will then draw on that information to identify improvements and devise projects based on these needs. These “Projects” will then lead to the application of funding to support specific proposals.

It is intended that different societies will contribute to the “Healthcheck” and the Aylsham Local History Society would certainly play a part in the initial survey of Aylsham, its surrounds, heritage and culture. Although some of this early work has to be ready by October the timetable is sufficiently flexible to allow other proposals to come in later.

AYLSHAM in 1916

Working our way through the county directories, we have now reached Kelly's Directory for 1916. This was the first directory to appear after the outbreak of the Great War. What seems most interesting to me is the absence of any reference whatsoever to the fact that a world war had been raging for the last two years; a war which by this time must have had a very considerable effect on the lives of the people of Aylsham.

The directory, however, ignores it, and reads like a reprint of the earlier directory (1912), and concerns itself entirely with the mundane affairs of a small town. The townsfolk of Aylsham knew only too well how the war was affecting their lives. Many of the young men had already left the town. The day after the outbreak of war in 1914, the Aylsham detachment of the 5th. Battn of the Norfolk Regt. had marched bravely down to the GER station and departed to join the rest of the battalion at Dereham. By the time this directory appeared many of these men had already been killed at the Dardanelles, and even more would be lost the following year at Gaza. There would already be many families in the town who knew what the war meant.

In addition to the absence of many local men, the town was busy with military personnel from other parts of the country who were stationed here. Photographs exist of troops billeted in the town, and in the archives we have examples of such events as a concert held in the Town Hall on 20th. September 1916 by men of the 320th. Brigade of the Royal Field Artillery. No-one could be unaware of what was happening in the world outside the town. Perhaps the 1916 directory was largely a reprint of its predecessor of 1912 simply because people had more on their minds than dealing with directories.

Finally, two curiosities caught my eye. Listed in the commercial section is a Mr Edward Carr, living at Fairleigh Terrace. Where was, or is, Fairleigh Terrace? In the same section is listed Walter Wade, builder, of Elliswicke. Again, where was Elliswicke?

AYLSHAM - mentioned in Domesday as "Elesham", is a market and union town, head of a county court district and parish on the banks of the River Bure, which is navigable hence to Yarmouth; having a station on the Great Eastern

Railway and another on the Midland & Great Northern Joint Railway, and is 12 miles north from Norwich, 7 west from North Walsham and 125½ from London. In the Northern division of the county, South Erpingham Hundred and petty sessional division, rural deanery of Ingworth (South Division), archdeaconry and diocese of Norwich.

The town is lighted with gas, supplied by the Aylsham Gas Co. Ltd. There is no water supply except from wells. The church of St. Michael is a building of flint in the Decorated and Perpendicular styles, and was erected c1380 by John of Gaunt, Duke of Lancaster, the court of whose duchy was once held in this town. It consists of a chancel with aisles and vestry, clerestoried nave of six bays, aisles, transepts, south porch with parvise, and an embattled western tower with crocketed pinnacles and a small spire, and containing a clock and 10 bells, re-hung, and the belfry repaired in 1890 at a cost of £285. The chancel retains three sedilia and a double piscina, and there are also piscenae in the south aisle and the south transept. The font is enriched with bas-reliefs of the emblems of the four evangelists, the instruments of the Passion, and the arms of the Duke of Lancaster, with other armorial insignia. Of the rood screen, erected in 1507 principally at the cost of Thomas Wymer, worsted weaver, only the lower part now remains and is adorned with painted figures of apostles and martyrs, and has an inscription in Latin to Thomas Wymer and Joan and Agnes, his wives. The remains of the former arcading of the screen are now incorporated in the reredos, constructed out of carved wood from various parts of the church.

The tomb of Wymer, with brass effigy in shroud and the date 1507, is in the church. Here is also a brass, with effigies as skeletons in shrouds, to Richard Howard, citizen and Sheriff of Norwich, who in 1488, built the church porch, and died 13 January 1499, and to Cecilia his wife. There are other brasses to Thomas Tylson, B.A., rector c1490, with effigy in almuce and scrolls, and to Robert Farman and Katherine, his wife, c1490, and there are effigies of a man and his wife, much worn. The church also contains monuments to the families of Jermy, Drake, Wrench, Norgate and Rushburgh. There is a monument, somewhat mutilated, to John Jegon S.T.P. Bishop of Norwich from 1602, who died 13 March 1617.

The east window, the tracery of which has been restored, is decorated with stained glass, placed in 1842-43, and representing apostles with various devices, and the armorial bearings of the Hobarts, Earls of Buckinghamshire; those of the See of Norwich, impaling Stanley; the Duchy of Lancaster, and others. There is another stained window to eight former vicars, and one containing some beautiful specimens of old glass, inserted at the expense of the late Rev. E.T. Yates, a former vicar, together with the armorial bearings of his family, and of S. Pitman, Esq, the lay impropiator of the parish, and the Dowager Lady Suffield.

The old organ was presented by the Rev. E.T. Yates, who also contributed to the restoration of the church in 1852, but a new organ was provided in 1911 at a cost of £700. The pulpit dates from about 1600. The eagle lectern is modern. There were once several chantries in this church, one of which was founded 8 July 1534 by Robert Jannys, who also founded the Free School. The communion plate includes a chalice and paten of 1567, besides other pieces of later date. In a recess in the churchyard is the grave of Humphry Repton, the celebrated landscape gardener, who died 24 March 1818. There are 850 sittings. The register dates from the year 1653. The living is a vicarage, net yearly value £320, including 5 acres of glebe, with residence, in the gift of the Dean and Chapter of Canterbury, and held since 1888 by the Rev. John Gurney Hoare M.A. of Trinity College, Cambridge, Hon. canon of Norwich, rural dean of Ingworth (Southern Division) and surrogate. The Ecclesiastical Commissioners hold the larger portion of the great tithes

A mission room was built in 1890, on ground adjoining the churchyard, at a cost of £400, by the late Mr. B. Cook. There is a small Catholic church in White Hart St. The Baptist chapel is in White Hart St. It was founded in 1791 and has sittings for 450 persons. There is a Primitive Methodist chapel on the Cawston Rd. and a Wesleyan Methodist chapel in White Hart St. a Reformed Wesleyan chapel in Millgate, and a Gospel Hall on the Cawston Rd. Adjoining Mr. Philip Shephard's residence is a Catholic chapel in which services are held occasionally.

The cemetery, of two acres, formed in 1855 at a cost of £600, was enlarged in 1900 by the addition of 1½ acres and is under the control of the Parish Council. The Town Hall in the Market Place, now the property of the town, is a structure of red brick and has a reading room and literary institute attached. The John Soame memorial pump was erected in 1912. A fire brigade is maintained here. Fairs are held yearly on March 23rd, and the last Tuesday in September. Cressey's charity of £31 6s yearly is given in doles, and is under the control of the parish council.

Abbot's hall, erected in 1610 by a member of the Wood family and now the property and residence of Philip Candler Shephard Esq. J.P. stands on the site of the ancient moated residence. The Manor House on the Norwich Road, the property and residence of Lt.Col. H. J. Bowman was built in 1608 by Bishop John Jegon, of Norwich, who died in the house in 1617. It contains some very fine old oak. There are four manors - Aylsham Lancaster manor belonging to the Marquess of Lothian; the Vicarage manor, belonging to the vicar; Sexton's manor, commonly called "Aylsham Wood" the property of the trustees of the late Thomas Copeman Esq. and Bolwick manor, belonging to W. S. Calvert Esq. The principal landowners are the Marquess of Lothian, Thomas Woods Purdy Esq., Mrs Louis Buxton, Philip Candler Shephard. Esq. Col. Benjamin

Beckham Sapwell, Col. J. B. Stracey-Clitherow and Lt. Col. E. R. Kerrison, RA C.M.G. and a few smaller owners. The area is 4,305 acres of land and 25 of water; the rateable value £11,799. In 1911 the population of the parish was 2,627 including 12 officers and 137 inmates of the Poor Law Institution. Parish Clerk and Sexton of cemetery, George Neale, Town Hall.

Public establishments, local institutions &c

Post - M.O., T & Telephonic Express Delivery office - Harcourt Augustus McCreedy, postmaster. Deliveries at 7 and 10.30 am. and 3 (callers only) & 5.45 pm. dispatches at 4.50 and 9.35 am. and 12.15, 2.20, 5.40 and 7.45 pm. Sunday delivery 7am, dispatch 5pm.

Wall letter boxes - Millgate St, cleared 8.30 and 11.30 am, and 5.10 and 7.40 pm. week days only. Cawston Road cleared 8.20 & 11.45 am, and 4.45 and 7.25pm week days and 8.30 am Sundays. Cromer road cleared at 8.15 & 11 am. & 5.5 & 7.45 pm weekdays and 8am Sundays. Sankence cleared at 7.20 & 11.25 am, & 6.50pm; Sundays 7.20 am. Drabblegate cleared at 8.20 & 11.20am. & 7.30pm. Sundays 8.20am. Railway station (GER) cleared 9.50am & 12.30; 5.50 & 8.10pm weekdays only

Justices of the peace for South Erpingham petty sessional division

Marsham, Major Henry Savill D.L. Rippon Hall, Hevingham, Chairman.
Birkbeck, Wm. Jn. D.L. Stratton Strawless Hall,
Bolton, Walter Henry. Oulton Hall, Aylsham
Buxton, Walter Louis, Bolwick Hall, Marsham.
Kerrison, Lt. Col. Edmund Roger Allday, Burgh Hall.
Orford, Earl of. D.L. Wolterton Park, Erpingham.
Patteson, Frank Eugene, Great Hautbois House.
Sapwell, Col. Benjamin Beckham. V.D. Sankence, Aylsham.
Sewell, Philip Edward. Dudwick House, Buxton
Shepherd, Philip Candler. Abbotts Hall, Aylsham.

The Chairman for the time being, of the Aylsham Rural District Council is an ex-officio Justice of the Peace.

Clerk to the Justices: Thomas Woods Purdy. B.A. solicitor, Market Place.

Petty Sessions are held at the Town Hall every other Tuesday at 11. The following places are included in the Petty Sessional Division:-
Alby-with-Thwaite, Aylsham, Banningham, Banningham Parva, Belaugh,

Blickling, Booton, Brampton, Burgh-next-Aylsham, Buxton, Calthorpe, Cawston, Colby, Coltishall, Corpusty, Erpingham, Hautbois Magna, Hevingham, Heydon, Ingworth, Irmingland, Itteringham, Lammas-with-Hautbois Parva, Mannington, Marsham, Oulton, Oxnead, Saxthorpe, Scottow, Skeyton, Stratton Strawless, Swanton Abbot, Tuttington, Wickmere & Wolterton.

Aylsham Rural District council

Meets at the Poor Law Institution, on Tuesdays alternately at 10.30am.

Chairman. William Case, Tuttington, Aylsham.

Clerk. Henry James Gidney, Old Bank House, Aylsham.

Treasurer. Henry Birkbeck, Barclay & Company Ltd.

Medical Officer of Health. Herbert Hatfield Back. M.B. Lond. M.R.C.S. Eng.
Acle, Norwich.

Inspector of Nuisances, James Weatherbed, C.R.S.I. Burgh Rd.

Surveyor of Highways. Leonard J.Preston, Buxton Road.

Public establishments.

Board of Trade Unemployment Fund. Market Place. W. E. Tuttle, local agent.
Cemetery. Henry James Gidney, Clerk.

County Court, held at the Town Hall, bi-monthly. His Honour James Mulligan K.C. judge; Henry James Gidney, registrar and high bailiff. The district comprises the following parishes:- Alby-with-Thwaite, Aylsham, Alderford, Banningham, Barningham Parva, Belaugh, Blickling, Booton, Brampton, Burgh-next-Aylsham, Brandiston, Buxton, Calthorpe, Cawston, Colby, Coltishall, Corpusty, Erpingham, Foulsham, Guestwick, Hackford, Hautbois Magna, Haveringland, Hevingham, Heydon, Hindolveston, Ingworth, Irmingland, Itteringham, Lammas-with-Hautbois Parva, Mannington, Marsham, Oulton, Oxnead, Reepeham-with-Kerdiston, Sall, Saxthorpe, Scottow, Skeyton, Stratton Strawless, Swanton Abbot, Swannington, Themelthorpe, Thurning, Tuttington, Whitwell, Wickmere, Witchingham (Great) Witchingham (Little) Wood Dalling, Wood Norton & Wolterton.

For bankruptcy purposes, this court is included in that of Norwich; Harry Pearce Gould, 8 Upper King St. Norwich, official receiver.

County Police Station. Blickling Rd. Francis Southgate, superintendent; 2 sergeants and 15 constables.

Parish Council; Harry F. Proudfoot, Clerk

Town Hall, Market Place, Harry F. Proudfoot, manager; George Neale, keeper.

Aylsham Union

Board days, Tuesdays fortnightly at the Poor Law Institution at Aylsham

The Union includes the following parishes:-Alby-with-Thwaite, Aylsham, Banningham, Barningham Parva, Belaugh, Blickling, Brampton, Burgh-next-Aylsham, Buxton, Calthorpe, Cawston, Colby, Coltishall, Corpusty, Erpingham, Foulsham, Guestwick, Hackford, Hautbois Magna, Hevingham, Heydon, Hindolveston, Ingworth, Irmingland, Itteringham, Lammas-with-Hautbois Parva, Mannington, Marsham, Oulton, Oxnead, Reepham-with-Kerdiston, Sall, Saxthorpe, Scottow, Skeyton, Stratton Strawless, Swanton Abbot, Themelthorpe, Thurning, Tuttington, Whitwell, Wickmere, Wood Dalling, Wood Norton & Wolterton. The population of the Union in 1911 was 17,344, area 69,341 acres, rateable value in 1916, £92,854

Chairman. William Case, Tuttington.

Clerk to the Guardians. Henry James Gidney, Old bank House, Aylsham.

Assistant Clerk, Edmund Dennis Browne, Burgh Rd. Aylsham.

Treasurer. Henry Birkbeck, Barclay's Bank Ltd. Aylsham.

Relieving & Vaccination Officers, Buxton District, Edward Robert Le Neve, Burgh Rd. Aylsham. Eynsford district, John Shephard, Reepham.

Medical Officers & Public Vaccinators, 1st District, Edward Verdon Perry M.R.C.S. Eng. L.R.C.P. Lond Reepham. 2nd. District. William Dewing Spurrell, Herbert George Berry M.R.C.S Eng. L.R.C.P. Lond. Aldborough; 3rd. District. Ernest Douglas Wolff, L.R.C.P. Lond. M.R.C.S. Eng. Foulsham. 4th. District. Frederick Little M.R.C.S. Eng. L.S.A. The Orchards, Aylsham. 5th. District. Reepham. 6th. District. Augustus Charles Morton. M.R.C.S. Eng. The Beeches, Aylsham. 7th. District. Arthur Henry Habgood. M.B. Cantab. M.R.C.S Eng. L.R.C.P. Lond. Coltishall.

The Poor Law Institution, erected in 1849, is a structure of red brick in the Elizabethan style, erected to hold 619 inmates. Rev. Thomas Barnes, chaplain. Augustus Charles Morton, medical officer, Ernest Charles Groves, master, Mrs Groves, matron.

Aylsham Registration District

Superintendent Registrar, Henry James Gidney, Old Bank House.

Deputy Superintendent Registrar. Edmund Dennis Browne, Burgh Rd.

Registrars of Births and Deaths; Eynsford sub-district. John Shephard, Reepham, deputy Mrs J. Shephard, Reepham. Buxton sub-district,

Edward R Le Neve, Burgh Rd. Aylsham, deputy Mrs E. Le Neve,
Aylsham.
Registrar of Marriages; Harry F. Proudfoot, Market Place, deputy, Harry W.
Marjoram, St. Andrew's, Burgh Rd.

Public Officers

Assessor & Collector of the King's taxes, Harry Walter Marjoram, Burgh Rd.
Certifying Factory Surgeon. Frederick Little, M.R.C.S. Eng. Norwich Rd.
Clerk to the Commissioners of Taxes; Thomas Woods Purdy, Market Place.
Clerk to the Navigation Commissioners; Thomas Woods Purdy, Market Place.
Customs & Excise Officer, Archibald Charles Boast, Burgh Rd.
Town Crier; Harry F. Proudfoot, Market Place.

PLACES OF WORSHIP with times of services

St. Michael's church. Rev. Canon John Gurney Hoare M.A. vicar and
surrogate; 8 & 10.45am and 3.30 & 6.30pm. Wed. 7pm. Fri. 8am. Saint
days 12 noon.
Catholic. Mass occasionally at the chapel adjoining Mr. Philip Shephard's
residence.
Catholic. White Hart St. Mass 3rd Sun. 10.30am. 1st. Thurs. in month
8.30am.
Baptist. White Hart St. Rev. John Read, 10.45am & 6.30pm. Mon. 8pm.
Primitive Methodist. Cawston Rd. Rev. Samuel G. Cobley; 11am & 2.30 and
6.30pm. Thurs. 7.30pm.
Wesleyan Methodist, White Hart St. (Norwich, North Walsham and Cromer
Mission) 10.45am. & 6.30pm. Wed. 7.30pm
Wesleyan Reform, Millgate St. Rev. Edgar Cushing; 2.30 and 6.30pm & no
morning service. Mon. 7.30pm.
Salvation Army, Hungate St. 7.30 & 11am. & 3 and 6.30pm. Mon, Thurs, Fri.
and Sat. 8pm
Gospel Hall, Cawston Rd. 10.45am & 3 and 6.30pm. Tues & Thurs 8pm.

Schools

School Attendance Officer; Arthur Jn. Blades, Cawston Rd.
A Free school was founded here in 1517 by Robert Jannys, mayor of Norwich
in that year and endowed with £10 from from the funds of King Edward
VI's hospital at Norwich, but it is now merged in the present school.
Public Elementary, erected in 1848 for 130 boys, 130 girls and 110 infants.

Frank F. Hodds, master. Miss A.M. Dunthorne, mistress. Mrs. E.J.Dester, infants mistress.

Railway Stations

Aylsham (Great Eastern) Arthur William Finch, Stationmaster
Aylsham Town (Midland & Great Northern Joint Railway) Thomas J. Turbett, stationmaster

Carrier

Norwich-March, from Town Lane Mon. Wed. Fri & Saturday at 9am.
Returning from 'Dukes Palace' Norwich at 4.45pm.

Private Residents

Aldous, Mrs. Red Lion St.	Gahan, Miss. Heydon Rd.
Barclay, Joseph F. The Old Hall	George, Alfred R. Burgh Rd.
Barker, Mrs. Oakfield Rd.	Gidney, Henry Jas. Old Bank House
Barker, Thomas Edmund. Burgh Rd	Gilbert, Misses. Cromer Rd.
Barnwell, Charles Henry. St.Michael's Villas, Cawston Rd.	Gillett, John Howard. Burgh Rd.
Boffee, William John. The Lodge, Oakfield Rd.	Gillman, Mrs. St.Michaels Villas, Cawston Rd.
Bond, Jas F. Fernleigh, Blickling Rd.	Gooch, James. Yew Tree House.
Boulderson, Mrs. Woodgate, Cawston Rd	Gordon, Mrs. Woodbine Vil. Cromer Rd.
Bowman, Lt.Col. Henry James (late 95th. Derbyshire Regt.) The Manor House, Norwich Rd.	Green, Philip. Oakfield Rd.
Browne, Edmund Dennis, Burgh Rd.	Grigson, Rev. Edward. B.A. West Lodge Blickling Road.
Bruce, Stanley W. Oakfield Rd.	Grimes, Herbert. Heydon Rd.
Bullock, Mrs. Pinfold St.	Hoare, Rev. Canon John Gurney. M.A. Vicar, rural dean & surrogate.
Clark, Mrs. James, Commercial Rd	Ingate, Arnold. Cromer Rd.
Coble, Rev. Samuel (Primitive Methodist) The Manse, Burgh Rd.	Ingate, Lewis. Oak Cottage, Cromer Rd.
Cook, Miss, Church Terrace	Ivens, Mrs. Cromer Rd.
Cooper, William Charles P. Bank House Market Place	Ives, Mrs. Market Place.
Cushing, Rev. Edgar. (Wesleyan Reform) Cawston Rd.	Johnson, Major Harold. The Belt
Day, Rev. Theodore Henry Crossman BA, Paradise House	Kelly, John. Burgh Rd.
Durie, Charles. Elgin Ho. Burgh Rd.	Larkworthy, Falconer. Bayfield House. White Hart St.
Edwards, Mrs. Burgh Rd.	Last, Robert Samuel. Pinfold St.
Flood, Mrs. Church Terrace	Little, Frederick. The Orchards, Norwich Rd.
Freeman, Miss. Church Terrace	Lyon-Campbell, Col. Charles Albert (late R.E.) Sankence Lodge, Cawston Rd.
	Marjoram, Harry Walter. St. Andrew's Villa, Burgh Rd.

Meadows, Misses. St. Michael's Villas,
Cawston Rd
Meale, Luther George. White Hart St.
Mileham, Cyril. Bure Acre.
Miller, Herbert. Church Terrace.
Morton, Augustus Charles. The Beeches.
Morton, Miss. Burgh Rd.
Nott, Walter. Cawston Rd.
Page, Alfred. Pound Rd.
Page, Henry. Hill House, Heydon Rd.
Palmer, Miss. Market Place
Partridge, Arthur. White Hart St.
Partridge, James Daniel. Oakfield Rd.
Poll, Albert. Pound Rd.
Purdy, Thomas Woods. B.A. Millgate House
Quantrell, Colin T. Market Place
Rayson, Frederick. Cawston Rd.
Read, Rev. Jn. (Baptist) White Hart St.
Robb, William. North Walsham Rd.
Roe, Robert Leonard. Oakfield Rd.
Roy, Mrs. Gothic House, Hungate St.
Rust, Robert L. Burgh Rd.
Sapwell, Col. Benjamin Beckham, V.D. J.P.
Sankence, Cawston Rd.

Sapwell, Benjamin Beckham jnr. B.A.
LL.B. M.B. B.C. The Grange,
Cromer Rd.
Sewell, Bertram. Heydon Rd.
Shepherd, Miss Charlotte Candler. White
Hart St.
Shepherd, Miss E.A. White Hart St.
Shepherd, Philip Candler. J.P. Abbot's Hall
Shreeve, Mrs. Commercial Rd.
Soame, Mrs. St. Michael's Villas,
Cawston Rd.
Starling, William Frederick, The Cedars,
White Hart St.
Stoner, Edward Thomas. Burgh Rd.
Stroud, Benj. Wm. Commercial Rd.
Sutton, Miss. Cawston Rd
Talbot, Bertram William. The Dell,
Heydon Rd.
Tuttle, Mrs. Hungate St.
Tuttle, Walter Edward. Bankfield,
Commercial Rd.
Ward, Robert H. Burgh Rd.
Wood, Mrs. Burgh Rd.
Woods, Mrs. Oakfield Rd.

COMMERCIAL

Early Closing day, Wednesday

Abbs, Elijah. farmer. Frogshall. Cawston Rd.
Ancient Order of Foresters, Court Pride of Aylsham. (R. Pooely, Sec.)
Pinfold St.
Atkins, James Henry. Wheelwright, Millgate St.
Aylsham Gas Co. Ltd. (Robert L. Rose, Sec. Mark Taylor, manager)
Aylsham Town Hall, (Harry F. Proudfoot, manager; Geo Neale, hall keeper)
Market Place
Balls, Edward Charles, Unicorn PH & fishmonger. Hungate St.
Barclay Pallett & Co. Ltd. millers (steam and water) and coal, coke, corn,
flour and seed merchants. Dunkirk roller mills, Millgate watermill and
M&GN station. Head Office, North Walsham.
Barclay & Co. Ltd. bankers (William Charles Payne Cooper, manager) open
10-3 except Saturday, 9-12.30. Market Place. Draw on Head office, 54
Lombard St. London E.C.

Barker, Thomas. ironmonger, Red Lion St.
 Barnard, Eugenie (Mrs) New Inn, Red Lion St
 Barnwell, Charles Henry. stationer, Market Place
 Beck, Mrs Ellen. smith and machinist, Burgh Rd.
 Blackstone, William Henry. hairdresser, White Hart St.
 Blades, Arthur John. school attendance officer, Cawston Rd.
 Blofield, William. butcher, Red Lion St.
 Board of Trade, Unemployment Fund (W.E. Tuttle, local agent,) Market Place
 Boast, Archibald Charles. customs & excise officer, Burgh Rd.
 Brady & Pert, plumbers, Church Hill
 Breese, James Thomas. tailor, Red Lion St.
 Briggs, George. pork butcher, White Hart St.
 Browne, Edmund Dennis. deputy superintendent registrar & assistant Clerk to
 the Union, Burgh Rd.
 Bruce, Stanley W. auctioneer & estate agent; agent for Bagshaw's manures,
 half-inch and dust bones, nitrate of soda, fish and other salts. Bank St. and
 dealer in modern and antique furniture, Red Lion St.
 Buckingham, Frank Edward. Ph.C. chemist, Red Lion St.
 Carr, Edward. sewing machine agent, Fairleigh Terrace.
 Case, Edward, farmer, the Manor House of the Duchy of Lancaster.
 Cemetery, (Henry James Gidney, clerk)
 Chamberlin, Emily (Miss) ladies school, see Reynolds & Chamberlin
 Clarke, Ernest.. Anchor P.H. Millgate St.
 Clarke, George Probert. ironmonger, Market Place
 Collier, R. & Sons Ltd, corn and coal merchants, Great Eastern station and at
 Norwich
 Constable, Daisy. Miss. dress-maker, Burgh Rd.
 Cooper, William Charles Payne, bank (branch) manager to Barclay's & Co.
 Ltd. Bank House, Market Place
 Cope, Lewis James. Black Boys Commercial Hotel; wholesale & retail cider
 merchant, &c; posting house, Market Place.
 Cripps, William. greengrocer, Millgate St.
 Cross & Co. corn, cake, coal, seed and manure merchants, Gt Eastern Station
 Dale, Miss Rose Emma, tobacconist, Red Lion St.
 Daniels, Thomas Flaxman. farmer, Millgate St.
 Dazeley, Arthur J. cycle dealer, Red Lion St
 Dester, Joseph. chemist, Market Place
 Doidge, David. beer retailer, Cawston Rd.
 Dove, Charles. builder, Sir William's Lane
 Ducker, Samuel, blacksmith. White Hart St.
 Ducker, William, grocer, Millgate St.

Durrell, George. farmer, West End Lodge, Blickling Rd.
 Durrell, George Sidney, farmer, Abbot's Hall farm
 Ewing, John, fruiterer, Red Lion St.
 Field, William. monumental mason. Burgh Rd.
 Finch, Miss Constance, fancy stationer, Red Lion St.
 Francis, Robert. Dog Hotel, Norwich Rd.
 Frankland, Mrs Richard. ironmonger, Hungate St.
 Frostick, John. jobbing gardener, Peterson's Rd.
 Gibbons, James W. confectioner, Red Lion St.
 Giddings, Arthur, baker, Butland Mill & Church Hill
 Gidney, Henry James. solicitor, commissioner for oaths & for taking
 acknowledgments of married women, Clerk to the Guardians and
 assessment committee of Aylsham Union, to Aylsham Rural District
 Council & to the Burial authority, & superintendent registrar of Aylsham
 District, registrar and high bailiff of County Court, Old Bank House.
 Gladman, William, shopkeeper, Cromer Rd.
 Gooch, James, farmer, Hungate St. farm
 Gostling, Henry, farmer Buxton Rd.
 Gotts, Samuel, confectioner, Market Place.
 Grix, Robert, farmer, Rackham's farm Burgh Rd.
 Hall, Charles, monumental mason, Millgate St.
 Hall, Frederick, farmer, The Spa.
 Hall, Miles. Red Lion Hotel, Red Lion St.
 Hill, Frank. teacher of music and organist at parish church. Oakfield Rd.
 Holley, Edward. solicitor and commissioner for oaths, (firm Purdy & Holley)
 Horner, Frederick, R.S.S. blacksmith, Cawston Rd.
 Hubbard & Son. plumbers & painters, Red Lion St.
 Ingate, Lewis & Son. coach builders, Cromer Rd.
 Inglis, Thomas. beer retailer, Hungate St.
 International Tea Co.'s Stores, tea dealers, Red Lion St.
 Jackson, John Loal. farmer, Woodgate farm, Cawston Rd.
 Jex, Bertie. marine store dealer, Cawston Rd.
 Jones, Arthur, market gardener, Buxton Rd.
 Keymer, James. carpenter, Hungate St.
 Kirk, Ernest. Cross Keys. P.H. Red Lion St.
 Larke, Hephzibah, confectioner, Red Lion St.
 Larke, William Robert, outfitter, Red Lion St.
 Larter, Robert, boot repairer, Hungate St.
 Last, Robert Samuel, ironmonger, Market Place.
 Laxen, Albert Richard, saddler etc. Market Place.
 Laxen, Horace, baker, Red Lion St.

Lee, Herbert. farm bailiff to Col. B.B. Sapwell J.P.
 Le Neve, Edward Robert. relieving and vaccination officer for Buxton
 District, Aylsham Union; and registrar of births & deaths for Buxton sub-
 district, Burgh Road.
 Literary Institution; (H.J. Gidney, President; E.D. Browne, Hon Sec.) Market
 Place.
 Little, Frederick M.R.C.S. Eng L.S.A. surgeon; certifying factory surgeon and
 Medical Officer and public vaccinator 4th. district, Aylsham Union, The
 Orchards, Norwich Rd.
 Lomax, Thomas. butcher, Commercial Rd.
 McCreedy, Harcourt Augustus. postmaster, Market Place.
 March, Arthur John. carrier, Commercial Rd.
 Marjoram, Harry Walter. assessor and collector of taxes, deputy registrar of
 marriages, newspaper correspondent, St. Andrews Burgh Rd.
 Martin, Mrs Walter. blacksmith, Millgate St.
 Meale, Harvey. grocer, Millgate St. & baker, White Hart St.
 Miller, A. Boot & shoemaker, Market Place.
 Miller, Thomas. apartments, The Limes, Burgh Rd.
 Morley, Daniel. jobbing gardener, Cawston Rd.
 Morton, Augustus Charles. M.R.C.S. Eng. L.S.A. surgeon and medical officer
 and public vaccinator, 6th. district and Workhouse, Aylsham Union. The
 Beeches. TN2 Aylsham
 Moy, Mrs. George. Boot & shoemaker, Market Place.
 Moy, Jacob. see Tuddenham & Moy
 Neale, George, bricklayer, Cawston Rd.
 Needham, Walter, picture frame maker, White Hart St.
 Nicholls, Arthur. saddler, Millgate St.
 Nicholls, Stanley, butcher, Millgate St.
 Norfolk Shire Horse Society Ltd. (H.F. Proudfoot, sec.) Market Place.
 North Walsham & Aylsham Agricultural Assoc. (H.F. Proudfoot, sec.) Market
 Place.
 Oakley, George James. baker, Cawston Rd.
 Odd Fellows (M.U.I.O.O.F.) Marquis of Lothian Lodge, (R.L. Roe, sec.)
 meets at the Black Boys Hotel.
 Oliver, George. Stone Masons' Arms, P.H. Millgate St.
 Orton, Mrs Sarah Ann, farmer, Stonegate.
 Orton, Sidney, farmer, Stonegate
 Overed, James William. veterinary surgeon, Oakfield Rd.
 Page, Henry, grocer & draper, Market Pl. & Hungate St.
 Partridge, Daniel. butcher and farmer, Red Lion St.
 Pask & Sons, tailors, Red Lion St.
 Payne, Henry. farmer, Woodgate.

Poll & Steward, builders, contractors, wheelwrights, coach painters, undertakers & brick merchants; steam sawing done on reasonable terms, Pound Rd.

Postle, Mrs Mary Ann & Ernest, beer retailers & bakers, Hungate St.

Preston, Leonard J. Highway surveyor to the Rural District Council, Buxton Rd.

Pretty, George, grocer and draper, Red Lion St.

Proudfoot, Harry, assistant overseer and clerk to the parish council, registrar of marriages for Aylsham district; sec. to North Walsham, & Aylsham Agricultural Association and the Norfolk Shire Horse Society Ltd. assistant overseer for Alby-with-Thwaite; Blickling; Brandiston; Cawston; Erpingham; Ingworth; Itteringham; Wickmere & Wolterton. Market Place

Pumphrey, Albert Charles. beer retailer, Dunkirk.

Purdy & Holley, solicitors, Market Place.

Purdy, Thomas Woods, B.A. solicitor & commissioner for oaths (firm Purdy & Holley) clerk to the justices, to the Navigation Commissioners, and to the Commissioners of taxes, Market Place.

Reading Room and Library (H.J. Gidney, president; E.D. Browne, hon. sec.) Market Place.

Reynolds & Chamberlin, Misses. ladies' school, Cawston Road.

Riseborough, Miss Mary Ann, apartments, Commercial Rd.

Roofe, James. grocer, Red Lion St.

Rought, William, gardener, Cawston Rd.

Rout, Frederick Richard. boot & shoe maker, Red Lion St.

Sapwell, Col. Benjamin Beckham. V.D. J.P. landowner and farmer, Sankence, Cawston Road.

Sapwell, Benjamin Beckham, jun. B.A. LL.B M.B. B.C.Cantab. physician and surgeon, The Grange, Cromer Road.

Sayer, William John. insurance agent, Buxton Road.

Shepherd, Philip Candler. J.P. M.R.C.S.Eng. L.S.A. surgeon, Abbot's Hall

Shreeve, Henry H. coal dealer, Millgate St. and Midland & Great Northern station.

Soame, Charles. farmer, the Spa.

Stearman, Miss Sophia. dressmaker, Hungate St.

Stevens, Arth. threshing machine prop. Commercial Road.

Stevens, Richard. threshing machine and traction engine proprietor, Cawston Road.

Steward, Horace Lindley, grocer, Norwich Rd.

Steward, William. builder see Poll & Steward.

Stoner, Edward Thomas. watchmaker & cycle agent, Red Lion St.

Sutton & Co. carriers. (W.R. Larke, agent)

Red Lion St.

Sutton, Hector. farmer, Bure Valley farm,

Burgh Rd.

Sutton, Jesse. farmer, Spratts Green farm,

Burgh Rd.

Swann, Stanley, greengrocer, Hungate St.

Tuddenham & Moy, builders, Commercial Rd.

Tuddenham, Mrs Frances M. butcher,

Cawston Rd.

Tuddenham, Sidney. insurance agent,

Hungate St.

Turner, Benjamin, painter, Hungate St.

Tuttle, Arthur George. fruit grower, Millgate St.

Underwood, Henry William. hairdresser, Red
Lion St.

Vincent, Henry, tailor, White Hart St.

Wade, Harry. cycle agent. Pinfold St.

Wade, Walter, builder, Ellisswicke.

Ward & George, grocers & drapers, Market
Place.

Ward, Edward Albert. carpenter, Red Lion St.

Warne, Charles Henry, farmer, The Spa.

Waters, Frederick Charles. farmer,

The Spa farm.

Weatherbed, James C.R.S.I. inspector of
nuisances to the Rural District Council,
Burgh Rd.

White, Alfd. (Mrs.) saddler & harness maker,
Red Lion St.

Williamson, Alfred, bootmaker, Commercial Rd.

Williamson Herbert James. Ship P.H. White
Hart St.

Winterborn, George. millwright, Cawston Rd.

Winterborn, Mrs Sarah Ann, shopkeeper,
Cawston Rd.

AYLSHAM LOCAL HISTORY SOCIETY
PUBLICATIONS ACCOUNT
INCOME & EXPENDITURE ON PUBLICATIONS
as at 31st. August 2001

Income		Expenditure	
Balance in Giro a/c - B/F	763 - 93	Postages, Publicity etc	33 - 59
Grant from Society	570 - 00	Printing - "Starling"	1305 - 00
Postages rec'd.	12 - 50	" - "Wright's Map"	26 - 00
<u>Sales</u>		" - "Aylsham in 1821"	17 - 03
<i>Six High & Lonely churches</i>	6 - 00	" - "Inns & Pubs"	826 - 00 **
<i>Backwards Glance</i>	10 - 00	Stationery	14 - 43
<i>Journal</i> - [back numbers]	18 - 00		
<i>Postcards</i>	28 - 70		
<i>Wrights Map</i>	14 - 50		
<i>Starling</i>	1579 - 34		
<i>Poor in Aylsham</i>	15 - 94		
<i>Aylsham in 1821</i>	4 - 00		
<i>Inns and Pubs of Aylsham</i>	1194 - 11		
Total	4217 - 02	Total	2222 - 05
		Balances in hand - Giro a/c	1994 - 97
Grand Total	4217 - 02	Grand Total	4217 - 02

NOTES: ** The printing costs for Inns & Pubs of Aylsham (£826) is only one third of the actual printing costs. The remaining two thirds were paid by the author. The amount shown as income for sales of Inns & Pubs (£1194 - 11) plus any subsequent income from sales, will be shared in the same way. In other words - only one third of £1194 - 11 is due to the society so far. - The accounts are healthy, but we are not as well off as the figures might suggest!!

Tom Mollard 31.08.01